

# Four Winds

2008



Class C Motorhome

*FW Four Winds*  
INTERNATIONAL

# *Perfect The Way You Travel*

You can enjoy traveling in exceptional comfort and style in a Four Winds Class C motorhome. With a variety of styles from which to choose, you'll find a model that meets your needs, taste and lifestyle. Once you experience a Four Winds, nothing else quite measures up. In comfort. In quality. And in value.

**INNOVATIVE FLOORPLANS** are available in a selection of single, double and triple slide-out models. A spacious living area offers all the comforts of home. Plus, you'll find plenty of interior and exterior storage space for all of your personal belongings.

**A NEW ENTERTAINMENT** center (lower right) with a 32" LCD television and slide-out bunk is available as an option on Four Winds and Four Winds Kodiak models. Other models feature an optional entertainment center with a 26" LCD television.







JANUS STERLING INTERIOR / CHERRY CABINETRY







*Go Anywhere CONVENIENCE*







**THE KITCHEN** is fully equipped with name brand appliances, including a double door refrigerator, three burner gas range top, microwave oven and double bowl sink. There are plenty of added convenience features to meet your food planning and preparation needs.

**AN EXPANSIVE SOFA/DINETTE** slide-out floorplan dramatically increases your living and dining area. (Pictured top left with Cappuccino interior and Cinnamon Maple cabinetry.)



**INFINISS™ LEATHER JACKKNIFE SOFA** with pedestal table is available as an option on select models. (Pictured middle left with Cappuccino interior and Golden Maple cabinetry.)

**A CONTEMPORARY U-SHAPED DINETTE** with three seatbelts is standard on Model 25C. It also can be converted into a large bed when additional sleeping accommodations are required. (Pictured lower left with optional Infiniss™ Leather dinette seat.)



**THE NEW HIDE-A-BED SOFA** with air mattress is available as an option on select models. (Pictured below with Cypress Green interior and Cinnamon Maple cabinetry.)





# Interior *Decor*

**CAPPUCCINO**



**CYPRESS GREEN**



**JANUS STERLING**



## *The Siesta Difference*

**FOUR WINDS SIESTA** offers a variety of distinctive models with upscale amenities to complement your lifestyle. You'll find comfortable sleeping accommodations and plenty of cabinet storage in the bedroom.

**FULLY EQUIPPED KITCHENS** feature Stainless Steel appliances, laminate countertops and full extension drawer guides. (Pictured lower right with Cappuccino interior and Golden Maple cabinetry.)

**THE FRONT OVERHEAD** features a standard 32" LCD television with remote control. (Pictured far right with Cherry cabinetry.)

**NEWLY DESIGNED CURVED EXTERIOR** sidewalls give the Siesta a sleek, sportier look.



**STANDARD  
GOLDEN  
MAPLE**



**OPTIONAL  
CINNAMON  
MAPLE**



**OPTIONAL  
CHERRY**





*Four Winds  
Siesta*





## Four Winds Kodiak



Standard graphics exterior



Silver Benz graphics/partial paint exterior option

Four Winds Kodiak full-body paint exterior option not shown

## SAFETY FEATURES

A BACK-UP MONITOR is available as an option on all Four Winds motorhomes. (Four Winds Kodiak back-up monitor shown.)

OPTIONAL CHILD'S SAFETY SEAT tether is located behind the cushion on the booth dinette and is available on most models.



## Four Winds



Standard graphics exterior



Silver Benz graphics/partial paint exterior option



## *Four Winds 5000*



Standard graphics exterior



Silver Benz graphics/partial paint exterior option

## *2008 Exterior Options*

Standard graphics exterior

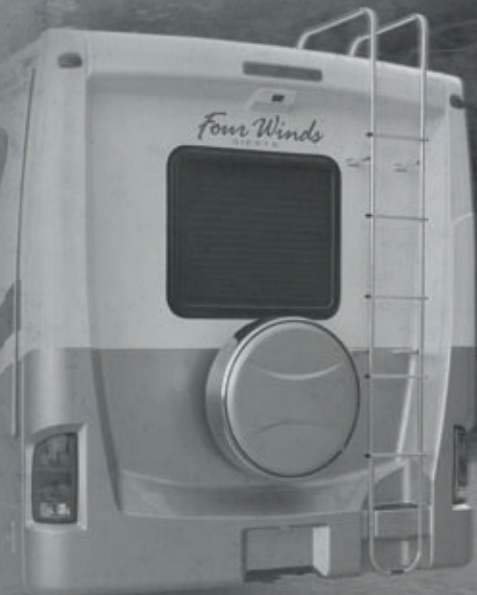


## *Four Winds Siesta*

Silver Benz graphics/  
partial paint exterior  
option



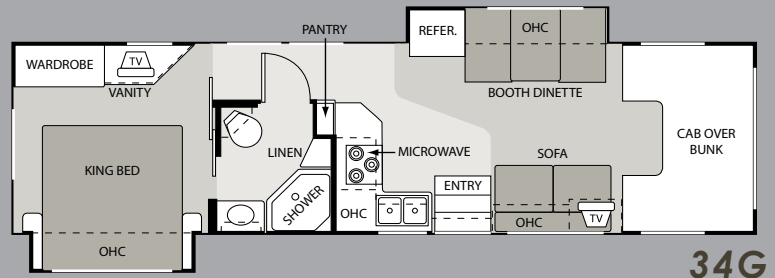
Baja Sand full-body paint exterior option



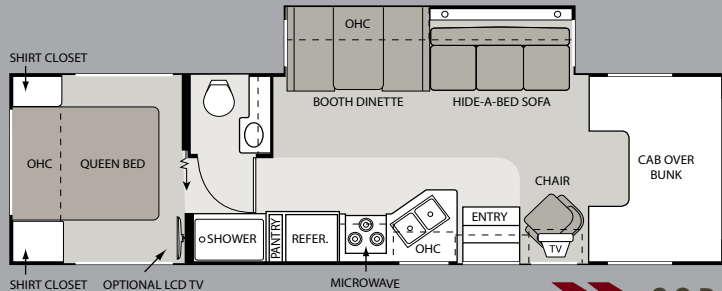


# 2008 Floorplans

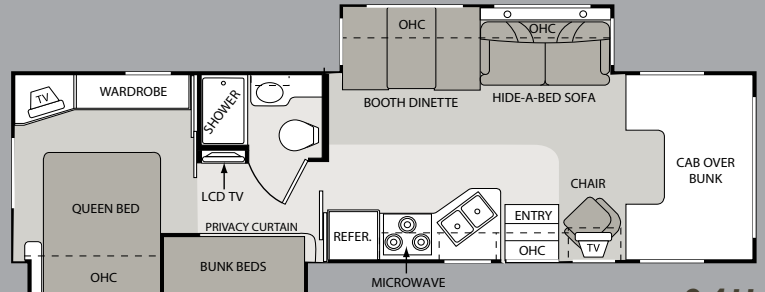
## Four Winds Kodiak



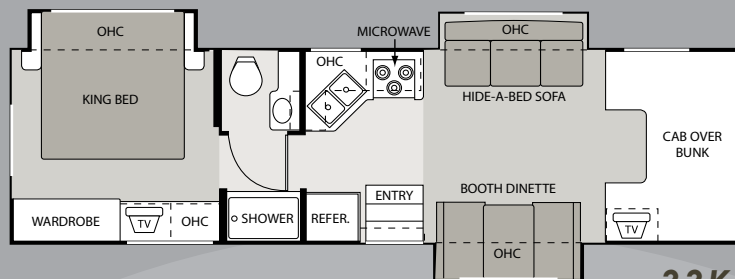
34G



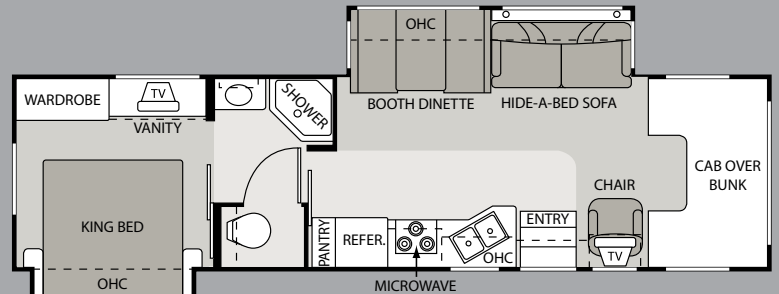
32B



34H



33K



35B

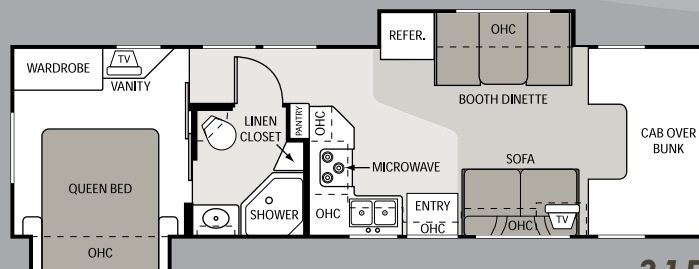
## NEW MEGA STORAGE

This extra-large storage compartment offers more exterior storage than most Class C motorhomes. It has convenient exterior doors for easy access, and features recessed storage bins with lids and a campsite folding table.

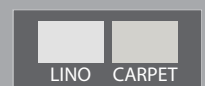


MEGA STORAGE

## Four Winds

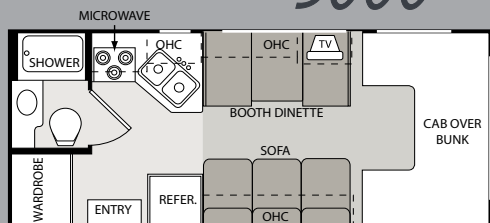


31F

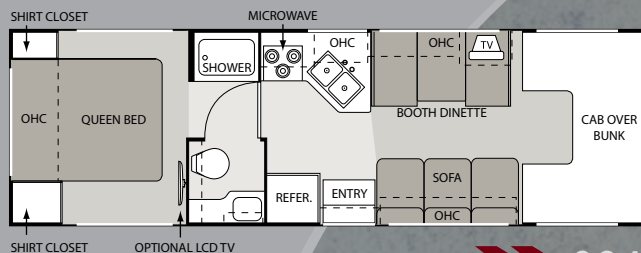




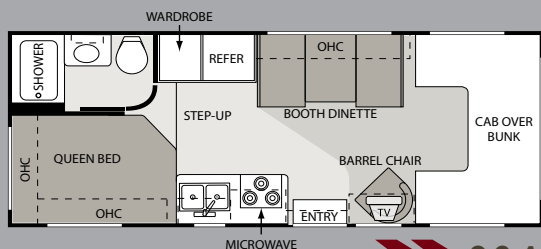
# Four Winds 5000



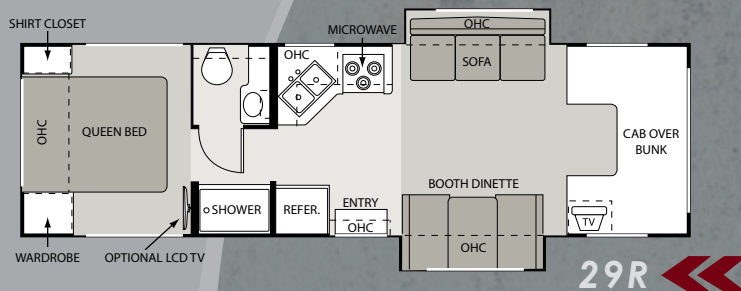
**21RB**



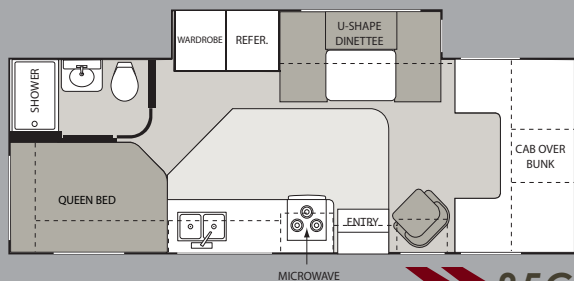
**28A**



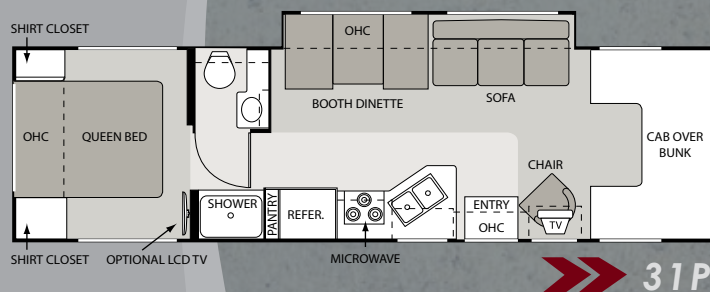
**23A**



**29R**

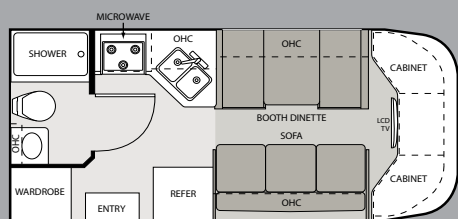


**25C**

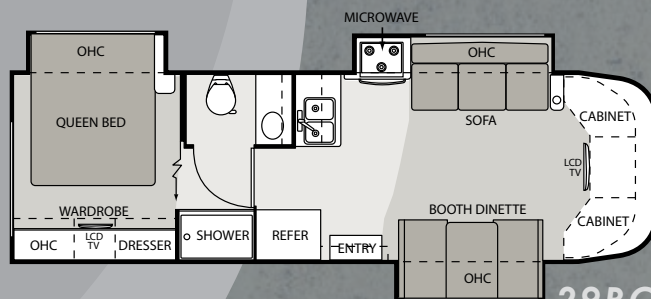


**31P**

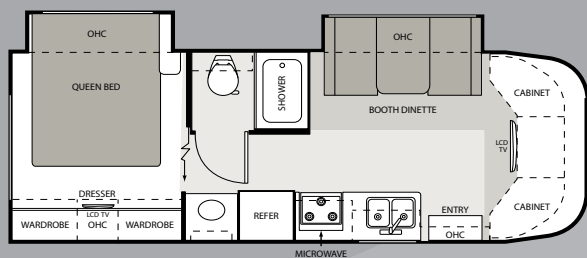
# Four Winds Siesta



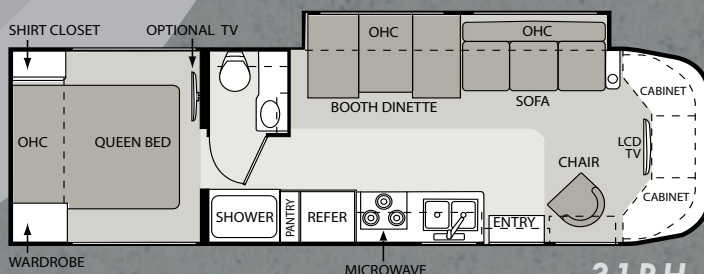
**21BC**



**29BG**



**26BE**



**31BH**



# Four Winds Kodiak

2008 MODELS	32B	33K	34G	34H	35B
CHASSIS/WEIGHT RATING (LBS.)					
<b>Chevy Kodiak Chassis—Vortec Engine</b>	8.1L/V-8	8.1L/V-8	8.1L/V-8	8.1L/V-8	8.1L/V-8
Gross Vehicle (GVWR)	19,500	19,500	19,500	19,500	19,500
Gross Combined (GCWR)	26,000	26,000	26,000	26,000	26,000
MEASUREMENTS					
Wheel Base	213.5"	213.5"	213.5"	241.5"	239"
Exterior Length <i>(without ladder)</i>	33'	33'5"	34'7"	34'7"	35'8"
Exterior Height <i>(with air conditioner)</i>	12'4"	12'4"	12'4"	12'4"	12'4"
Interior Height	84"	84"	84"	84"	84"
Awning Size <i>(Manual/Electric)</i>	16'/16'	15'/15'	16'/16'	12'/10'	16'/16'
CAPACITIES					
Fuel <i>(gallons)</i>	80	80	80	80	80
LPG <i>(pounds)</i>	81.3	81.3	81.3	81.3	81.3
Fresh Water <i>(gallons)</i>	65	65	65	65	65
Waste Water <i>(gallons)</i>	54	54	54	48	44
Gray Water <i>(gallons)</i>	44	44	44	54	54
Water Heater <i>(gallons)</i>	6	6	6	6	6
Furnace <i>(BTUs)</i>	30,000	30,000	30,000	30,000	30,000
Exterior Storage Capacity <i>(cubic feet)</i>	120.2	44.6	70	63.4	71.6

## 2008 Specifications

### Four Winds

2008 MODEL	31F
CHASSIS/WEIGHT RATING (LBS.)	
<b>Ford Chassis—Triton Engine</b>	6.8L/V-10
Gross Vehicle (GVWR)	14,500
Gross Combined (GCWR)	20,000
<b>Chevy Chassis—Vortec Engine</b>	6.0L/V-8
Gross Vehicle (GVWR)	14,050
Gross Combined (GCWR)	17,600
MEASUREMENTS	
Wheel Base—Ford/Chevy	223"/224"
Exterior Length <i>(without ladder)</i>	32'2"
Exterior Height <i>(with air conditioner)</i>	11'6"
Interior Height	80"
Awning Size	16'
CAPACITIES	
Fuel—Ford/Chevy <i>(gallons)</i>	55/57
LPG <i>(pounds)</i>	40.9
Fresh Water <i>(gallons)</i>	33
Waste Water <i>(gallons)</i>	32
Gray Water <i>(gallons)</i>	36
Water Heater <i>(gallons)</i>	6
Furnace <i>(BTUs)</i>	30,000
Exterior Storage Capacity <i>(cubic feet)</i>	26

**VEHICLE LOADING:** Every effort has been made to provide the greatest number of options for the recreation vehicle owner. Along with these choices comes the responsibility to manage the loads that are imposed by the choices so that they remain within the manufacturer's specified chassis weight limits. Do not overload the recreation vehicle.

**IMPORTANT:** Towing capacity may vary by chassis model, floorplan, options and loading of the vehicle. This may result in a towing capacity which is less than the maximum capacity of the hitch. Do not exceed the vehicle's Gross Combined Weight Rating (GCWR), or the hitch rating. A separate functioning brake system is required for any towed vehicle or trailer weighing more than 1,000 lbs. (450 KG) when fully loaded. Liquid capacities and weights are approximations only.

**WARNING:** This information is intended as a guide only. Weights of individual vehicles may vary. Consult your owner's manual and weight sticker affixed to each vehicle for complete loading, weighing, and towing instructions. Actual filled LP capacity is 80% of listing due to safety shut-off required on tank.

**WARRANTY:** This vehicle is provided with a one-year, 15,000-mile limited warranty and a three-year, 45,000-mile limited structural warranty. Chassis, component part and appliance manufacturers issue limited warranties covering those portions of the vehicle not covered by the limited warranties issued by Four Winds International. To learn what portions of the vehicle are excluded from coverage under the limited warranties issued by Four Winds International, please contact your selling dealership or Four Winds International directly, or review the warranty packet inside the vehicle.



# Four Winds 5000

## 2008 MODELS

	21RB	23A	25C	28A	29R	31P
CHASSIS/WEIGHT RATING (LBS.)						
<b>Ford Chassis—Triton Engine</b>	5.4L/V-8	6.8L/V-10	6.8L/V-10	6.8L/V-10	6.8L/V-10	6.8L/V-10
Gross Vehicle (GVWR)	11,500	12,500	14,500	12,500	14,500	14,500
Gross Combined (GCWR)	13,000	18,500	20,000	18,500	20,000	20,000
<b>Ford Chassis—Power Stroke Diesel Engine</b>	N/A	6.0L/V-8	6.0L/V-8	6.0L/V-8	6.0L/V-8	N/A
Gross Vehicle (GVWR)	N/A	14,500	14,500	14,500	14,500	N/A
Gross Vehicle (GVWR)	N/A	20,000	20,000	20,000	20,000	N/A
<b>Chevy Chassis—Vortec Engine</b>	6.0L/V-8	6.0L/V-8	6.0L/V-8	6.0L/V-8	6.0L/V-8	6.0L/V-8
Gross Vehicle (GVWR)	12,300	12,300	14,050	12,300	14,050	14,050
Gross Combined (GCWR)	16,000	16,000	17,600	16,000	17,600	17,600
MEASUREMENTS						
Wheel Base—Ford/Chevy	138"/139"	158"/159"	189"/190"	190"/191"	205"/206"	219"/220"
Exterior Length <i>(without ladder)</i>	22'8"	24'10"	27'4"	29'9"	31'2"	32'3"
Exterior Height <i>(with air conditioner)</i>	10'8"	10'8"	10'8"	10'8"	10'8"	10'8"
Interior Height	80"	80"	80"	80"	80"	80"
Awning Size	12'	15'6"	12'6"	14'	15'	16'
CAPACITIES						
Fuel—Ford/Chevy <i>(gallons)</i>	37/35	55/57	55/57	55/57	55/57	55/57
LPG <i>(pounds)</i>	40.9	40.9	40.9	40.9	40.9	40.9
Fresh Water <i>(gallons)</i>	20.5	40	40	40	40	40
Waste Water <i>(gallons)</i>	25	24.5	24.5	25	22	31
Gray Water <i>(gallons)</i>	22	38.5	38.5	22	23	29
Water Heater <i>(gallons)</i>	6	6	6	6	6	6
Furnace <i>(BTUs)</i>	25,000	25,000	30,000	30,000	30,000	30,000
Exterior Storage Capacity <i>(cubic feet)</i>	6.4	69.5	69.7	111.8	101.2	101.4

# Four Winds Siesta

## 2008 MODELS

	21BC	26BE	29BG	31BH
CHASSIS/WEIGHT RATING (LBS.)				
<b>Ford Chassis—Triton Engine</b>	5.4L/V-8	6.8L/V-10	6.8L/V-10	6.8L/V-10
Gross Vehicle (GVWR)	11,500	14,500	14,500	14,500
Gross Combined (GCWR)	13,000	20,000	20,000	20,000
<b>Ford Chassis—Power Stroke Diesel Engine</b>	N/A	6.0L/V-8	N/A	N/A
Gross Vehicle (GVWR)	N/A	14,500	N/A	N/A
Gross Vehicle (GVWR)	N/A	20,000	N/A	N/A
<b>Chevy Chassis—Vortec Engine</b>	6.0L/V-8	6.0L/V-8	6.0L/V-8	6.0L/V-8
Gross Vehicle (GVWR)	12,300	14,050	14,050	14,050
Gross Combined (GCWR)	16,000	17,600	17,600	17,600
MEASUREMENTS				
Wheel Base—Ford/Chevy	138"/139"	181"/182"	213"/214"	223"/224"
Exterior Length—Ford/Chevy <i>(without ladder)</i>	22'8"/23'7"	27'4"/28'3"	30'11"/31'10"	31'11"/32'10"
Exterior Height <i>(with air conditioner)</i>	10'7"	10'7"	10'7"	10'7"
Interior Height	80"	80"	80"	80"
Awning Size	11'	18'	20'	16'
CAPACITIES				
Fuel—Ford/Chevy <i>(gallons)</i>	37/35	55/57	55/57	55/57
LPG <i>(pounds)</i>	40.9	40.9	40.9	40.9
Fresh Water <i>(gallons)</i>	39	33	33	40
Waste Water <i>(gallons)</i>	26	25	25	22
Gray Water <i>(gallons)</i>	26	33	23	22
Water Heater <i>(gallons)</i>	6	6	6	6
Furnace <i>(BTUs)</i>	25,000	25,000	25,000	25,000
Exterior Storage Capacity—Ford/Chevy <i>(cubic feet)</i>	4.25	16/12.25	24.5	96



# 2008 *Four Winds* STANDARD AND OPTIONAL FEATURES

BODY CONSTRUCTION/ EXTERIOR	KO	FO	FI	SI		KO	FO	FI	SI		KO	FO	FI	SI
Fully welded tubular steel floor system	S	S	S	S	Ford chassis with 5.4-liter Triton V-8 gas engine and Torqshift transmission (21BC and 21RB only)	N/A	N/A	S	S	Air conditioning ductwork molded into roof insulation (not available on 21RB, 23A, 25C and 28A)	S	S	S	S
Fully welded tubular aluminum roof and sidewall cage construction	S	S	S	S	Ford chassis with 6.8-liter Triton V-10 gas engine and Torqshift transmission (not available on 21BC and 21RB)	N/A	S	S	S	Golden Maple cabinetry	S	S	S	S
Vacu-Bond laminated roof, walls and floors with high-density block foam insulation	S	S	S	S	Ford chassis with 6.0-liter power stroke diesel engine and Torqshift transmission with Onan® 3.6 LP generator (3600-KW) (23A, 25C, 26BE, 28A and 29R only)	N/A	N/A	O	O	Cinnamon Maple or Cherry cabinetry	O	O	O	O
Curved sidewall design	N/A	N/A	N/A	S	Chevy chassis with 6.0-liter V-8 gas engine and Hydramatic® transmission	N/A	O	O	O	Raised panel upper cabinet doors	S	S	S	S
Seamless fiberglass exterior sidewalls	S	S	S	N/A	5,000-lb. trailer hitch	N/A	S	S	S	Cabinet doors with hidden hinges	S	S	N/A	S
Slick fiberglass exterior	O	O	O	S	10,000-lb. trailer hitch	S	N/A	N/A	N/A	Hardware with Brushed Nickel finish	S	S	S	S
One-piece fiberglass front and rear caps	N/A	N/A	N/A	S	Oversized AM/FM radio with large buttons and compact disc player	S	S	S	S	Adjustable shelves in overhead galley cabinets (29BG only)	N/A	N/A	N/A	S
Exterior graphics package	S	S	S	S	Back-up monitor	O	O	O	O	Mini-blinds throughout	N/A	N/A	S	N/A
Exterior graphics/partial paint package	O	O	O	O	Power window and door locks	S	S	S	S	Day/night shades throughout	S	S	O	S
Full-body paint package with Gel-coat exterior (not available on 34H and 35B with diesel engine option)	O	N/A	N/A	O	Upgrade dash insert with drink tray	S	S	O	O	Fluorescent ceiling lighting	N/A	N/A	N/A	S
Premium one-piece TPO roof—Energy Star approved	S	S	S	S	Power driver's seat (Ford chassis only)	N/A	O	O	O	Incandescent lights	S	S	S	N/A
Crown roof (not available on 21RB, 23A, 25C and 28A)	S	S	S	S	Infiniss™ Leather driver and passenger captain's chairs	O	O	O	O	Soft Touch vinyl ceiling	S	S	N/A	S
Flat roof (not available on 29R and 31P)	N/A	N/A	S	N/A	Deluxe exterior mirrors	N/A	S	S	S	Barrel chair (23A, 25C, 31BH, 31P, 32B, 34H, 35B only)	S	N/A	S	S
Manual patio awning	S	S	S	S	Heated remote exterior mirrors	S	O	O	O	Leather Euro chair with ottoman in place of barrel chair (23A, 25C, 31BH, 31P, 32B, 34H and 35B only)	O	N/A	O	O
Automatic electric patio awning (not available on 34H with 26" LCD television in outside entertainment center option)	O	N/A	N/A	N/A	Fully automatic hydraulic leveling jacks	S	N/A	N/A	N/A	Fabric recliner (32B, 34H, 35B only)	O	N/A	N/A	N/A
Slide-out room awnings	S	S	S	S	Metal running boards	S	S	S	N/A	Infiniss™ Leather recliner (32B, 34H, 35B only)	O	N/A	N/A	N/A
Roof ladder	S	S	S	S	Fiberglass running boards	N/A	N/A	N/A	S	Fabric jackknife sofa (not available on 26BE, 23A, 25C, 32B, 33K, 34H and 35B)	S	S	S	S
Clear acrylic entry grab handle	S	S	S	S	Hub caps	N/A	N/A	S	N/A	Infiniss™ Leather jackknife sofa (not available on 26BE, 23A, 25C, 32B, 33K, 34H and 35B)	O	O	O	O
Rubber tread entry steps	S	S	S	S	Stainless Steel wheel liners	S	O	N/A	S	Fabric jackknife sofa with pedestal table in place of dinette (21BC with Chevy chassis, 26BE, 29BG, 29R and 31BH only)	N/A	N/A	O	O
Drop-down stairwell entrance step (not available on 21RB)	N/A	N/A	S	N/A	Spare tire (not available on 34H and 35B with diesel option)	O	S	S	O	Infiniss™ Leather jackknife sofa with pedestal table in place of dinette (21BC with Chevy chassis, 26BE, 29BG, 29R and 31BH only)	N/A	N/A	O	O
Manual entrance step (not available on 23A, 25C, 28A, 29R and 31P)	N/A	S	S	S	INTERIOR					Fabric hide-a-bed sofa (29BG, 29R, 32B, 33K, 34H, 35B only)	S	N/A	O	O
Automatic electric entrance step (not available on 23A, 25C, 28A, 29R and 31P)	S	O	O	O	Full 84" interior ceiling height	S	N/A	N/A	N/A	Infiniss™ Leather hide-a-bed sofa (29BG, 29R, 32B, 33K, 34H, 35B only)	O	N/A	O	O
Outside shower	S	O	O	O	Full 80" interior ceiling height	N/A	S	S	S	Infiniss™ Leather hide-a-bed sofa with air mattress (29BG and 31BH with leather Euro recliner and ottoman; 31P with Ford chassis; 29R, 32B, 33K, 34H and 35B only)	O	N/A	O	O
AUTOMOTIVE/COCKPIT					Residential linoleum (galley, bath and entry way)	S	S	S	S	Infiniss™ Leather hide-a-bed sofa with air mattress and pedestal table in place of dinette (26BE only)	N/A	N/A	N/A	O
Chevrolet Kodiak chassis with 8.1-liter Vortec V-8 gas engine and Allison 1000 transmission	S	N/A	N/A	N/A	Metal entry assist grab handle	S	S	S	S	Booth dinette (not available on 25C)	S	S	S	S
Chevrolet Kodiak chassis with 6.6 liter Duramax diesel engine with exhaust brake, Allison 1000 transmission and Onan® RV Marquis Gold 5.5 LP gas generator (5500-KW)	O	N/A	N/A	N/A	Windshield privacy curtain	S	S	S	S					
Chevrolet Kodiak chassis with 6.6-liter Duramax diesel engine with exhaust brake, Allison 1000 transmission and Onan® RV Quiet Diesel 6.0 generator (6000-KW)	O	N/A	N/A	N/A	13,500 BTU roof air conditioner in front	S	S	S	N/A					
					13,500 BTU low-profile roof air conditioner	N/A	N/A	N/A	S					
					15,000 BTU roof air conditioner in front	O	O	O	N/A					
					15,000 BTU low-profile air conditioner	N/A	N/A	N/A	O					
					13,500 BTU rear roof air conditioner (requires 5500-KW generator)	O	N/A	N/A	N/A					

	KO	FO	FI	SI		KO	FO	FI	SI		KO	FO	FI	SI
Fabric U-shaped dinette (25C only)	N/A	N/A	S	N/A	Cable television and satellite prep	S	S	S	S	Three-point seatbelts for the driver and passenger and seatbelts throughout	S	S	S	S
Infiniss™ Leather U-shaped dinette (25C only)	N/A	N/A	○	N/A	Television antenna and booster	S	S	S	S	Driver and passenger air bags	N/A	S	S	S
Fantastic® fan (not available with second air conditioner on 32B)	○	○	○	○	DVD player	N/A	N/A	○	N/A	Child safety seat tether anchor in booth dinette (not available on 25C)	○	○	○	N/A
Fantastic® fan in overhead bunk	○	○	○	N/A	Home theater system with DVD player (requires LCD swing-out television or entertainment center)	○	○	N/A	○	Central vacuum system (requires 50-amp service)	○	N/A	N/A	N/A
Dual pane windows (not available on 34H and 35B with diesel option)	○	N/A	N/A	N/A	Outside entertainment center with compact disc player (not available on 21BC and 21RB)	○	○	○	○	Convenience package includes keyless entry, two-way radios and valve stem extenders	○	○	N/A	○
GALLEY										ELECTRICAL SYSTEMS				
Double door refrigerator	S	S	S	S	Outside entertainment center with 26" LCD television and AM/FM radio with compact disc player and speakers (26BE, 29BG, 31BH, 31P, 32B, 34H and 35B only; not available on 34H with electric awning)	○	N/A	○	○	Guardian RV Quietpact™ 40G generator (3600-KW)	S	S	○	○
Decorative raised wood refrigerator panels	○	○	○	N/A	Satellite dish	○	○	○	○	Onan® RV Microquiet™ 4.0 generator (4000-KW)	○	○	○	○
3-burner high-output gas range top	S	S	S	S	Automatic satellite	N/A	N/A	N/A	○	Guardian RV Quietpact™ 55G generator (5500 watts)	○	N/A	N/A	N/A
Oven	S	S	○	N/A	BEDROOM/BATHROOM					Onan® RV Marquis Gold™ 5.5 generator (5500-KW)	○	N/A	N/A	N/A
Power range hood	S	S	S	S	Queen-size bed with inner spring mattress (not available on 21BC, 21RB, 33K, 34G and 35B)	S	S	S	S	Onan® 3.6 LP generator (3600-KW) with Ford power stroke diesel engine only (23A, 25C, 28A, 26BE and 29R only)	N/A	N/A	○	○
Microwave oven	S	S	S	N/A	King-size bed with inner spring mattress (33K, 34G, 34H and 35B only)	S	N/A	N/A	N/A	Shoreline power cord	S	S	S	S
Stainless Steel convection oven (Black convection oven on Canadian units)	N/A	N/A	N/A	S	Bunk beds in hallway slide room (34H only)	S	N/A	N/A	N/A	Automatic shoreline-to-generator transfer switch	S	○	○	○
Convection microwave oven	○	○	○	N/A	Twin beds with wardrobe (not built with Mega Storage; 28A only)	N/A	N/A	○	N/A	30-amp service	S	S	S	S
Stainless Steel kitchen package includes power range hood, convection microwave oven, range top, sink and refrigerator panels	N/A	N/A	N/A	S	Bedsprad and pillow shams not available on 21BC and 21RB)	S	S	S	S	50-amp service	○	N/A	N/A	N/A
Laminate countertop	S	S	S	S	Vanity with stool (33K and 35B only)	S	N/A	N/A	N/A	6-gallon DSI gas water heater	S	S	S	S
Solid surface countertop	N/A	N/A	N/A	○	Power bath vent	S	S	S	S	6-gallon gas/electric water heater	○	○	○	○
Flip-up countertop extension (not available on 21BC, 21RB, 25C, 28A, 29R and 33K)	S	S	S	S	Skylight in shower	S	S	S	S	Water heater bypass system	S	S	S	S
Large double bowl sink	S	S	S	S	China bowl toilet	S	S	S	S	Battery disconnect switch	S	S	S	S
Full extension metal drawer guides	S	S	S	S	Tub/shower (23A and 25C only)	N/A	N/A	S	N/A	Emergency start switch	S	S	S	S
ENTERTAINMENT & ACCESSORIES					Neo-angled shower with glass door (not available on 32B, 33K and 34H)	S	S	N/A	N/A	600-watt inverter	○	○	N/A	N/A
14" television on swivel tray	○	○	○	N/A	Pleated shower curtain (not available on 23A, 25C, 34G and 35B)	S	N/A	S	S	Second auxiliary house battery	○	○	○	○
32" LCD color television on electric swivel in cab-over	○	N/A	N/A	N/A	Shower curtain with curved curtain rod (23A and 25C only)	N/A	N/A	S	N/A	STORAGE				
26" LCD television on electric swivel in cab-over	N/A	○	○	N/A	Glass shower door (not available on 34G and 35B)	○	N/A	○	○	Exterior rear Mega Storage compartment (23A, 25C, 28A, 29R, 31BH, 31P and 32B only)	S	N/A	S	S
Entertainment center with 26" LCD television and slide-out bunk	N/A	N/A	○	N/A	SAFETY/CONVENIENCE					Seamless roto-cast storage compartments	S	S	S	S
Entertainment center with 32" LCD color television and slide-out bunk (slide-out bunk not available on Siesta)	○	○	N/A	S	Entry door with deadbolt lock	S	S	S	S	Flush mount radius luggage doors	S	S	S	S
19" LCD television in hallway for bunk beds (34H only)	S	N/A	N/A	N/A	Telephone jack	S	S	S	S	Heated and enclosed roto-cast holding tanks for full-height storage compartments	S	S	N/A	N/A
14" television in bedroom	N/A	S	N/A	N/A	Systems Control Center	S	S	N/A	S	Holding tanks with heat pads	N/A	N/A	○	○
Portable 19" LCD television in bedroom—can be removed and mounted to exterior hook-ups (26BE, 28A, 29BG, 29R, 31BH, 31P and 32B only)	○	N/A	○	○	Smoke, LPG and carbon monoxide detectors	S	S	S	S	KEY				
20" television in bedroom (33K, 34G, 34H and 35D only)	S	N/A	N/A	N/A	Fire extinguisher	S	S	S	S	KO: Four Winds Kodiak    FI: Four Winds 5000 FO: Four Winds                      SI: Four Winds Siesta				



## THE FOUR WINDS INTERNATIONAL QUALITY DIFFERENCE

What sets Four Winds International apart from other manufacturers? It's a better level of quality built in each motorhome from the inside out. It's exceptional value that is integrated into each design. It's a dedication to innovation that allows us to continually improve our motorhomes. Our ultimate goal is to build the right combination of safety, functionality and reliability so you get many years of enjoyment from your new motorhome. It's a commitment we take seriously, and one on which you can depend.

### THE DIFFERENCE IS CLEAR

At Four Winds International (FWI), we strive to go beyond your expectations with every motorhome we build. By doing so, you will experience a better quality of life while on the road.

Our nationwide dealer network is fully equipped and trained to meet your service needs. The FWI support staff has many years of experience, and is available to provide assistance on all technical, service and warranty issues. For complete warranty details, contact your Four Winds International dealer.

FWI is proud to offer high-quality products and support services that result in customer satisfaction—one customer at a time. So whether you are a first-time recreational vehicle owner, or an experienced one, we're confident that you'll enjoy many years of adventures in your new motorhome. This is the Four Winds International difference.

### WHY THOR IS YOUR BEST RV VALUE

Thor Industries, Inc., listed on the New York Stock Exchange (THO), proudly traces its history back over 70 years to the pioneering days of the recreational vehicle industry with the founding of Airstream, the industry's oldest and most renowned brand. Our total commitment to quality and our philosophy of putting our customers first has led to our continuous growth.

Today, Thor is the largest builder of recreational vehicles. Thor's strong financial condition and years of solid growth are your assurance that we will be here to serve you for years to come. We think this extra peace of mind is important when you are



[www.FOURWINDS-RV.com](http://www.FOURWINDS-RV.com)

making a significant investment. Because our customers are always #1 with us, we work harder than other manufacturers to satisfy you.

Product information, specifications, and photography in this brochure were as accurate as possible at time of printing. Photographs may contain some features that are optional on your vehicle. Since we continually strive to improve our products, actual products may differ. The manufacturer reserves the right, at any time, to make changes in product design, materials, component specifications and pricing, without notice. All capacities are approximate and dimensions are nominal. Some features or options may be different or unavailable in Canada.



*FW*  
*Four Winds*  
INTERNATIONAL



P.O. Box 1486 Elkhart, Indiana 46515-1486  
Phone: 574-266-1111 Fax: 574-294-8971

© 2007 Four Winds International  
Litho USA 1107-45M