

CONNECT

LIGHTWEIGHT TRAVEL TRAILERS





C201QB | Seal décor

CONNECT LITE

Skimping on comfort and convenience to achieve lighter weight was simply not an option when we designed the Connect Lite. Efficient use of space, coupled with a narrower body design and smaller floorplans in the 19- to 23-foot class, make the Connect Lite the perfect entry-level travel trailer, towable by small crossover vehicles.



C201QB | Seal décor



C201QB | Seal décor

Style is the defining feature in the Connect Lite. Efficiently designed kitchens include large-size stainless steel appliances and deep under-mount sinks, along with plenty of kitchen storage, that make family cooking hassle-free. The handsomely upholstered sofa converts to extra sleeping space.



C201QB | Seal décor



C201QB | Seal décor

CONNECT

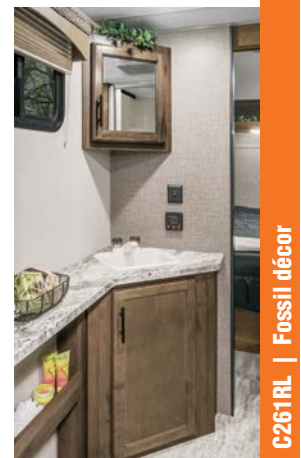
Wonderfully livable, Connect offers style and flexibility to meet every family's needs and desires. Even the most finicky gourmet will appreciate the stylish, well-planned kitchens with homelike, full-size, stainless steel appliances and rich handcrafted maple cabinetry along with gracious dining options. A cozy optional electric fireplace adds charming ambience. Shown below with the optional 10 CU FT 12V refrigerator.

C261RB | Seal décor



When inclement weather keeps you inside, relax with the multi-media entertainment center that includes Bluetooth technology, DVD player, and NFC wireless connectivity.

Enjoy your favorite movies from the comfort of the optional theater seating, complete with center console and cup holders. The 12-volt dual USB ports keep your devices charged and connected.



The comfortable queen size bed invites a good night's rest while overhead lights let you enjoy a relaxing book before sleep. A large under-bed storage area provides extra room to store bedding or additional gear.

When you have a family to feed or dinner guests, this large U-shape dinette is the perfect accommodation for comfortable dining. This model also accommodates your personal needs with a spacious walk-through master bath.

C261RL | Fossil décor

C261RL | Fossil décor

CONNECT LITE

ultra lightweight travel trailers



Standards

- 3/8" Fully Walk-On Roof Decking
- 1-Piece Seamless Roof w/Super Flex® Roofing Material
- Diamond Plate Front Rock Guard
- Tinted Safety Glass Windows
- Double Step
- Radius Baggage Doors w/ Magnetic Catches
- LED Light in Pass-Thru Storage
- LED Exterior Lighting
- (4) Stabilizer Jacks
- (2) 20# LP Bottles w/Bottle Cover
- Bumper w/Sewer Hose Storage
- Black Tank Flush
- Exterior Shower
- Satellite & Cable Hookups
- 3-Burner Range w/Oven
- Microwave
- Solid Wood Mortise & Tenon Cabinet Doors
- Glazed Amish-Crafted Cabinet Doors
- Roller Ball Bearing Drawer Glides
- Linoleum Throughout
- LED Interior Lighting
- Monitor Panel
- Hard Valances
- Nightshades
- Skylight in Kitchen & Bathroom
- Power Vent in Bathroom
- Mattress w/Reversible Down Comforter

Options

- Murphy Bed w/Sofa (patent pending) (190RB, 201RB, 211BH)
- Pillowtop Mattress
- Bedroom LED TV w/Inside/Outside Bracket (N/A EXP's, 190RB, 201RB, 201QB)
- 39" LED TV (211RBK)
- 24" LED TV (N/A 211RBK)
- 15,000 BTU A/C IPO 13,500 BTU A/C

- Bumper-Mount Grill (N/A 191RBT)
- Climate Package (heated, enclosed & insulated underbelly)
- Wireless Backup Camera System – Observation
- Sink Cover
- Motion Security Sensor for Smart Arm Awning
- Wind Sensor for Smart Arm Awning

K-Z Advantage Package (mandatory option)

Exterior

- 5/8" Tongue & Groove Plywood Floor
- Friction-Hinged Entry Door
- Power Front Jack
- Power Awning w/LED Light Strip
- Key Alike Program for Baggage & Entry Doors
- Large Folding Grab Handle
- Exterior Speakers
- Spare Tire & Carrier
- Amber Step Light
- Solar Prep
- Backup Camera Prep
- EquaFlex® Suspension
- Nitrogen-Filled Tires
- Battery Disconnect

Interior

- Jackknife w/Middle Console & Bolster Arms
- 12V Dual USB Ports in Living Room
- Bed Storage System
- Seamless Countertops w/Under-Mount Sink
- Plywood Bed Base w/Gas Struts
- 12V USB Port in Bunk Area
- (2) 6 1/2" Interior Speakers
- Multi-Media Stereo w/Bluetooth, DVD & NFC Wireless Connectivity
- Foot-Flush Toilet
- (2) LED Motion Sensor Lights
- Blue LED Light Strip in Main Slideout Room

K-Z Convenience Package (mandatory option)

Exterior

- Aluminum Wheels
- Smart Arm Awning w/Exterior Controls
- Alumitread® Entry Steps
- Omnidirectional HDTV Antenna
- LED Lights in Exterior Speakers

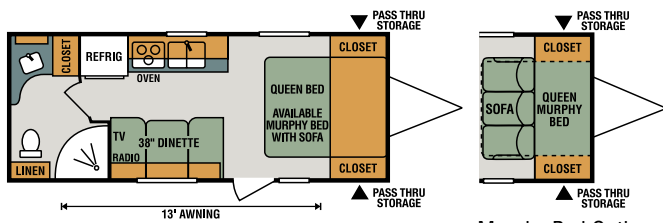
Interior

- Armstrong® ToughGuard® Linoleum
- 8 CU FT Gas/Electric Stainless Steel Refrigerator
- Stainless Steel Microwave & Oven
- Stainless Steel Residential Kitchen Faucet
- Interior Control Switches on OH End Cabinet
- Accent Trim on Corners/entry Doors
- Porcelain Toilet w/Foot Flush

Premium Package (N/A EXP's)

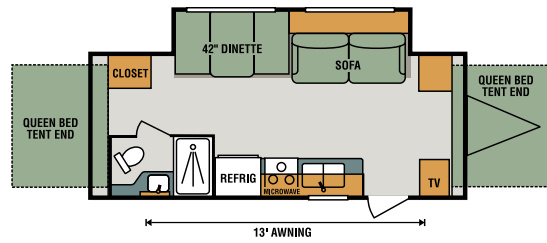
- Fiberglass Front Cap
- Pillowtop Mattress
- Headboard



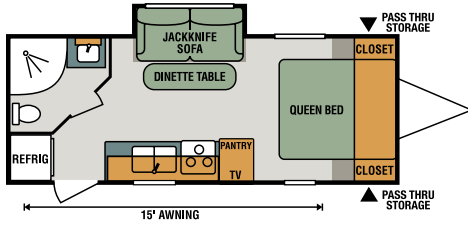


C190RB

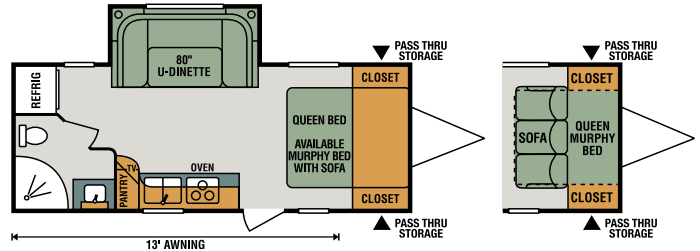
Murphy Bed Option
(patent pending)



C191RBT

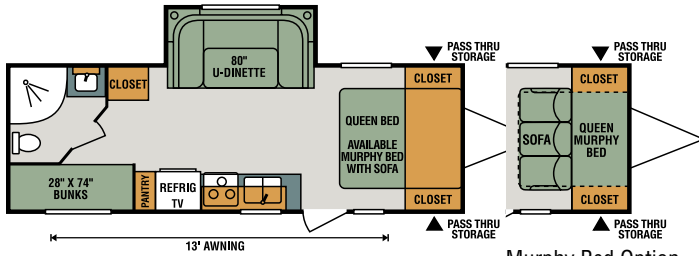


C201QB **NEW**



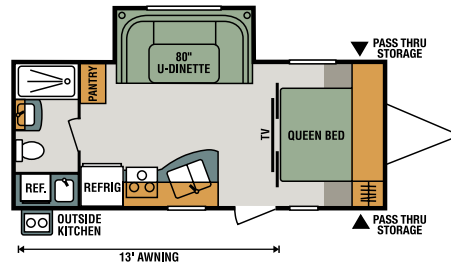
C201RB

Murphy Bed Option
(patent pending)

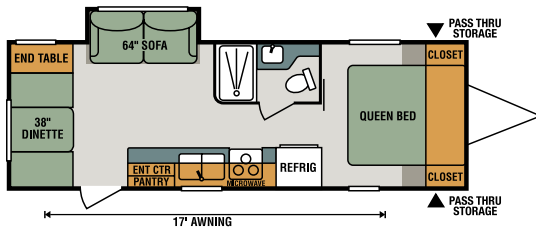


C211BH

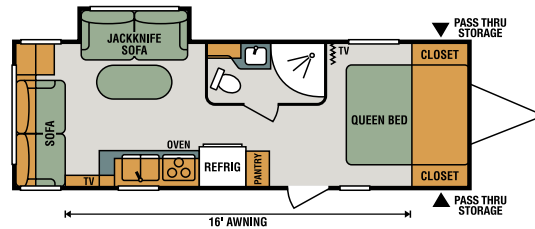
Murphy Bed Option
(patent pending)



C211RBK



C221RD



C231RL

Ultra Lightweight Travel Trailers	C190RB	C191RBT	C201QB	C201RB	C211BH	C211RBK	C221RD	C231RL
UVW (Unloaded Vehicle Weight)*	3,650	4,790	3,988	4,010	4,530	4,700	4,380	4,440
Dry Hitch Weight*	350	670	385	350	560	490	510	470
Dry Axle Weight*	3,300	4,120	3,603	3,660	3,970	4,210	3,870	3,970
NCC (Net Carrying Capacity)	1,550	1,210	1,212	1,190	1,070	1,300	1,220	1,160
GVWR	5,200	5,600	5,200	5,200	5,600	5,600	5,600	5,600
Interior Height	78"	78"	78"	78"	78"	78"	78"	78"
Exterior Height w/ A/C	124"	124"	124"	124"	124"	124"	124"	124"
Exterior Width	90"	90"	90"	90"	90"	90"	90"	90"
Exterior Length	23' 1"	23' 7"	23' 7"	23' 10"	26' 9"	24' 9"	26' 11"	26' 11"
Refrigerator (cu. feet)	8	8	8	8	8	8	8	8
Water Heater Cap. (gal. G/E w/DSI)	6	6	6	6	6	6	6	6
Fresh Water Cap. (gal.)	40	40	40	40	40	40	40	40
Waste Water Cap. (gal.)	30	32	24	24	24	32	30	24
Gray Water Cap. (gal.)	30	32	30	30	30	32	30	30
LP Gas Cap. (lbs.)	40	40	40	40	40	40	40	40
Furnace BTUs (1,000s)	20	20	20	20	20	20	20	20
Tire Size	14"	14"	14"	14"	14"	14"	14"	14"
Awning	13'	13'	15'	13'	13'	13'	17'	16'

*This weight reflects the rolling average unit weight for each model. Your trailer weight will vary according to optional equipment.

CONNECT

lightweight travel trailers



Standards

- 3/8" Fully Walk-On Roof Decking
- 1-Piece Seamless Roof w/SuperFlex® Roofing Material
- UVA & UVB Resistant Gelcoat Lamilux® Exterior F/G
- Protective Front Diamond Plate
- Extra-Large Baggage Doors w/Magnetic Catches
- K-Z Easy-Catch Baggage Door Systems
- LED Exterior Lighting
- Outside Entertainment Prep (EXT 110V & cable outlets)
- Outside Shower
- (4) Stabilizer Jacks
- (2) 20# LP Bottles w/Bottle Cover
- Satellite & Cable Hookups
- 30 AMP Service
- 13,500 BTU A/C
- Water Heater Bypass
- Black Flush Tank
- Digital TV Antenna w/Booster
- 3-Burner Range w/Oven
- High-Rise Faucet
- Rich Woodbridge Maple Cabinetry
- Hand-Crafted Mortise & Tenon Glazed Cabinet Doors
- Roller Ball Bearing Drawer Glides
- Linoleum Throughout
- LED Interior Lighting
- Nightshades
- Shower Surround
- Skylight over Tub
- Roof Vent in Bath
- High Thread Count Quilted Reversible Queen Bedspread
- Gas Struts on Bed Base

Options

- Roof Ladder
- Pillowtop Mattress
- Tri-Fold HAB Sofa (N/A C221RK, C251RK)
- 50 AMP Service for 2nd A/C
- 15,000 BTU A/C IPO 13,500 BTU

- 2nd A/C -13,500 BTU
- Freestanding Dinette Table & (4) Chairs IPO Dinette (N/A C221RK, C241BHK, C251RK)
- Theater Seating IPO Jackknife Sofa (C241RLK, C261RB, C261RL)
- Bumper Mount Grill
- MaxAir® Vent Fan (bathroom only)
- 39" LED TV (N/A C221RK)
- 32" LED TV (C221RK)
- Bedroom LED TV w/Inside/Outside TV Bracket
- Front & Rear Electric Stabilizer Jacks
- Trundle Bed IPO Dinette in Bunk Slide (C312BHK)
- 10 CU FT Stainless Steel 12VRefrigerator IPO 8 CU FT Gas/Electric Refrigerator
- Wireless Backup Camera System – Observation
- Radiant Technology Package (foil in floor, roof, front & rear)
- Fireplace (N/A C221RK, C241BHK, C251RK, C281RL)
- Motion Security Sensor for Smart Arm Awning
- Wind Sensor for Smart Arm Awning

Platinum Package

- Fiberglass Front Cap
- Pillowtop Mattress
- Headboard

K-Z Advantage Package (mandatory option)

Exterior

- 5/8" Tongue & Groove Plywood Floor
- Friction-Hinged Entry Door
- Power Front Jack
- Alumitread® Entry Steps
- Power Awning w/LED Light Strip
- Key Alike Program for Baggage & Entry Doors
- Large Folding Grab Handle
- Exterior Speakers
- Spare Tire
- Amber Step Light
- Toylok
- Solar Prep
- Backup Camera Prep

- Flip-Down 71" Storage Rack
- Equa-Flex Suspension
- Nitrogen-Filled Tires
- Battery Disconnect
- Climate Package (heated, enclosed & insulated underbelly)

Interior

- Jackknife Sofa w/Middle Console & Bolster Arms
- Bed Storage System
- 12V Dual USB Ports in Living Room
- Seamless Countertops w/Under-Mount Kitchen Sink
- Sink Covers
- Plywood Bed Base w/Gas Struts
- 12V Dual USB Ports in Bunk Area
- (2) 6 ½" Interior Speakers
- Multi-Media Stereo w/Bluetooth, DVD & NFC Wireless Connectivity
- Foot-Flush Toilet
- (2) LED Motion Sensor Lights
- Drop-In Cooktop w/Glass Cover
- 60" x 80" Queen Mattress
- Storage Bins under Dinette
- Kitchen Skylight
- Blue LED Light Strip above Slideout (main LR only)

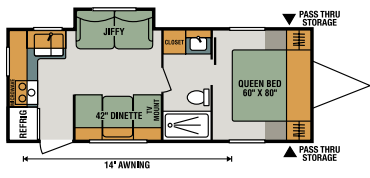
K-Z Convenience Package (mandatory option)

Exterior

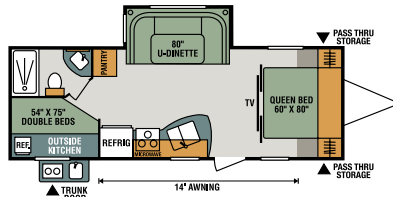
- Aluminum wheels
- Smart Arm Awning w/Exterior Controls
- Omnidirectional HDTV Antenna
- LED lights in Exterior Speakers

Interior

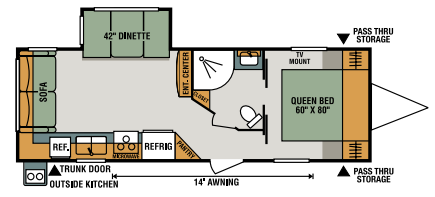
- Armstrong® ToughGuard® Linoleum
- 8 CU FT Gas/Electric Stainless Steel Refrigerator
- Stainless Steel Microwave & Oven
- Stainless Steel Residential Kitchen Faucet w/Pull-down Sprayer
- Interior Control Switches on OH End Cabinet
- Accent Trim on Corners/Entry Doors
- Porcelain Toilet w/Foot Flush



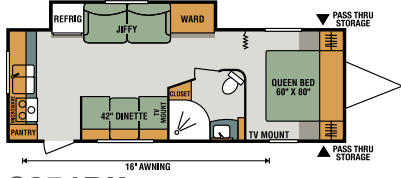
C221RK



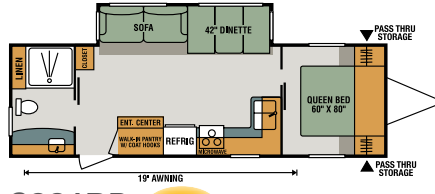
C241BHK



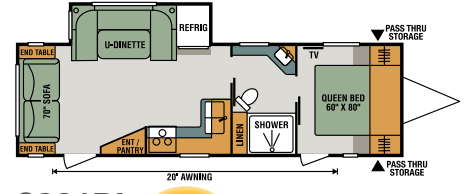
C241RLK



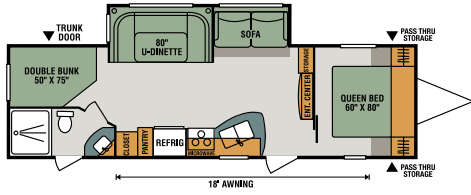
C251RK



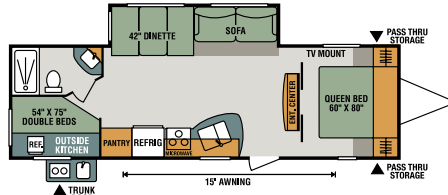
C261RB **NEW**



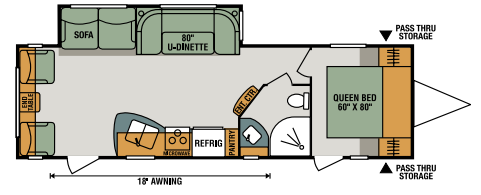
C261RL **NEW**



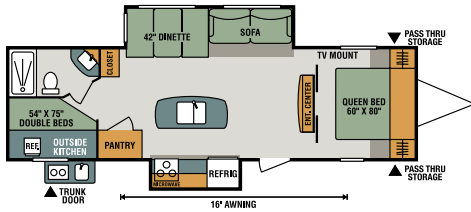
C281BH



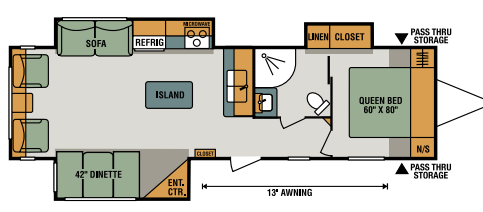
C281BHK



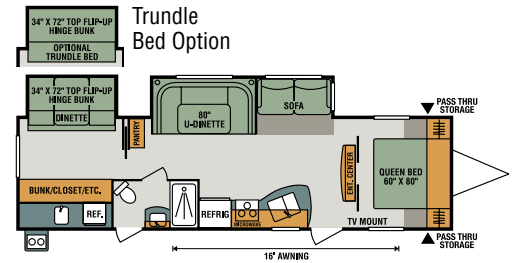
C281RL



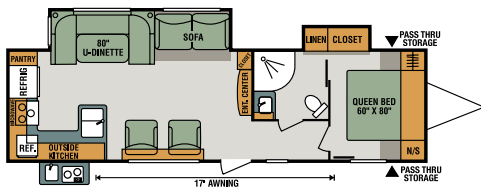
C292BHK



C303RL



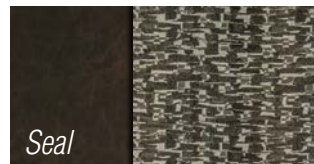
C312BHK



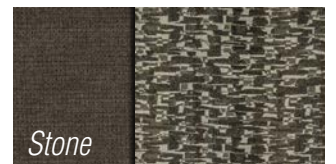
C312RKK



Fossil



Seal



Stone

Lightweight Travel Trailers	C221RK	C241BHK	C241RLK	C251RK	C261RB	C261RL	C281BH	C281BHK	C281RL	C292BHK	C303RL	C312BHK	C312RKK
UVW (Unloaded Vehicle Weight) *	4,490	5,120	5,310	5,180	5,880	5,790	6,170	5,680	6,150	6,540	7,290	6,910	6,770
Dry Hitch Weight*	510	690	560	490	675	605	730	750	660	800	780	730	700
Dry Axle Weight*	3,980	4,430	4,750	4,690	5,205	5,185	5,440	4,930	5,490	5,740	6,510	6,180	6,070
NCC (Net Carrying Capacity)	1,510	1,680	1,190	1,620	920	1,010	1,830	1,120	1,850	1,460	1,010	1,390	1,530
GVWR	6,000	6,800	6,500	6,800	6,800	6,800	8,000	6,800	8,000	8,000	8,300	8,300	8,300
Interior Height	78"	78"	78"	78"	78"	78"	78"	78"	78"	78"	78"	78"	78"
Exterior Height w/ A/C	10' 3"	10' 7"	10' 8"	10' 8"	10' 8"	10' 8"	10' 8"	10' 9"	11' 1"	11' 1"	10' 8"	10' 11"	11' 2"
Exterior Width	96"	96"	96"	96"	96"	96"	96"	96"	96"	96"	96"	96"	96"
Exterior Length	26' 8"	29' 1"	29' 8"	29' 9"	30' 9"	31' 2"	33' 11"	32' 7"	32' 6"	33' 10"	35'	36'	35' 5"
Refrigerator (cu. feet)	8	8	8	8	8	8	8	8	8	8	8	8	8
Water Heater Cap. (gal. G/E w/DSI)	6	6	6	6	6	6	6	6	6	6	6	6	6
Fresh Water Cap. (gal.)	40	40	40	40	40	40	40	40	40	40	40	40	40
Waste Water Cap. (gal.)	32	32	32	32	32	32	32	32	32	32	32	32	32
Gray Water Cap. (gal.)	32	32	32	64	64	32	32	32	32	32	32	32	64
LP Gas Cap. (lbs.)	40	40	40	40	40	40	40	40	40	40	40	40	40
Furnace BTUs (1,000s)	30	30	30	30	30	30	30	30	30	30	30	30	30
Tire Size	14"	14"	14"	14"	14"	14"	15"	14"	15"	15"	15"	15"	15"
Awning	14'	14'	14'	16'	19'	20'	18'	15'	18'	16'	13'	16'	17'

*This weight reflects the rolling average unit weight for each model. Your trailer weight will vary according to optional equipment.

EXTERIOR FEATURES



Fiberglass front cap is the main feature of the Premium and Platinum Packages!



Floorplans with exterior cook stations are convenient, and allow your family to enjoy the ambience of outdoor cooking without the mess of campfire prep and cleanup.



Our key-alike entry system offers not only the convenience of one lock for all applications, but security as well. Now, other campers with standard industry keys can't open your storage compartments or entry doors!



Rear storage system offers additional trip storage for firewood, bikes and anything you don't care to store in your unit, and is rated for up to 150 pounds (Connect only).



Sleek, Euro-style steps feature strong steel linkage and anti-slip grooves. Aluminum steps resist rust and ensure long-lasting durability.



ToyLok® is included in the K-Z Advantage Package (Connect only).



Exterior storage areas are sizable and easy to clean, and include extra-large radius doors with magnetic catches.



The EquaFlex rubberized equalizer absorbs road shock and reduces fore-to-aft movement.



True 2-Year Limited Warranty! K-Z's 24-month hitch-to-bumper limited warranty umbrella is the best 2-year warranty in the business, covering more than 1,500 operations codes for a full two years, and protects your investment while you enjoy your new RV.



Dealer:



985 N 900 W • Shipshewana, IN 46565
E-mail kz@kz-rv.com • www.kz-rv.com

Due to continual research and advances, manufacturer reserves the right to change specifications, design, price and equipment without notice, and assumes no responsibility for any error in this literature. Some items shown are not included as standard or optional equipment. ©2018KZ | 02/01/18 | 30M