

# CONNECT

## Lightweight Travel Trailers

### 2018 Décor



Fossil



Seal



Stone

### Standards

- 3/8" Fully Walk-On Roof Decking
- 1-Piece Seamless Roof w/SuperFlex® Roofing Material
- UVA & UVB Resistant Gelcoat Lamilux® Exterior F/G
- Protective Front Diamond Plate
- Extra-Large Baggage Doors w/Magnetic Catches
- K-Z Easy-Catch Baggage Door Systems
- LED Exterior Lighting
- Outside Entertainment Prep (EXT 110V & cable outlets)
- Outside Shower
- (4) Stabilizer Jacks
- (2) 20# LP Bottles w/Bottle Cover
- Satellite & Cable Hookups
- 30 AMP Service
- 13,500 BTU A/C
- Water Heater Bypass
- Black Flush Tank
- Digital TV Antenna w/Booster
- 3-Burner Range w/Oven
- High-Rise Faucet
- Rich Woodbridge Maple Cabinetry
- Hand-Crafted Mortise & Tenon Glazed Cabinet Doors
- Roller Ball Bearing Drawer Glides
- Linoleum Throughout
- LED Interior Lighting
- Nightshades
- Shower Surround
- Skylight over Tub
- Roof Vent in Bath
- High Thread Count Quilted Reversible Queen Bedspread
- Gas Struts on Bed Base

### Options

- Roof Ladder
- Pillowtop Mattress
- Tri-Fold HAB Sofa (N/A C221RK, C251RK)
- 50 AMP Service for 2nd A/C
- 15,000 BTU A/C IPO 13,500 BTU

- 2nd A/C -13,500 BTU
- Freestanding Dinette Table & (4) Chairs IPO Dinette (N/A C221RK, C241BHK, C251RK)
- Theater Seating IPO Jackknife Sofa (C241RLK, C261RB, C261RL)
- Bumper Mount Grill
- MaxAir® Vent Fan (bathroom only)
- 39" LED TV (N/A C221RK)
- 32" LED TV (C221RK)
- Bedroom LED TV w/Inside/Outside TV Bracket
- Front & Rear Electric Stabilizer Jacks
- Trundle Bed IPO Dinette in Bunk Slide (C312BHK)
- 10 CU FT Stainless Steel Refrigerator IPO 8 CU FT Gas/Electric Refrigerator
- Wireless Backup Camera System – Observation
- Radiant Technology Package (foil in floor, roof, front & rear)
- Fireplace (N/A C221RK, C241BHK, C251RK, C281RL)
- Motion Security Sensor for Smart Arm Awning
- Wind Sensor for Smart Arm Awning

### Platinum Package

- Fiberglass Front Cap
- Pillowtop Mattress
- Headboard

### K-Z Advantage Package (mandatory option)

#### Exterior

- Friction-Hinged Entry Door
- Power Front Jack
- Alumitread® Entry Steps
- Power Awning w/LED Light Strip
- Key Alike Program for Baggage & Entry Doors
- Large Folding Grab Handle
- Exterior Speakers
- Spare Tire
- Amber Step Light
- Toylok
- Solar Prep
- Backup Camera Prep
- Flip-Down 71" Storage Rack

- Equa-Flex Suspension
- Nitrogen-Filled Tires
- Battery Disconnect
- Climate Package (heated, enclosed & insulated underbelly)

#### Interior

- Jackknife Sofa w/Middle Console & Bolster Arms
- Bed Storage System
- 12V Dual USB Ports in Living Room
- Seamless Countertops w/Under-Mount Kitchen Sink
- Sink Covers
- Plywood Bed Base w/Gas Struts
- 12V Dual USB Ports in Bunk Area
- (2) 6 ½" Interior Speakers
- Multi-Media Stereo w/Bluetooth, DVD & NFC Wireless Connectivity
- Foot-Flush Toilet
- (2) LED Motion Sensor Lights
- Drop-In Cooktop w/Glass Cover
- 60" x 80" Queen Mattress
- Storage Bins under Dinette
- Kitchen Skylight
- Blue LED Light Strip above Slideout (main LR only)

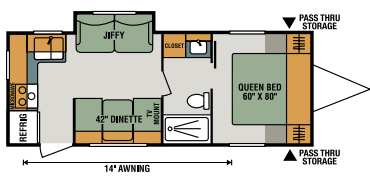
### K-Z Convenience Package (mandatory option)

#### Exterior

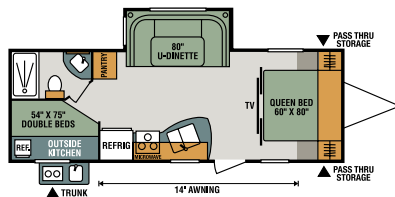
- Aluminum wheels
- Smart Arm Awning w/Exterior Controls
- Omnidirectional HDTV Antenna
- LED lights in Exterior Speakers

#### Interior

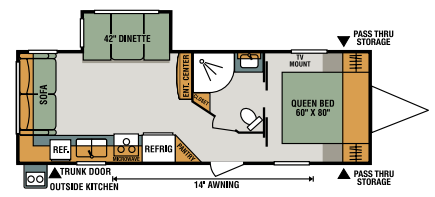
- Armstrong® ToughGuard® Linoleum
- 8 CU FT Gas/Electric Stainless Steel Refrigerator
- Stainless Steel Microwave & Oven
- Stainless Steel Residential Kitchen Faucet w/Pull-down Sprayer
- Interior Control Switches on OH End Cabinet
- Accent Trim on Corners/Entry Doors
- Porcelain Toilet w/Foot Flush



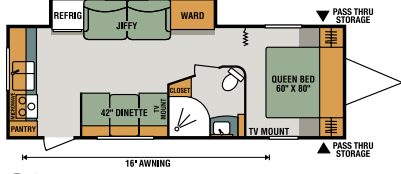
**C221RK**



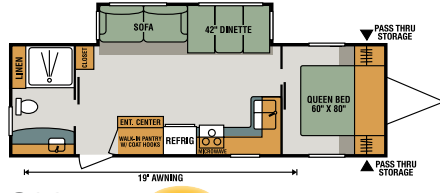
**C241BHK**



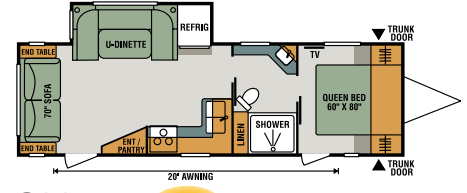
**C241RLK**



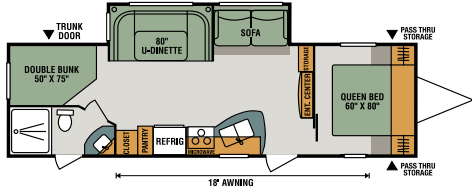
**C251RK**



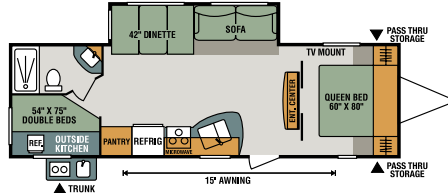
**C261RB** **NEW**



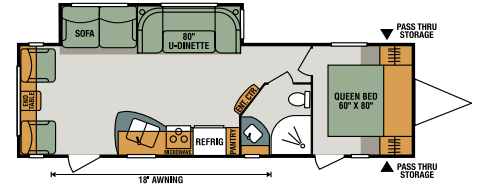
**C261RL** **NEW**



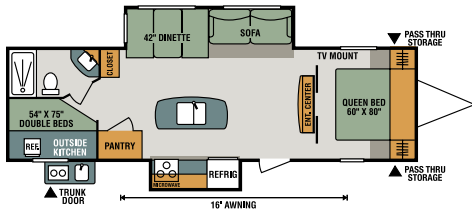
**C281BH**



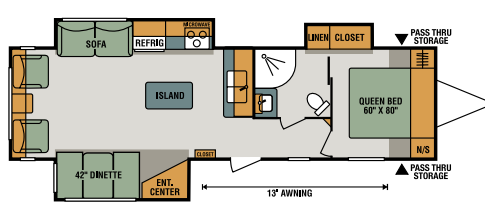
**C281BHK**



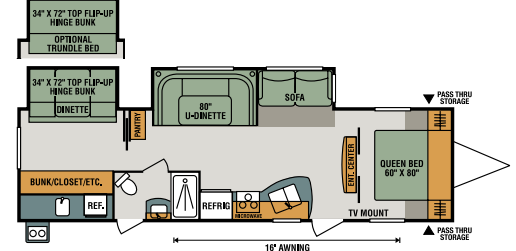
**C281RL**



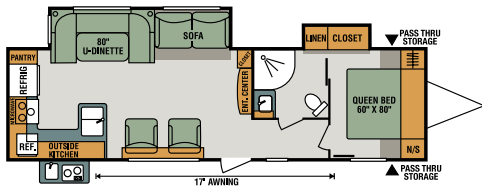
**C292BHK**



**C303RL**



**C312BHK**



**C312RKK**

**Lightweight Travel Trailers**

	C221RK	C241BHK	C241RLK	C251RK	C261RB	C261RL	C281BH	C281BHK	C281RL	C292BHK	C303RL	C312BHK	C312RKK
UVW (Unloaded Vehicle Weight)*	4,490	5,120	5,310	5,180	5,880	5,790	6,170	5,680	6,150	6,540	7,290	6,910	6,770
Dry Hitch Weight*	510	690	560	490	675	605	730	750	660	800	780	730	700
Dry Axle Weight*	3,980	4,430	4,750	4,690	TBD	TBD	5,440	4,930	5,490	5,740	6,510	6,180	6,070
NCC (Net Carrying Capacity)	1,510	1,680	1,190	1,620	920	1,010	1,830	1,120	1,850	1,460	1,010	1,390	1,530
GVWR	6,000	6,800	6,500	6,800	6,800	6,800	8,000	6,800	8,000	8,000	8,300	8,300	8,300
Interior Height	78"	78"	78"	78"	78"	78"	78"	78"	78"	78"	78"	78"	78"
Exterior Height w/ A/C	10' 3"	10' 7"	10' 8"	10' 8"	10' 8"	10' 8"	10' 8"	10' 9"	11' 1"	11' 1"	10' 8"	10' 11"	11' 2"
Exterior Width	96"	96"	96"	96"	96"	96"	96"	96"	96"	96"	96"	96"	96"
Exterior Length	26' 8"	29' 1"	29' 8"	29' 9"	30' 9"	31' 2"	33' 11"	32' 7"	32' 6"	33' 10"	35'	36'	35' 5"
Refrigerator (cu. feet)	8	8	8	8	8	8	8	8	8	8	8	8	8
Water Heater Cap. (gal. G/E w/DSI)	6	6	6	6	6	6	6	6	6	6	6	6	6
Fresh Water Cap. (gal.)	40	40	40	40	40	40	40	40	40	40	40	40	40
Waste Water Cap. (gal.)	32	32	32	32	32	32	32	32	32	32	32	32	32
Gray Water Cap. (gal.)	32	32	32	64	64	32	32	32	32	32	32	32	64
LP Gas Cap. (lbs.)	40	40	40	40	40	40	40	40	40	40	40	40	40
Furnace BTUs (1,000s)	20	20	20	20	25	25	30	25	25	30	30	30	30
Tire Size	14"	14"	14"	14"	14"	14"	15"	14"	15"	15"	15"	15"	15"
Awning	14'	14'	14'	16'	19'	20'	18'	15'	18'	16'	13'	16'	17'

\*This weight reflects the rolling average unit weight for each model. Your trailer weight will vary according to optional equipment.



985 N 900 W • Shpshewana, IN 46565  
 E-mail [kz@kz-rv.com](mailto:kz@kz-rv.com) • [www.kz-rv.com](http://www.kz-rv.com)

Due to continual research and advances, manufacturer reserves the right to change specifications, design, price and equipment without notice, and assumes no responsibility for any error in this literature. Some items shown are not included as standard or optional equipment. ©2017KZ | 8/30/17 | 15M