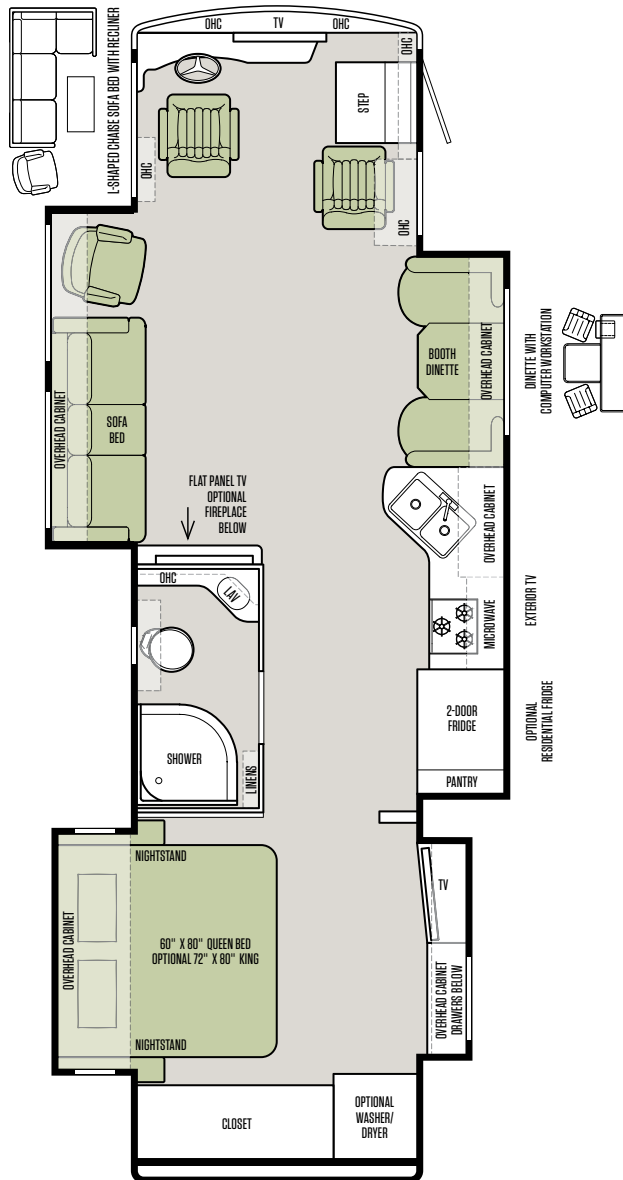


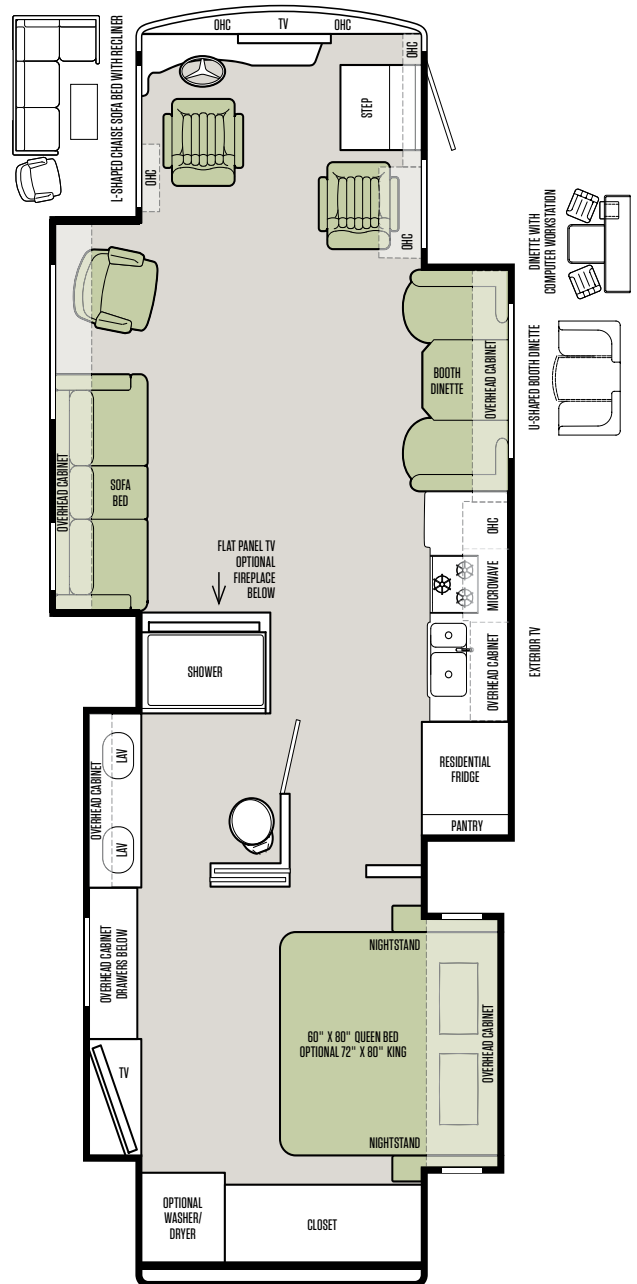
## 2018 RED FLOOR PLANS

Thoughtful in every detail  
and in every dimension.

33 AA



37 PA

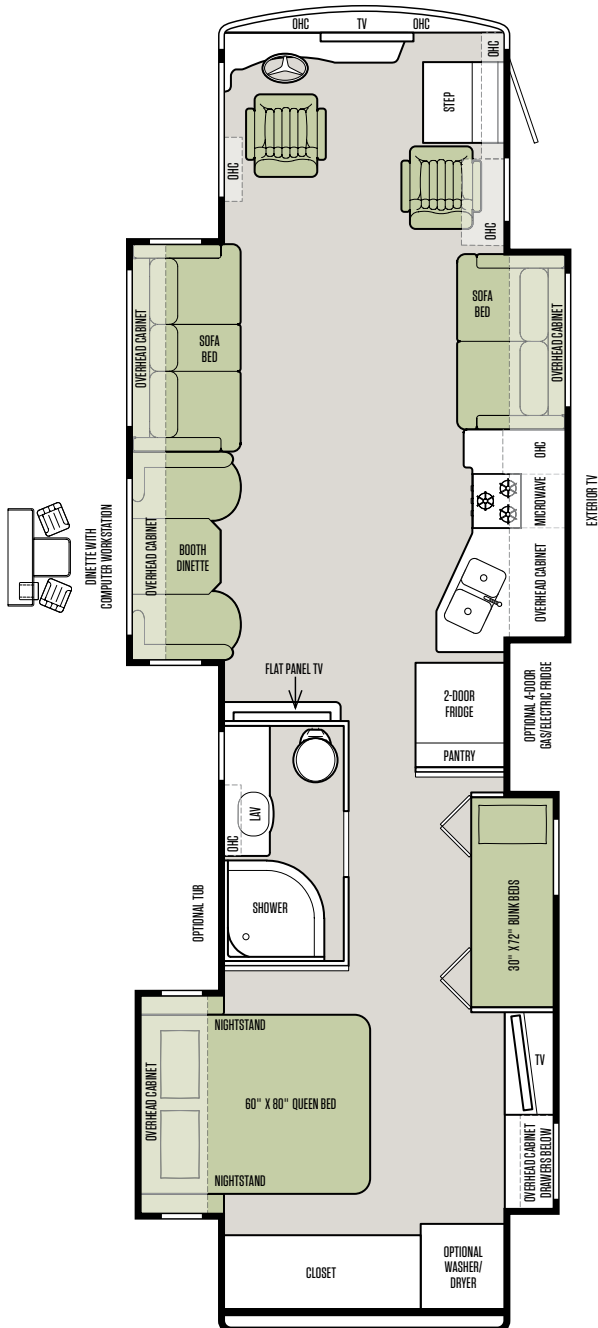


## 2018 RED FLOOR PLANS

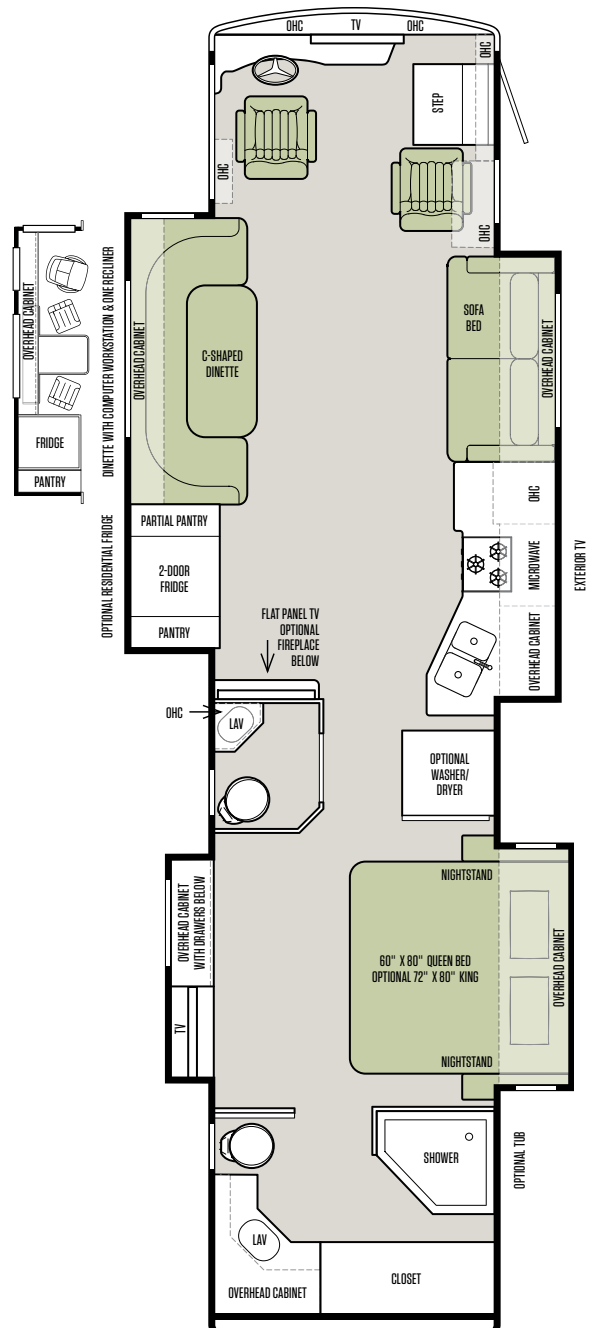


The design of every Tiffin floor plan must meet four essential criteria:  
**Maximum space.** **Optimal organization.** **Relaxation plus.** **Elegant atmosphere.**  
**MORE** plans offer your family the most comfortable layout for life on the road.

38 QBA



38 QRA



Note: If optional furniture combinations are selected, window locations may vary from diagram shown.

Now it's time to personalize your coach.

1

Start with our handcrafted hardwood cabinetry available in your choice of luxury finishes:

Amber Glazed, English Chestnut or Mocha.

#### CABINETS



AMBER GLAZED



ENGLISH CHESTNUT



MOCHA

#### FLOORING



PROSPECTIVE TILE (STANDARD)



PIETRE DEL NORDE ALASKA



CARPET

2

Then, add texture with your choice of designer fabric suites:  
Crème Fraîche, Koa Wood or Sedona.

All fabrics are treated for stain resistance.

#### CRÈME FRAÎCHE

##### LIVING AREA & KITCHEN



PILLOWS



VALANCE

##### KITCHEN

##### COUNTERTOP



BACKSPLASH



STANDARD

##### SOFA & COCKPIT SEATS



STANDARD LEATHER

##### BEDROOM



## 2018 RED INTERIOR DÉCOR

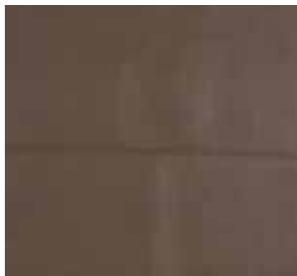
Make your experience on the road all your own. Express yourself by choosing the interior appointments such as cabinet finishes, flooring and fabric textures for every part of your motorhome. In the 2018 RED, you'll be able to go in style no matter where you go.

### KOA WOOD

#### LIVING AREA & KITCHEN



PILLOWS



VALANCE

#### KITCHEN



BACKSPLASH

#### COUNTERTOP



STANDARD

#### SOFA & COCKPIT SEATS



STANDARD LEATHER

#### BEDROOM

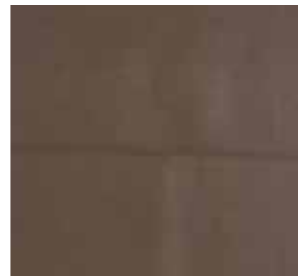


### SEDONA

#### LIVING AREA & KITCHEN



PILLOWS



VALANCE

#### KITCHEN



BACKSPLASH

#### COUNTERTOP



STANDARD

#### SOFA & COCKPIT SEATS



STANDARD LEATHER

#### BEDROOM





## 2018 RED FULL-BODY PAINT SCHEMES

### PREMIUM PAINT SYSTEM

Our eight-step full-body paint system features premium grade paints sealed with four layers of superclear coat with ultraviolet protection. An additional layer of scratch-resistant plastic coating protects the front of the coach, stairwell, and entry door lock.



CRIMSON



NASA



LAPIS SKY



SUNLIT SAND



MAROON CORAL



WHITE MAHOGANY

## AUTOMOTIVE

## Standard on All Models:

- Raised Rail Chassis Frame
- Full Air Brakes
- Air Ride Suspension
- Exhaust Brake

## CHASSIS

Freightliner® Rear Engine Diesel Chassis:	33 AA	37 PA	38 QBA	38 QRA
Cummins ISB 6.7-liter Electronic Diesel, Turbocharged, Aftercooled Engine	S	S	S	S
Allison 3000 MH 6-speed Automatic Transmission with Lock-up	S	S	S	S
Peak HP 360 HP @ 2,600 RPM	S	S	S	S
Peak Torque (lb – Ft. Max Net) 800 @ 1,800 RPM	S	S	S	S
GAWR – Front	12,000 lb	12,000 lb	12,000 lb	12,000 lb
GAWR – Rear	20,000 lb	20,000 lb	20,000 lb	20,000 lb
GVWR	32,000 lb	32,000 lb	32,000 lb	32,000 lb
GCWR	42,000 lb	42,000 lb	42,000 lb	42,000 lb
Wheel Base	198"	252"	252"	252"
Tire Size	275/80R22.5	275/80R22.5	275/80R22.5	275/80R22.5
Fuel Tank (Gallons) – Dual Fuel Fill	100	100	100	100
DEF Tank* (Gallons)	13	13	13	13
Alternator Amps	160	160	160	160
Trailer Hitch Capacity	10,000 lb	10,000 lb	10,000 lb	10,000 lb

\*Diesel Exhaust Fluid (DEF) is the active component used in Selective Catalytic Reduction (SCR) engines to reduce nitrogen oxide emissions by 90% to meet EPA standards.

## WEIGHTS &amp; MEASURES

Overall:	33 AA	37 PA	38 QBA	38 QRA
Overall Length (Approximate*)	35' 2"	39' 2"	39' 8"	39' 8"
Overall Height with Roof Air (Maximum)	12' 10"	12' 10"	12' 10"	12' 10"
Interior Height	84"	84"	84"	84"
Overall Width	101"	101"	101"	101"
Interior Width	96"	96"	96"	96"
Fresh Water (Gallons)	90	90	90	90
Black Water (Gallons)	50	50	50	50
Grey Water (Gallons)	70	70	70	70
LPG Tank (Gallons; can only be filled to 80% capacity)	24	24	24	24
Basement Storage (Cubic Feet – Approximate)	83.75	119	160	160
Minimum Garage Height	13'	13'	13'	13'

\*The approximated coach lengths do not include side-view mirrors and rear ladders.

## GENERAL EXTERIOR

## Standard on All Models:

- Fiberglass Front & Rear Caps
- Tinted One-piece Windshield
- 8.0 kw Onan® Generator
- Horizontal Mounted Wipers
- Heated Power Mirrors
- Exterior Patio Light
- Power Patio Awning
- Automatic Entry Door Awning
- Awning(s) over Slide-outs
- Aluminum Wheels
- Extraordinaire™ AC System
- Two Low Profile Roof ACs with Heat Pumps (15,000 BTUs)
- Double Electric Step
- 1/4" Thick Single Pane Windows
- Convenient Access Doors with Gas Shocks
- Single Handle Lockable Storage Door Latches
- Heated Holding Tank Compartment
- Four 6 V Auxiliary Batteries
- Digital Flat Panel TV Antenna
- Cable Flat Panel TV Ready
- 50 Amp Service
- Black Holding Tank Flush System
- Exterior Rinse Hose/Shower
- Gravity Water Fill
- Color Back-up Monitor
- 110 V Exterior Receptacle
- Undercoating
- Roof Ladder
- External Tripod Satellite Hook-up
- Exterior Storage Compartment Lights
- Chrome Mirror Heads with Integrated Turn Signal Cameras
- Full-body Paint
- Hydraulic Automatic Leveling Jacks
- Front Cap Protective Film
- Exterior Flat Panel TV
- Air Horns
- Mud Flap with Diffuser

## Available Options:

	33 AA	37 PA	38 QBA	38 QRA
In-Motion Satellite Dish	○	○	○	○
Exterior Slide-out Tray**	○	○	○	○
Prep for Solar Panel	○	○	○	○
CB Antenna	○	○	○	○
Wingard Connect	○	○	○	○

\*High-definition programming is not available on a dome satellite antenna unless you subscribe to DISH Network®.

\*\*Exterior Slide-out Tray & Central Vacuum Cleaner cannot be optioned together.

## GENERAL INTERIOR

<b>Standard on All Models:</b>				
<ul style="list-style-type: none"> <li>• High Gloss Raised Panel Hardwood Cabinet Doors</li> <li>• Solid Wood Cabinet Fascias</li> <li>• Soft Touch Vinyl Ceiling</li> <li>• Flat Panel TV in Entertainment Center</li> <li>• Ceramic Tile Flooring in Living Room &amp; Bath Area</li> <li>• Prospective Tile Floor</li> <li>• Treated Carpet &amp; Fabrics</li> <li>• Ball Bearing Drawer Slides</li> <li>• Chainless Solar &amp; Privacy Shades</li> <li>• Power Roof Vents</li> <li>• Tank Level Monitor System</li> <li>• Smoke Detector</li> <li>• 10-gallon DSI Gas/Electric Water Heater</li> <li>• Power Step Well Cover</li> <li>• 2000 Watt Sine Wave Inverter</li> <li>• Carbon Monoxide Detector</li> <li>• LED Lighting</li> <li>• Extraordinaire™ AC System</li> <li>• LPG Leak Detector</li> <li>• Home Theater Surround Sound System (Includes DVD Player)</li> </ul>				
<b>Available Options:</b>				
	<b>33 AA</b>	<b>37 PA</b>	<b>38 QBA</b>	<b>38 QRA</b>
	Stacked Washer/Dryer	O	O	O
	Central Vacuum Cleaner*	O	O	O
<b>Cabinets:</b>	Amber Glazed Solid Cabinet Doors & Drawer Fronts	O	O	O
	English Chestnut Solid Cabinet Doors & Drawer Fronts	O	O	O
	Mocha Solid Cabinet Doors & Drawer Fronts	O	O	O
<b>Fabric Suites:</b>	Crème Fraîche	O	O	O
	Koa Wood	O	O	O
	Sedona	O	O	O
<b>Floor Tiles:</b>	Pietre Del Norde Alaska Tile	O	O	O
<b>Leathers:</b>	Toscana Bailey Ultra Leather	O	O	O
	Toscana Brown Sugar Ultra Leather	O	O	O
	Toscana Molasses Ultra Leather	O	O	O

\*Exterior Slide-out Tray & Central Vacuum Cleaner cannot be optioned together.

## COCKPIT

<b>Standard on All Models:</b>				
<ul style="list-style-type: none"> <li>• Tilt Steering Wheel</li> <li>• Dual Dash Fans</li> <li>• Wood Drawers in Dash</li> <li>• Lighted Instrument Panel</li> <li>• CD Player &amp; AM/FM Stereo</li> <li>• Overhead Flat Panel TV</li> <li>• Manual Solar &amp; Privacy Shades on Side Windows</li> <li>• Power Solar &amp; Privacy Windshield Shades</li> <li>• Satellite-ready Radio (Subscription Required)</li> <li>• 12 V Dash Receptacle</li> <li>• 12 V Disconnect Switch</li> <li>• USB Dash Receptacle</li> <li>• Fire Extinguisher</li> <li>• Adjustable Seatbelt Brackets</li> <li>• Power Ultra Leather Driver &amp; Passenger Seats</li> <li>• Power Passenger Seat Footrest</li> </ul>				
<b>Available Options:</b>				
	<b>33 AA</b>	<b>37 PA</b>	<b>38 QBA</b>	<b>38 QRA</b>
	In-dash Navigation System	O	O	O

## LIVING AREA/DINETTE

<b>Available Options:</b>				
	<b>33 AA</b>	<b>37 PA</b>	<b>38 QBA</b>	<b>38 QRA</b>
	Ultra Leather Booth Dinette on Passenger Side	S	NA	NA
	Ultra Leather Booth Dinette on Driver Side	NA	S	NA
	Ultra Leather Hide-A-Bed Sofa and One Recliner on Driver Side	S	NA	NA
	Ultra Leather Hide-A-Bed Sofa on Driver Side	NA	S	NA
	Ultra Leather Hide-A-Bed Sofa on Passenger Side	NA	NA	S
	Ultra Leather DE Sofa/Sleeper on Driver Side	NA	O	NA
	Ultra Leather DE Sofa/Sleeper on Passenger Side	NA	S	NA
	Ultra Leather C-Shaped Dinette on Driver Side	NA	NA	S
	Ultra Leather L-Shaped Sofa and One Recliner on Driver Side	O	NA	NA
	Ultra Leather U-Shaped Dinette on Passenger Side	NA	NA	NA
	Dinette with Computer Workstation on Passenger Side	O	NA	NA
	Dinette with Computer Workstation on Driver Side	NA	O	NA
	Dinette with Computer Workstation and One Recliner on Driver Side	NA	NA	O
	Fireplace Below Flat Panel TV in Entertainment Center	O	NA	O

All options may not be available in every model. Because of progressive improvements, specifications, standard & optional equipment are subject to change without notice or obligation. For a complete & up-to-date list of available options & specifications, as well as information on Tiffin's full line of motorhomes, visit [tiffinmotorhomes.com](http://tiffinmotorhomes.com).

**KITCHEN**

<b>Standard on All Models:</b>	<ul style="list-style-type: none"> <li>• Double Bowl Kitchen Sink with Single Lever Satin Nickel Faucet</li> <li>• Solid Surface Galley Countertop</li> </ul>	<ul style="list-style-type: none"> <li>• Solid Surface Backsplashes</li> <li>• 3-burner Cooktop with Convection Microwave</li> </ul>	<ul style="list-style-type: none"> <li>• Solid Surface Cooktop Cover</li> <li>• 2-door Refrigerator with Pantry</li> </ul>
--------------------------------	---	--	--

<b>Available Options:</b>	<b>33 AA</b>	<b>37 PA</b>	<b>38 QBA</b>	<b>38 QRA</b>
Oven with Convection Microwave	O	O	O	O
2-door Gas/Electric Refrigerator with Icemaker	O	NA	O	O
4-door Gas/Electric Refrigerator with Icemaker	O	NA	O	O
Solid Wood Refrigerator Panels (2-door Refrigerator)	O	NA	O	O
Residential Refrigerator	O	S	NA	O

**BATH**

<b>Standard on All Models:</b>	<ul style="list-style-type: none"> <li>• Medicine Cabinet</li> <li>• Skylight &amp; LED Light in Shower</li> </ul>	<ul style="list-style-type: none"> <li>• Molded Fiberglass One-piece Shower</li> <li>• Solid Surface Vanity Top</li> </ul>	<ul style="list-style-type: none"> <li>• Roof Vent Fan</li> </ul>
--------------------------------	--	--	---

<b>Available Options:</b>	<b>33 AA</b>	<b>37 PA</b>	<b>38 QBA</b>	<b>38 QRA</b>
Tub (in Place of Shower)	NA	NA	O	O

**BEDROOM**

<b>Standard on All Models:</b>	<ul style="list-style-type: none"> <li>• Wardrobe with Automatic Light</li> <li>• Bed Comforter with Throw Pillows</li> </ul>	<ul style="list-style-type: none"> <li>• Flat Panel TV</li> <li>• Carpeted Flooring</li> </ul>	<ul style="list-style-type: none"> <li>• Inner Spring Queen Mattress (60" x 80")</li> <li>• Solar/Privacy Shades</li> </ul>
--------------------------------	---	--	---

<b>Available Options:</b>	<b>33 AA</b>	<b>37 PA</b>	<b>38 QBA</b>	<b>38 QRA</b>
Memory Foam King Bed Mattress (72" x 80")	O	O	NA	O
Bunk Beds (30" x 72") with Bunk Ladder/Convertible Wardrobe	NA	NA	S	NA
DVD Monitors in Bunk Beds	NA	NA	O	NA
Bedroom Ceiling Fan	O	O	O	O

The 2017 RED features these Tiffin innovations:



The design of every Tiffin floor plan must meet four essential criteria: Maximum space. Optimal organization. Relaxation plus. Elegant atmosphere.



This Tiffin coach will surpass a competitor's model of equivalent size in the quantity and quality of storage.