

CONNECT

Spree®

Lightweight Travel Trailers



Standards

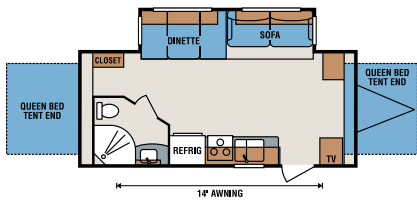
- 3/8" Fully Walk On Roof with SuperFlex Roofing Material
- 5/8" Tongue and Groove Plywood Floor
- 2 Pillows for Sofa
- 4 Stabilizer Jacks
- 6 Cubic Double Door Refrigerator
- 6 Gallon Gas/Electric DSI Water Heater
- 20# Gas Bottles
- 30 Amp Service
- 13,500 BTU A/C
- All Aqualon Tents (C200RBT only) – 5 Year Warranty
- Black Tank Flush
- Bottle Cover
- Decorative Wall Border
- Deep Quilt Cotton Cloud Mattress
- Designer Headboard
- Extra Large Baggage Doors with Magnetic Catches
- EZ Lube Axles
- Fold Away Assist Grab Handle
- Gas Struts on Bed Base

- Hand Crafted Mortise and Tenon Glazed Cabinet Doors
- Heated and Enclosed Underbelly
- High Definition Designer Countertops
- High Rise Faucet
- Jensen AM/FM/CD/DVD player with Bluetooth
- LED Interior and Exterior Lighting
- Night Shades
- Outside Shower
- Oven
- Overhead Cabinets in Slide Over Sofa and Dinette
- Patio Light
- Protective Diamond Plate on Front End
- Reversible Comforter
- Rich Woodbridge Maple Cabinetry
- Roller Ball Bearing Drawer Glides
- Roof Vent in Bath
- Sandlewood Exterior
- Satellite and Cable Preparation
- Skylight in Kitchen
- Skylight Over Tub

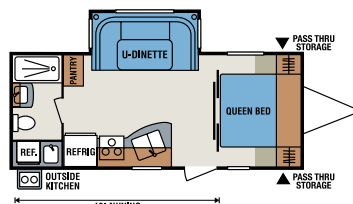
- Teddy Bear Bunk Mats
- Tub Surround
- Water Heater By-Pass
- Wood Plank Look Flooring From Front to Rear

Options

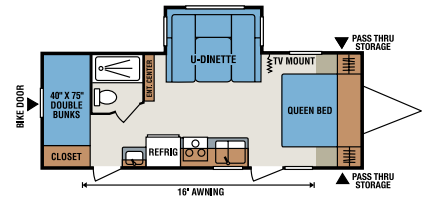
- 15,000 BTU A/C
- 2nd A/C
- 50 Amp Service
- Aluminum Wheels
- Deluxe Sleeper Sofa
- Multi-Directional LED Lighted Power Awning with Speakers (Forced Option)
- Outside Refrigerator in Front Storage Compartment (Floorplan Dependant)
- Power Tongue Jack
- Spare Tire/Carrier/Cover
- Table and 4 Chairs
- TV
- Cotton Cloud Gel Foam Mattress Upgrade



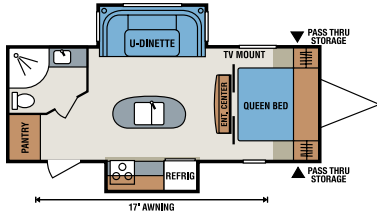
C200RBT



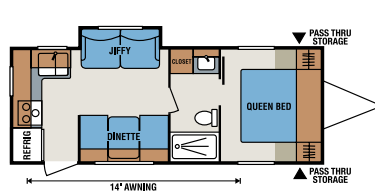
C220RBK



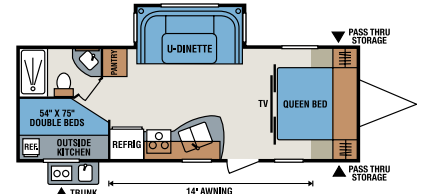
C231BHS



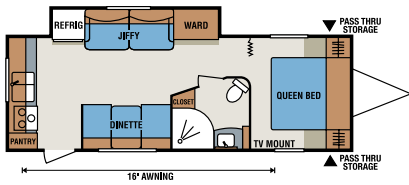
C232IKS



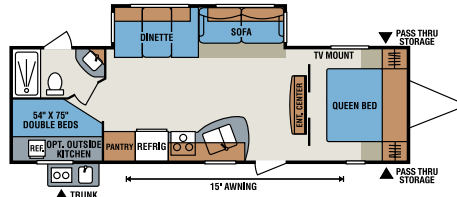
C241RKS



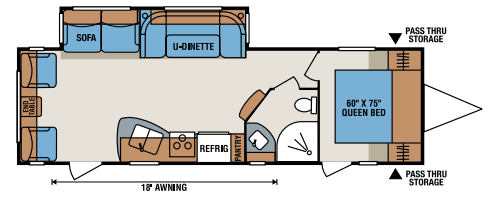
C250BHS



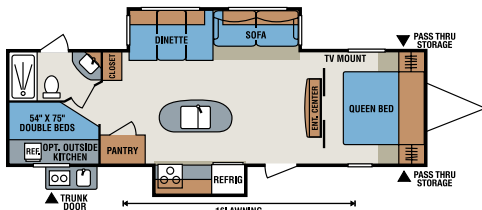
C260RKS



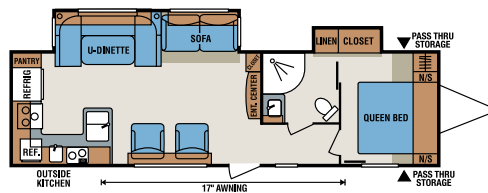
C283BHS



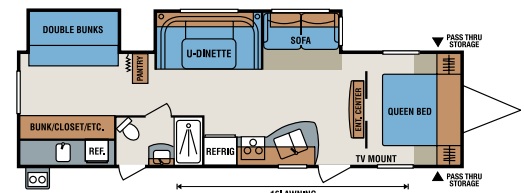
C290RLS



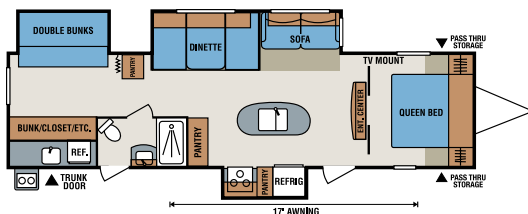
C291IKS



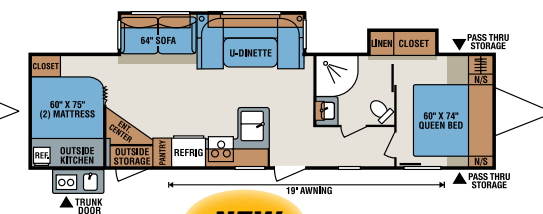
C321RKS



C322BHS

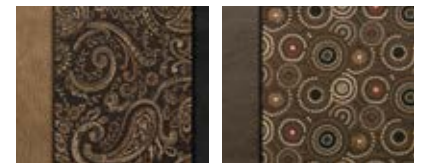


C322IKS



C326BHS **NEW**

2016 Décor



Estate

Ginger

Lightweight Travel Trailers	C200RBT	C220RBK	C231BHS	C232IKS	C241RKS	C250BHS	C260RKS	C283BHS	C290RLS	C291IKS	C321RKS	C322BHS	C322IKS	C326BHS
UVW (Unloaded Vehicle Weight)*	4,790	4,700	4,790	5,440	4,490	5,120	5,180	5,680	6,150	6,540	6,770	6,910	7,450	7,200
Dry Hitch Weight*	670	490	540	670	510	690	490	750	660	800	700	730	850	950
Dry Axle Weight*	4,120	4,210	4,250	4,770	3,980	4,430	4,690	4,930	5,490	5,740	6,070	6,180	6,600	6,250
NCC (Net Carrying Capacity)	1,210	1,300	1,210	1,060	1,510	1,680	1,620	1,120	1,850	1,460	1,530	1,390	1,350	1,600
GVWR	6,000	6,000	6,000	6,500	6,000	6,800	6,800	6,800	8,000	8,000	8,300	8,300	8,800	8,800
Interior Height	78"	78"	78"	78"	78"	78"	78"	78"	78"	78"	78"	78"	78"	78"
Exterior Height w/ A/C	10' 8"	10' 7"	10' 4"	11' 2"	10' 3"	10' 7"	10' 8 1/2"	10' 9"	11' 1"	11' 1"	11' 2"	10' 11"	11' 3"	10' 11"
Exterior Width	96"	96"	96"	96"	96"	96"	96"	96"	96"	96"	96"	96"	96"	96"
Exterior Length	23' 7"	24' 9"	27'	25' 8"	25' 9"	28' 2"	28' 8"	32' 2"	32' 6"	33' 4"	34' 6"	35' 6"	36' 4"	36' 8"
Refrigerator (cu. feet)	6	6	6	6	6	6	6	6	6	6	6	6	6	6
Water Heater Cap. (gal. G/E w/DSI)	6	6	6	6	6	6	6	6	6	6	6	6	6	6
Fresh Water Cap. (gal.)	40	40	40	40	40	40	40	40	40	40	40	40	40	40
Waste Water Cap. (gal.)	32	32	32	32	32	32	32	32	32	32	32	32	32	32
Gray Water Cap. (gal.)	32	32	32	32	32	32	64	32	32	32	32	32	32	32
LP Gas Cap. (lbs.)	40	40	40	40	40	40	40	40	40	40	40	40	40	40
Furnace BTUs (1,000s)	20	20	20	20	20	20	20	25	25	30	30	30	30	30
Tire Size	14"	14"	14"	14"	14"	14"	14"	14"	15"	15"	15"	15"	15"	15"
Awning	14'	13'	16'	17'	14'	14'	16'	15'	18'	16'	17'	16'	17'	19'

*This weight reflects the rolling average unit weight for each model. Your trailer weight will vary according to optional equipment.



985 N 900 W • Shipshewana, IN 46565
E-mail kz@kz-rv.com • www.kz-rv.com

Due to continual research and advances, manufacturer reserves the right to change specifications, design, price and equipment without notice, and assumes no responsibility for any error in this literature. Some items shown are not included as standard or optional equipment. ©2015KZ | 9/3/15 | 10M