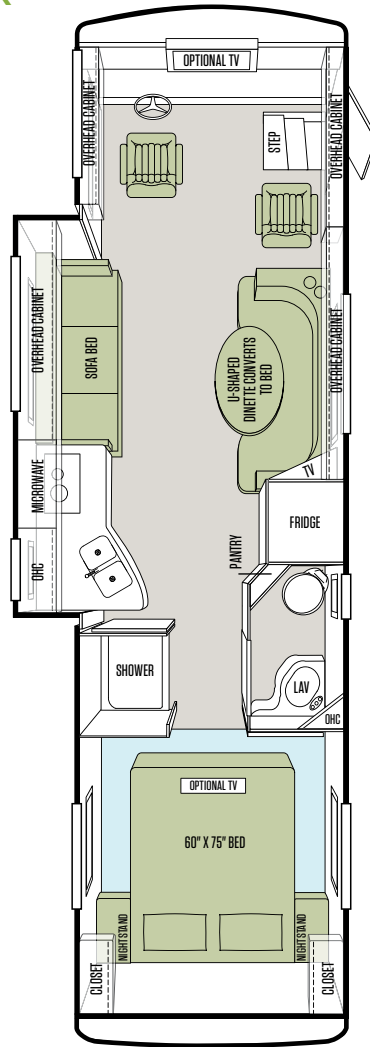


Floor Plans* & Options

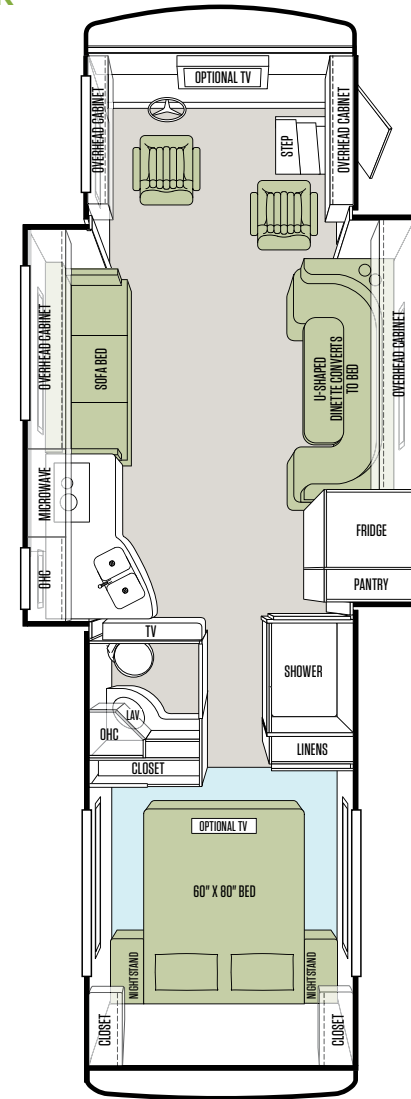
There's an Allegro Breeze floor plan perfect for how you live. That's because all Tiffin floor plans are based on ideas and recommendations from customers like you, folks who share your lifestyle needs. We actively survey owners for their suggestions on modifications that can help improve the flow and functionality of our layouts. Our engineers utilize every single inch of each plan, giving you room to roam on the inside while you roam on the outside.

28 BR



OPTIONAL TILE FLOOR
IN BEDROOM

32 BR



OPTIONAL TILE FLOOR
IN BEDROOM

*Additional floor plans may be added throughout the model year. For a complete and current list of available floor plans and options, visit us online at tiffinmotorhomes.com

Interior Décor

As attractive as Tiffin coaches are on the outside, the interior is where we excel. And the Allegro Breeze is no exception. Our interior designers have put together a selection of rich color schemes to suit many decorating styles. Each option beautifully complements the tones found in the decorative accents and hardwood cabinetry handcrafted in our Red Bay mill shop and will certainly enhance your personal decorative touches.

Cabinets



Medium Alderwood



English Chestnut

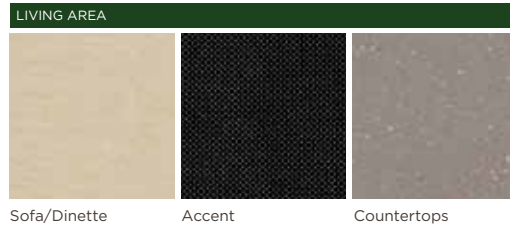


Ivory Cream

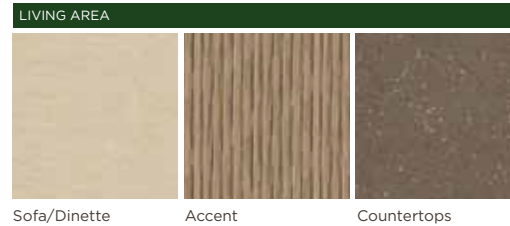
Carpet



Fossil Fabric Suite



Maui Fabric Suite



Summer Fabric Suite



Allegro Breeze cabinet doors are made of solid wood, and all cabinet finishes are available in combination with any fabric suite. All options may not be available in every model. Because of progressive improvements, specifications, standard & optional equipment are subject to change without notice or obligation. For a complete and up-to-date list of available options and specifications, visit tiffinmotorhomes.com



Gold Coral



Silver Sand



Maroon Coral



Sunlit Sand



Rocky Mountain Brown

Full-body Paint Schemes

Full-body paint is standard on the 2012 Allegro Breeze, as is the protective film that seals in the paint to help retain the fresh-painted shine. Tiffin's paint facility is one of the largest in the country and features a state-of-the-art air filtration system that ensures an impeccable finish. Quality control checks are integrated into the painting process. Meticulous attention is given to every single inch of the Allegro Breeze to produce the most precise application.

Specifications

Automotive

STANDARD ON ALL MODELS:

- Allison 1000 MH 6-speed Automatic with Lock-up
- Air Ride Suspension
- Full Air Brakes

Chassis

POWERGLIDE® REAR ENGINE DIESEL CHASSIS:	28 BR	32 BR
Engine	Navistar MaxxForce® 7	Navistar MaxxForce® 7
Peak HP	215 HP @ 2,600 RPM	215 HP @ 2,600 RPM
Peak Torque (Lb.—Ft. Max Net)	560 @ 1,400	560 @ 1,400
GAWR—Front	8,500 Lb.	8,500 Lb.
GAWR—Rear	13,500 Lb.	15,000 Lb.
GVWR	22,000 Lb.	23,500 Lb.
GCWR	26,000 Lb.	28,000 Lb.
Wheel Base	152"	202"
Wheel to Wheel Width	101"	101"
Tire Size	265/70R19.5	265/70R19.5
Fuel Tank (Gallons)	65	65
Alternator Amps	170	170
Trailer Hitch Capacity	4,000 Lb.	4,500 Lb.

Weights & Measures

OVERALL:	28 BR	32 BR
Overall Length (Approximate)	29' 7"	33' 2"
Overall Height with Roof Air (Maximum)	11' 2"	11' 2"
Interior Height	78"	78"
Overall Width	95"	95"
Interior Width	91"	91"
Fresh Water (Gallons)	70	70
Black Water (Gallons)	30	30
Grey Water (Gallons)	50	50
LPG Tank (Gallons; can only be filled to 80% capacity)	20	20
Basement Storage (Cubic Feet - Approximate)	45	83
Minimum Garage Height	12'	12'

Exterior

STANDARD ON ALL MODELS:

- Fiberglass Front & Rear Caps
- Tinted One-piece Windshield
- 6.0 kw Onan® Generator
- Horizontal Mounted Wipers
- Heated Power Mirrors
- Gel-coat Fiberglass Walls
- Exterior Patio Light
- Power Patio Awning
- Slide-out Awning(s)
- Entry Door Awning
- Aluminum Wheels
- Quiet A/C Roof-ducted System
- Electric Step
- Single Pane Windows
- Convenient Access Doors with Gas Shocks
- Ridged Long-life Storage Boxes
- Single Handle Lockable Storage Door Latches
- Heated Water & Holding Tank Compartments
- Two 6 V Auxiliary Batteries
- Park Telephone Ready
- Digital/Analog TV Antenna
- Cable Ready TV
- 50 Amp Service
- Black Holding Tank Flush System
- Exterior Rinse Hose/Shower
- Back-up Monitor
- 110 V Exterior Receptacle
- 110 V/12 V Converter
- Undercoating
- Roof Ladder
- External Tripod Satellite Hook-up
- Exterior Storage Compartment Lights
- Paint Protective Film
- Side-view Cameras Activated by Turn Signals
- Full-body Paint
- Level Air System

AVAILABLE OPTIONS:	28 BR	32 BR
Automatic *	O	O
13,500 BTU Low Profile Roof A/C—Front	S	S
2nd 13,500 BTU Low Profile Roof A/C—Rear	O	S
15,000 BTU Low Profile Roof A/C with Heat Pump (in Place of Front A/C)	O	O

*High-definition programming is not available on a domed satellite antenna unless you subscribe to DISH Network®.

Cockpit

STANDARD ON ALL MODELS:

- Non-power Cloth Driver & Passenger Seats (Flexsteel®)
- Lighted Instrument Panel
- Contemporary-styled Dash
- Single CD Player & AM/FM Stereo
- Dual 12 V Dash Receptacles
- Back-up Monitor
- Dash Gauges with Diagnostic System
- Dual Dash Fans
- Auxiliary Start
- Adjustable Gas & Brake Pedals
- Two Cupholders
- Power Solar/Privacy Windshield Shades
- Manual Solar/Privacy Shades on Side Windows
- Fire Extinguisher
- Snack/Beverage Tray

AVAILABLE OPTIONS:	28 BR	32 BR
Power Cloth Driver & Passenger Seats	<input type="radio"/>	<input type="radio"/>
Power Leather Driver & Passenger Seats	<input type="radio"/>	<input type="radio"/>
Front Overhead TV	<input type="radio"/>	<input type="radio"/>

Living Area/Dinette

STANDARD ON ALL MODELS:

- U-shaped Dinette Converts to Bed
- Midsection TV
- Inverter for Televisions & Optional Surround Sound
- Cloth DE Sofa/Sleeper on Driver Side

AVAILABLE OPTIONS:	28 BR	32 BR
Halo Leather DE Sofa/Sleeper on Driver Side	<input type="radio"/>	<input type="radio"/>
DVD Player (NA with Surround Sound Option)	<input type="radio"/>	<input type="radio"/>
Home Theater Surround Sound System (Includes DVD Player)	<input type="radio"/>	<input type="radio"/>

Kitchen

STANDARD EQUIPMENT ON ALL MODELS:

- Solid Surface Countertops
- Solid Surface Backsplashes and Splash Guard
- Solid Wood Refrigerator Panels
- Double Bowl Stainless Steel Sink
- 2-burner Cooktop with Folding Glass Cover
- Convection Microwave with Exterior Venting
- 8 Cubic Foot Refrigerator

AVAILABLE OPTIONS:	28 BR	32 BR
Icemaker in Freezer	<input type="radio"/>	<input type="radio"/>

Bath

STANDARD EQUIPMENT ON ALL MODELS:

- Medicine Cabinet
- Skylight in Shower & Water Closet
- Satin Nickel Vanity Faucet
- Molded Fiberglass One-piece Shower
- Solid Surface Vanity Top
- Fantastic® Fan
- Carbon Monoxide & Propane Gas Detectors

Bedroom

STANDARD EQUIPMENT ON ALL MODELS:

- Dual Wardrobes
- Bed Comforter with Throw Pillows
- Memory Foam Queen Mattress
- Four Large Drawers in Bed Pedestal
- Wall-to-wall Carpeting
- Solar/Privacy Shades

AVAILABLE OPTIONS:	28 BR	32 BR
Vinyl Tile Flooring in Bedroom	<input type="radio"/>	<input type="radio"/>
Bedroom TV	<input type="radio"/>	<input type="radio"/>

All options may not be available in every model. Because of progressive improvements, specifications, standard & optional equipment are subject to change without notice or obligation. For a complete and up-to-date list of available options and specifications, visit tiffinmotorhomes.com

Interior

STANDARD EQUIPMENT ON ALL MODELS:

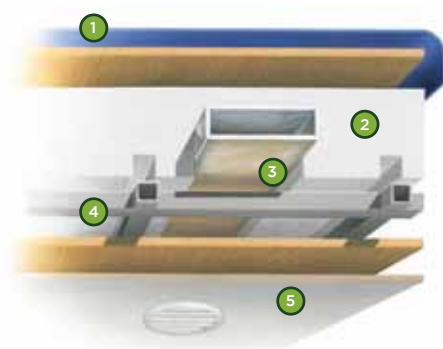
- High Gloss Raised Panel Cabinet Doors
- Vinyl Headliner
- Scotchgard® Treated Carpet & Fabrics
- Wall-to-wall Vinyl Tile Flooring in Living Room, Kitchen & Bath
- Ball Bearing Drawer Slides
- Solar/Privacy Shades in Living Room
- LED Bulbs in Ceiling Lights Only
- Tank Level Monitor System
- Smoke Detector
- 6-gallon DSI Gas/Electric Water Heater
- Step Well Cover

AVAILABLE OPTIONS:	28 BR	32 BR
Vacuum Cleaner System	<input type="radio"/>	<input type="radio"/>
Ivory Cream Solid Cabinet Doors & Drawer Fronts	<input type="radio"/>	<input type="radio"/>
English Chestnut Solid Cabinet Doors & Drawer Fronts	<input type="radio"/>	<input type="radio"/>
Medium Alderwood Solid Cabinet Doors & Drawer Fronts	<input type="radio"/>	<input type="radio"/>
Ducted Furnace	One 35,000 BTU	Two 30,000 BTU

Structural/Construction

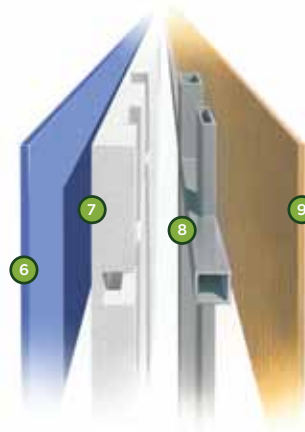
STANDARD ON ALL MODELS:

- Laminated Floor, Sidewall & Roof
- Steel/Aluminum Reinforced Structure
- One-piece Molded Fiberglass Roof Cap



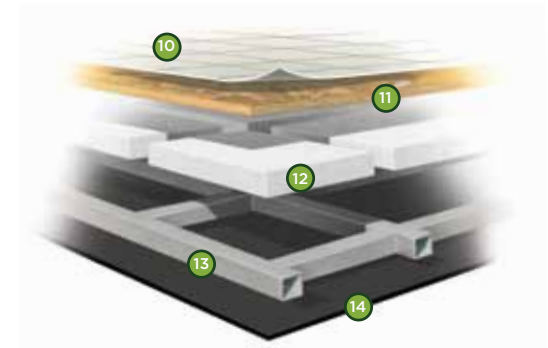
Roof

- 1 One-piece, moisture resistant molded fiberglass roof cap provides insulation and strength and prevents water intrusion
- 2 5 1/2" formed insulation
- 3 Quiet Air Cooling System with return air and foil-wrapped cooling exhaust ducts
- 4 Durable, tubular aluminum roof skeleton
- 5 Easy-to-clean soft touch vinyl ceiling panel



Sidewall

- 6 Gel-coat fiberglass outside wall panel
- 7 High-performance thermal insulation
- 8 Durable, yet lightweight, tubular aluminum wall skeleton
- 9 Decorative inside wall panel



Floor

- 10 Vinyl tile floor bonded to high-impact oriented strand board
- 11 High-level engineered oriented strand board
- 12 High-performance thermal insulation
- 13 Durable, tubular floor skeleton
- 14 Woven moisture barrier material