

# CONNECT

Lightweight Travel Trailers

2019 Décor



Cream



Kona

## Standards

- 3/8" Fully Walk-On Roof Decking
- 1-Piece Seamless Roof w/SuperFlex® Roofing Material
- UVA & UVB Resistant Gelcoat Lamilux® Exterior Fiberglass
- Protective Front Diamond Plate
- Extra-Large Baggage Doors w/ Magnetic Catches
- KZ Easy-Catch Baggage Door Systems
- LED Exterior Lighting
- Outside Entertainment Prep (EXT 110V & cable outlets)
- Outside Shower
- (4) Stabilizer Jacks
- (2) 20# LP Bottles w/Bottle Cover
- Satellite & Cable Hookups
- 30 AMP Service
- 13,500 BTU A/C
- Water Heater Bypass
- Black Flush Tank
- Digital TV Antenna w/Booster
- 3-Burner Range w/Oven
- High-Rise Faucet
- Rich Woodbridge Maple Cabinetry
- Hand-Crafted Mortise & Tenon Glazed Cabinet Doors
- Roller Ball Bearing Drawer Glides
- Linoleum Throughout
- LED Interior Lighting
- Nightshades
- Shower Surround
- Skylight over Tub
- Roof Vent in Bath

- High Thread Count Quilted Reversible Queen Bedspread
- Gas Struts on Bed Base

## Options

- Roof Ladder
- Pillowtop Mattress
- Tri-Fold Hide-a-Bed Sofa (N/A C241BHK)
- 50 AMP Service for 2nd A/C
- 15,000 A/C IPO 13,500 BTU
- 2nd A/C – 13.5K
- F/S Dinette Table & 4 Chairs IPO Dinette (N/A C241BHK)
- Theater Seating w/Heat & Massage Features IPO Jackknife (N/A C241BHK, C303RL)
- Bumper Mount Grill
- MaxAir Vent Fan (bathroom only)
- Bedroom LED TV w/Inside/Outside TV Bracket
- Front & Rear Electric Stabilizer Jacks
- Trundle Bed IPO Dinette in Bunk Slide (C322BHK)
- 10 CU FT 12V Refrigerator IPO 8 CU FT Stainless Steel Gas/Electric Refrigerator
- Wireless Backup Camera System – Observation
- Radiant Technology Package (foil in floor, roof, front & rear)
- 30" Fireplace

## Platinum Package

- Fiberglass Front Cap
- Pillowtop Mattress
- Headboard

## KZ Advantage Package (mandatory option)

### Exterior

- Color Infused Titanium Exterior Fiberglass
- Flip-Up Entry Step (main entry)
- Friction Hinged Entry Door
- Power Front Jack
- Key-Alike Program for Baggage & Entry Doors
- Magnetic Catches for Baggage Doors
- Screenshot on Entry Door
- Large Folding Grab Handle
- Exterior Speakers
- Spare Tire
- ToyLok®
- Solar Prep
- Backup Camera Prep
- Flip Down 71" Storage Rack
- Equa-Flex® Suspension
- Nitrogen Filled Tires
- Battery Disconnect Switch
- Climate Package (heated, insulated & enclosed underbelly)

### Interior

- Jackknife w/Middle Console & Bolster Arms
- Drop-In Cooktop w/Glass Cover & Oven
- Bed Storage System
- 12V Dual USB Port in LR
- Seamless Countertops w/Deep Undermount Stainless Steel Kitchen Sink
- Sink Covers

- Plywood Bed Base w/Gas Struts
- 12V Dual USB in Bunk Area
- (2) 6.5" Interior Speakers
- LED TV
- Multimedia Stereo w/Bluetooth, DVD & NFC Wireless Connectivity
- (2) LED Motion Sensor Lights
- 60"x 80" Queen Mattress
- 36" Storage Bins at Dinette
- Kitchen Skylight
- Bright White LED Light Strip above Slideout Room (main LR only)
- Flush Floor Slideouts
- Wider Pocket/Passage Interior Doors

## KZ Convenience Package (mandatory option)

### Exterior

- Aluminum Wheels
- Power Awning w/LED Light Strip
- Omnidirectional HDTV Antenna
- LED Lights in Exterior Speakers

### Interior

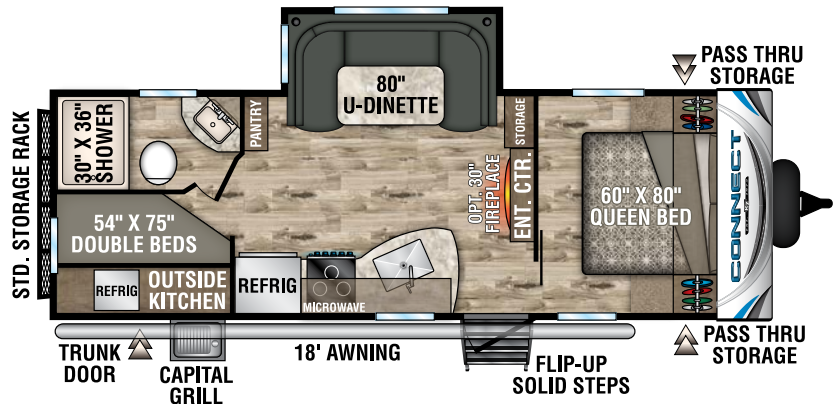
- Residential Grade Linoleum
- 8 CU FT Gas/Electric Refrigerator w/ Temperature Controls
- Stainless Steel Microwave
- Stainless Steel Residential Kitchen Faucet w/Pulldown Sprayer
- Interior Control Switches on Overhead End Cabinet
- Accent Trim on Corners/Entry Doors
- Porcelain Toilet w/Foot Flush

Lightweight Travel Trailers	C241BHK	C241RLK	C261RB	C261RKK	C261RL	C271BHK	C281BH	C281BHK	C291RL	C303RL	C313RK	C322BHK	C332BHK
UVW (Unloaded Vehicle Weight)*	5,120	5,670	6,050	6,080	6,050	6,240	6,170	6,100	6,595	7,290	TBD	7,700	7,852
Dry Hitch Weight*	690	620	720	590	700	780	730	760	705	780	TBD	790	1,050
Dry Axle Weight*	4,430	5,050	5,330	5,490	5,350	5,460	5,440	5,340	5,890	6,510	TBD	6,910	TBD
NCC (Net Carrying Capacity)	1,680	1,130	950	920	950	960	1,830	1,100	1,705	1,010	TBD	1,100	948
GVWR	6,800	6,800	7,000	7,000	7,000	7,200	8,000	7,200	8,300	8,300	TBD	8,800	8,800
Interior Height	78"	78"	78"	78"	78"	78"	78"	78"	78"	78"	78"	78"	78"
Exterior Height w/ A/C	10' 7"	10' 8"	10' 8"	10' 8"	10' 8"	10' 8"	10' 8"	10' 9"	10' 8"	10' 8"	10' 8"	10' 8"	10' 8"
Exterior Width	96"	96"	96"	96"	96"	96"	96"	96"	96"	96"	96"	96"	96"
Exterior Length	29' 1"	29' 8"	30' 9"	31'	31' 2"	32' 10"	33' 11"	32' 7"	33' 11"	35'	36' 2"	37' 9"	37' 9"
Refrigerator (cu. feet)	8	8	8	8	8	8	8	8	8	8	8	8	8
Water Heater Cap. (gal. G/E w/DSI)	6	6	6	6	6	6	6	6	6	6	6	6	6
Fresh Water Cap. (gal.)	40	40	40	40	40	40	40	40	40	40	40	40	40
Waste Water Cap. (gal.)	32	32	32	32	32	32	32	32	32	32	32	64	64
Gray Water Cap. (gal.)	32	32	64	64	32	64	32	32	32	32	64	64	64
LP Gas Cap. (lbs.)	40	40	40	40	40	40	40	40	40	40	40	40	40
Furnace BTUs (1,000s)	30	30	30	30	30	30	30	30	30	30	30	30	30
Tire Size	14"	14"	14"	14"	14"	14"	15"	14"	15"	15"	15"	15"	15"
Awning	18'	18'	19'	16'	20'	17'	18'	15'	20'	13'	13'	10'/11'	19'

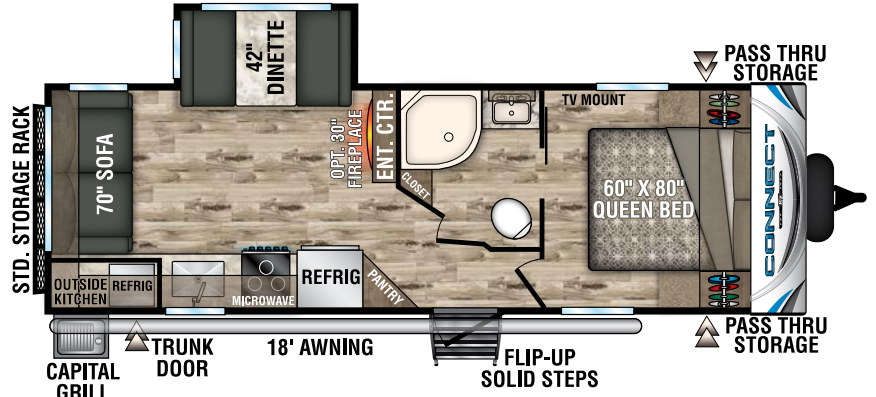
\*This weight reflects the rolling average unit weight for each model. Your trailer weight will vary according to optional equipment.

# CONNECT

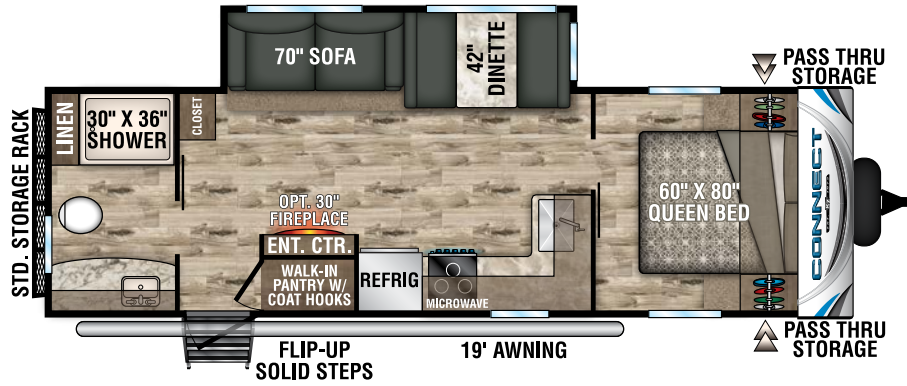
C241BHK



C241RLK

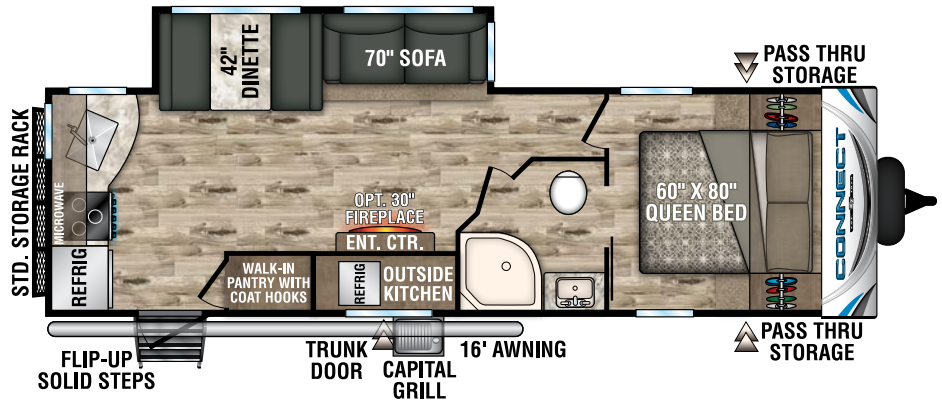


C261RB

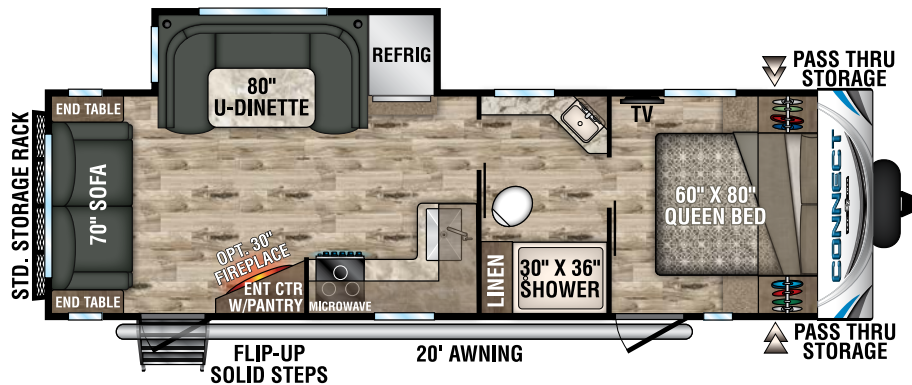


C261RKK

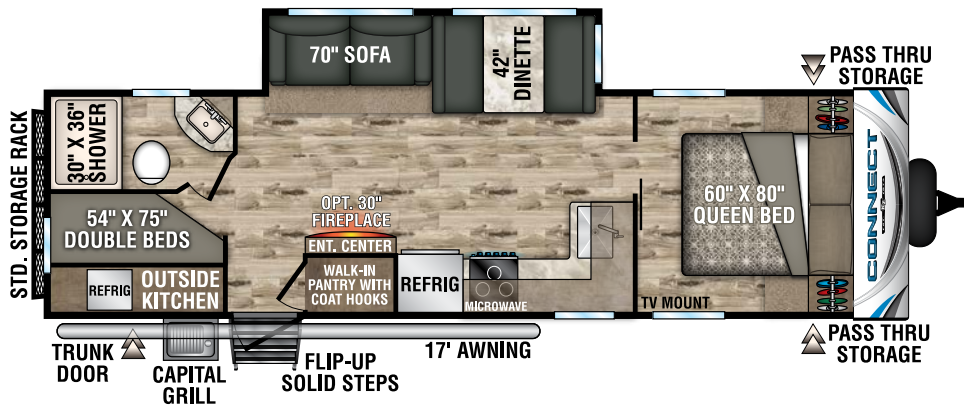
NEW



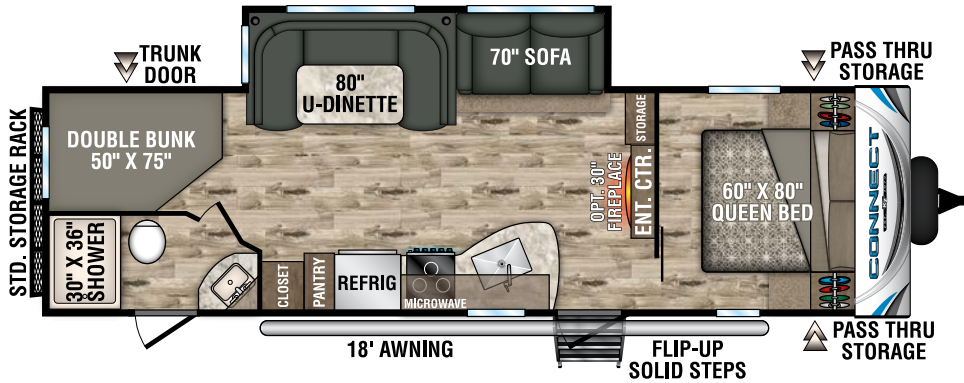
C261RL



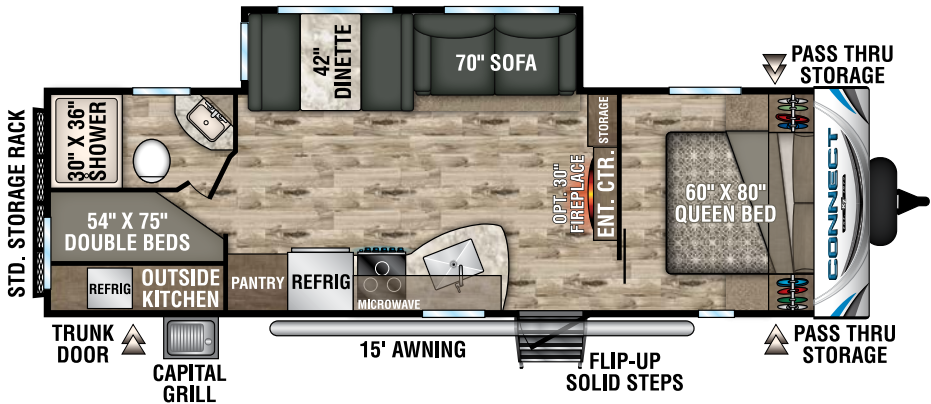
C271BHK



C281BH

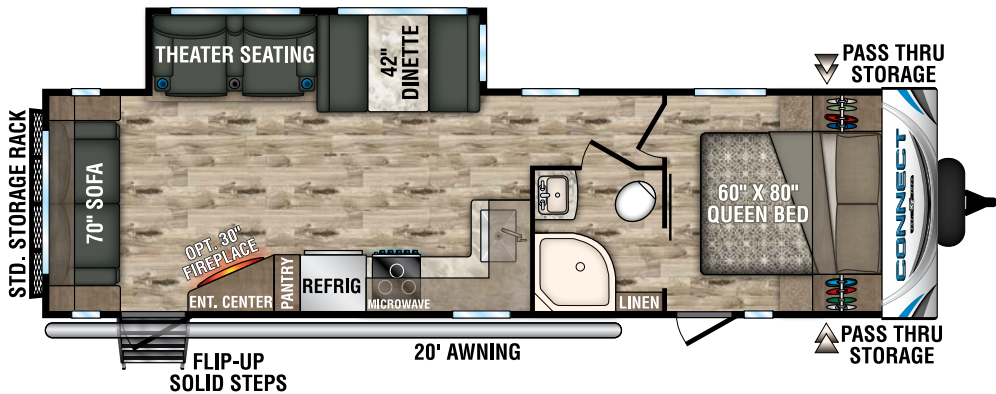


C281BHK



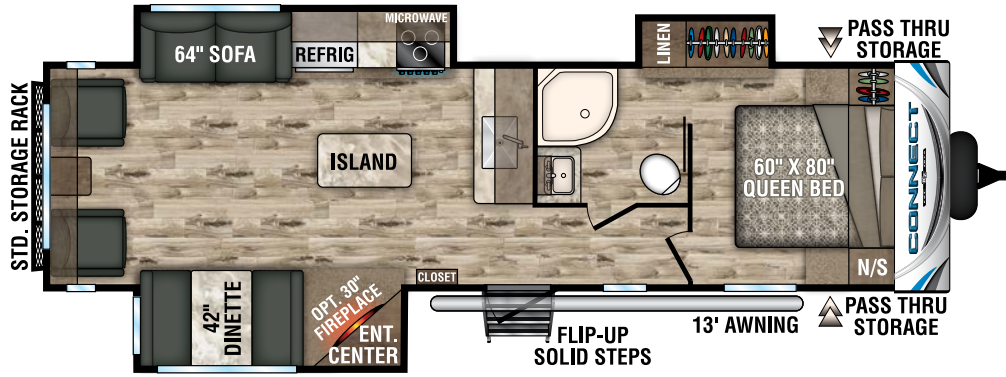
C291RL

NEW



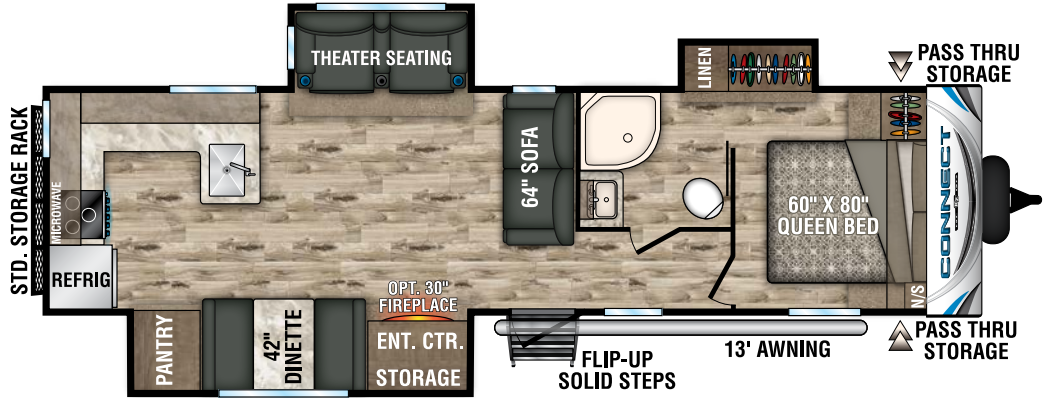


C303RL



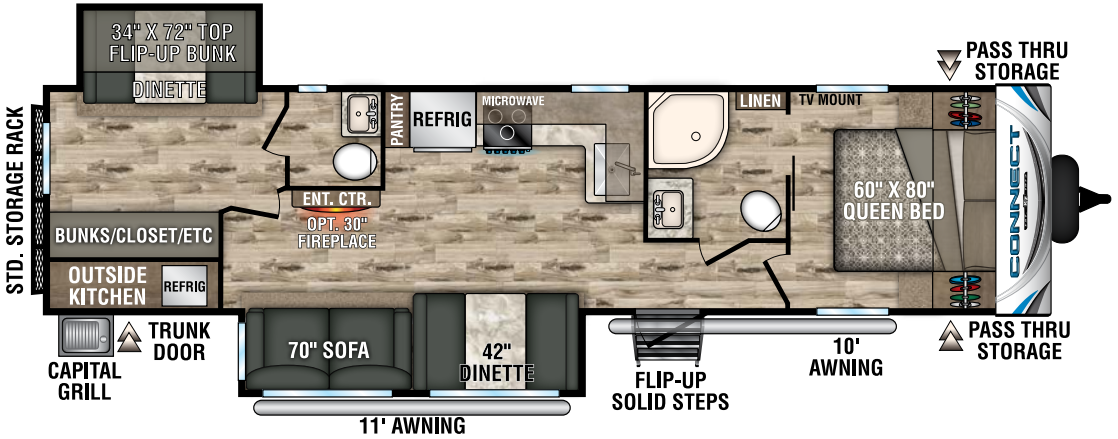
C313RK

NEW



C322BHK

NEW



C332BHK

NEW

