

Spree®

Luxury Lightweight Travel Trailers

2018 Décor



Fossil



Seal



Stone

Standards

- 3/8" Fully Walk-On Roof Decking
- 1-Piece Seamless Roof w/SuperFlex® Roofing Material
- Awning w/Drip Rail & Spouts
- White Color-Infused Gelcoat F/G Sidewalls
- Tinted Windows
- 5/8" Tongue & Groove Plywood Floor
- 26" Radius Entry Door
- Triple Step
- Slam Latch Baggage Doors
- Self-Adjusting Brakes
- 15" Tires
- Rear Bumper W/Sewer Hose Storage
- LED Exterior Lighting
- 30 AMP Service
- 13,500 BTU A/C
- Black Tank Flush
- Exterior Shower
- Digital TV Antenna w/Booster
- Cable Hookup
- Satellite Prep
- Monitor Panel
- Stainless Steel Oven
- Stainless Steel Microwave w/Turntable
- Drawers under Refrigerator & Oven (where applicable)
- Large Overhead Cabinets
- Solid Wood-Framed Mortise & Tenon Glazed Cabinet Doors
- Roller Ball Bearing Drawer Guides
- Kitchen Skylight
- LED Interior Lighting
- Nightshades
- Bath Skylight
- Power Bath Vent
- Decorative Bedspread
- Designer Headboard

Options

- Freestanding Dinette Table and (4) Chairs IPO Dinette
- Theater Seating (required on S343RSK, S343RE)
- Trundle Bed IPO Dinette in Bunk Slide (S333BHK)
- 15,000 BTU A/C IPO 13,500 BTU A/C

- 50 AMP Service & Wire for 2nd A/C
- 2nd A/C – 13,500 BTU
- Fireplace (N/A S251RK)
- Roof Ladder
- MaxAir® Vent Fan (bathroom only)
- Bumper-Mount Grill
- Bedroom LED TV w/Inside/Outside TV Bracket
- Radiant Technology Package (foil in floor, roof, front & rear)
- 10 CU FT Stainless Steel Refrigerator IPO 8 CU FT Gas/Electric Stainless Steel Refrigerator
- (2) 10 CU FT Stainless Steel Refrigerators IPO (2) 8 CU FT Gas/Electric Stainless Steel Refrigerators (S343RSK, S343RE only)
- Wireless Backup Camera System – Observation
- Motion Security Sensor for Smart Arm Awning
- Wind Sensor for Smart Arm Awning
- Ground Control 3.0 TT Auto Leveling

K-Z Advantage Package (mandatory option)

Exterior

- Painted Front Cap
- 5-Sided Aluminum Framing
- Flip-Down 71" Storage Rack
- Alumitread® Entry Steps
- Friction-Hinged Entry Door
- Power Front Jack
- Power Awning w/LED Light Strip
- Key Alike Program for Baggage & Entry Doors
- Large Folding Grab Handle
- Exterior Speakers
- Aluminum Rims
- Spare Tire
- Amber Light Step
- Toylok
- Solar Prep
- Backup Camera Prep
- EquaFlex® Suspension
- Nitrogen-Filled Tires
- Battery Disconnect
- 20 LB LP Bottles w/Cover
- Frameless Windows
- Climate Package (heated, enclosed & insulated underbelly)

Interior

- 12V Dual USB Ports in Living Room
- Bed Storage System
- Plywood Bed Base w/Gas Struts
- (2) 6 1/2" Interior Speakers
- Stainless Steel Appliances
- Multi-Media Stereo w/Bluetooth
- DVD & NFC Wireless Connectivity
- Porcelain Foot-Flush Toilet
- (2) LED Motion Sensor Lights
- LED Light Strip above Slideout (main living room only)
- Push-Back Recliners
- Storage Bins under Dinette
- Residential Faucet
- Pillowtop Mattress
- Drop-In Cooktop w/Glass Cover
- Kitchen Skylight
- 12V USB Port in Bunk Area
- 22" Oven

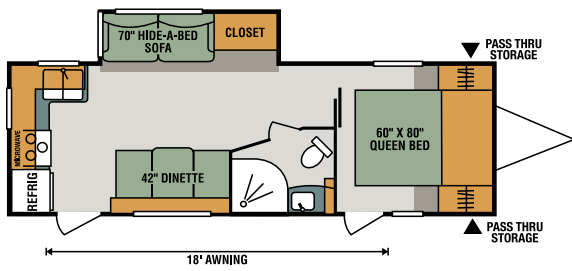
K-Z Convenience Package (mandatory option)

Exterior

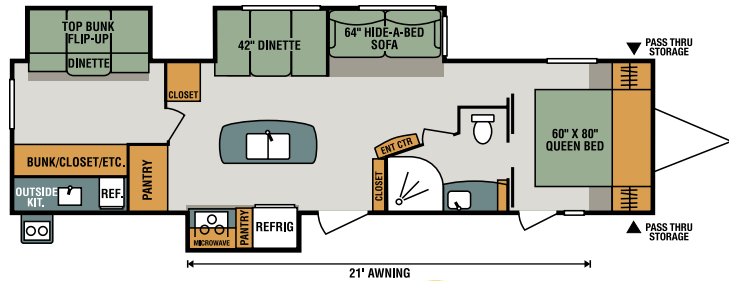
- New Front Profile w/82" Interior Sidewalls
- Smart Arm Awning w/Exterior Controls
- Front & Rear Electric Stabilizer Jacks
- Omnidirectional HDTV Antenna
- LED Lights in Exterior Speakers

Interior

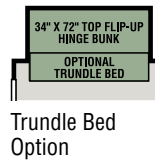
- Armstrong® ToughGuard® Linoleum
- Shaker-Style Hardwood Doors w/Frosted Glass Inserts
- Tri-Fold HAB Sofa
- LED TV
- Solid Surface Countertops w/Sink Cover
- 8 CU FT Gas/Electric Stainless Steel Refrigerator w/Temp. Control (2 – S343RSK, S343RE)
- Stainless Steel Residential Kitchen Faucet w/Pull-down Sprayer
- Stainless Steel Kitchen Sink
- Interior Control Switches on OH End Cabinet
- Dark Accent Trim on Ceiling, Corners & Entry Doors
- Residential Dinette Light



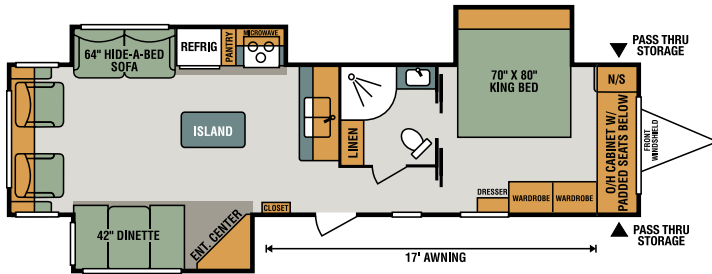
S251RK **NEW**



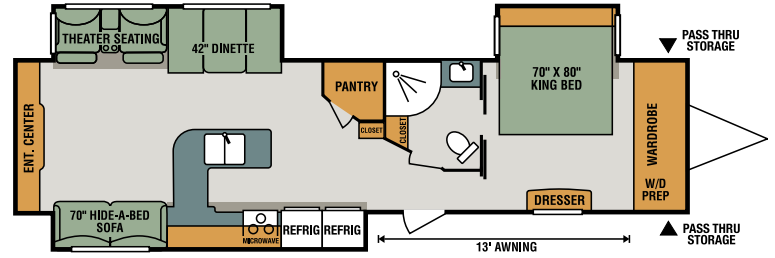
S333BHK **NEW**



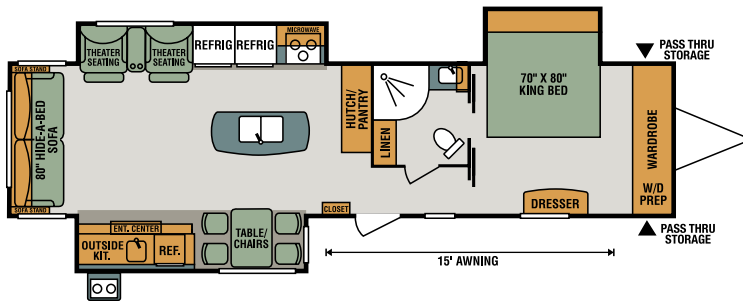
Trundle Bed Option



S333RLF **NEW**



S343RE **NEW**



S343RSK **NEW**

Travel Trailers

| | S251RK | S333BHK | S333RLF | S343RE | S343RSK |
|------------------------------------|--------|---------|---------|--------|---------|
| UVW (Unloaded Vehicle Weight)* | 5,590 | 8,130 | TBD | TBD | TBD |
| Dry Hitch Weight* | 600 | 860 | TBD | TBD | TBD |
| Dry Axle Weight* | 4,990 | 7,270 | TBD | TBD | TBD |
| NCC (Net Carrying Capacity) | 1,210 | 1,370 | TBD | TBD | TBD |
| GVWR | 6,800 | 9,500 | 9,500 | 9,500 | 9,500 |
| Interior Height | 82" | 82" | 82" | 82" | 82" |
| Exterior Height w/ A/C | 11' 1" | 11' 6" | 11' 6" | 11' 6" | 11' 6" |
| Exterior Width | 96" | 96" | 96" | 96" | 96" |
| Exterior Length | 28' 9" | 36' 11" | 36' 5" | 38' 0" | 37' 10" |
| Refrigerator (cu. feet) | 8 | 8 | 8 | 8 | 8 |
| Water Heater Cap. (gal. G/E w/DSI) | 6 | 6 | 6 | 6 | 6 |
| Fresh Water Cap. (gal.) | 40 | 40 | 40 | 40 | 40 |
| Waste Water Cap. (gal.) | 32 | 32 | 32 | 32 | 32 |
| Gray Water Cap. (gal.) | 60 | 56 | 32 | 32 | 32 |
| LP Gas Cap. (lbs.) | 40 | 40 | 40 | 40 | 40 |
| Furnace BTUs (1,000s) | 30 | 30 | 30 | 30 | 30 |
| Tire Size | 15" | 15" | 15" | 15" | 15" |
| Awning | 18' | 21' | 17' | 13' | 15' |

*This weight reflects the rolling average unit weight for each model. Your trailer weight will vary according to optional equipment.



985 N 900 W • Shipshewana, IN 46565
E-mail kz@kz-rv.com • www.kz-rv.com

Due to continual research and advances, manufacturer reserves the right to change specifications, design, price and equipment without notice, and assumes no responsibility for any error in this literature. Some items shown are not included as standard or optional equipment. ©2017KZ | 9/1/17 | 15M