



2011



TIFFIN MOTORHOMES
WHEREVER YOU GO, WE GO.

FULL BODY PAINT SCHEMES



Gold Coral



Maroon Coral



Silver Sand



Sunlit Sand



Rocky Mountain Brown

MECHANICAL SPECIFICATIONS

Automotive

STANDARD EQUIPMENT ON ALL MODELS:

- TorqShift® 5-speed Automatic Overdrive with Tow/Haul Mode
- Cruise Control
- Emergency Start Switch

FORD CHASSIS:	30 GA	32 CA	34 TGA	35 QBA
Engine - 362 HP	6.8 L V10	6.8 L V10	6.8 L V10	6.8 L V10
Torque (Lb. - Ft. Max Net)	457 @ 3250	457 @ 3250	457 @ 3250	457 @ 3250
GVWR	22,000 Lb.	22,000 Lb.	22,000 Lb.	22,000 Lb.
GAWR - Front	8,000 Lb.	8,000 Lb.	8,000 Lb.	8,000 Lb.
GAWR - Rear	15,000 Lb.	15,000 Lb.	15,000 Lb.	15,000 Lb.
GCWR	26,000 Lb.	26,000 Lb.	26,000 Lb.	26,000 Lb.
Wheel Base	208"	228"	242"	242"
Tire Size	235/80R22.5-GXRV	235/80R22.5-GXRV	235/80R22.5-GXRV	235/80R22.5-GXRV
Fuel Tank (Gallons)	75	75	75	75
Alternator Amps	175	175	175	175
Trailer Hitch Capacity	5,000 Lb.	5,000 Lb.	5,000 Lb.	5,000 Lb.

OVERALL:	30 GA	32 CA	34 TGA	35 QBA
Overall Length (Approximate)	31' 5"	32' 10"	34' 10"	35' 10"
Overall Height with Roof Air (Maximum)	12' 10"	12' 10"	12' 10"	12' 10"
Interior Height	83.5"	83.5"	83.5"	83.5"
Overall Width	101"	101"	101"	101"
Interior Width	96"	96"	96"	96"
Fresh Water (Gallons)	70	70	70	70
Black Water (Gallons)	50	50	50	50
Grey Water (Gallons)	66	66	66	66
LPG Tank (Gallons; can only be filled to 80% capacity)	24	24	24	24
Minimum Garage Height	13'	13'	13'	13'
Basement Storage (Cubic Feet - Approximate)	57	67	69	69

Structural

STANDARD EQUIPMENT ON ALL MODELS:

- One-piece Molded Fiberglass Roof Cap
- Laminated Floor, Sidewall & Roof
- Steel / Aluminum Reinforced Structure

Exterior

STANDARD EQUIPMENT ON ALL MODELS:

- Fiberglass Front & Rear Caps
- Fiberglass Roof Cap
- Tinted One-piece Windshield
- 5.5 kw Onan® Generator
- Two 13,500 BTU High Profile Roof A/Cs (High Efficiency)
- Quiet A/C Roof-ducted System
- Double Electric Step
- 1/4" Thick Single Pane Windows
- Park Telephone Ready
- Horizontal Mounted Wipers
- Heated Power Mirrors
- Exterior Patio Light
- Slide-out Awning(s)
- Hydraulic Automatic Leveling Jacks
- BASF Full Body Paint with Front Cap Protective Film
- Two 6 V Auxiliary Batteries
- Outside Shower
- Convenient Access Doors with Gas Shocks
- Ridged Long-life Storage Boxes
- Single Handle Lockable Storage Door Latches
- Heated Water & Holding Tank Compartments
- Digital TV Antenna
- Cable Ready TV
- Side-view Cameras Activated by Turn Signals
- Power Patio Awning with Aluminum Weather Shield
- Front Cap Rock Guard Protection
- Water Heater Bypass System
- 50 Amp Service
- Black Holding Tank Flush System
- Exterior Rinse Hose / Shower
- Back-up Monitor
- 110 V Exterior Receptacle
- 110 V / 12 V Converter
- Undercoating
- Roof Ladder
- External Tripod Satellite Hook-up

AVAILABLE OPTIONS:	30 GA	32 CA	34 TGA	35 QBA
7.0 kw Onan® Generator	○	○	○	○
Automatic Satellite	○	○	○	○
One 15,000 BTU High Profile Roof A/C with Heat Pump	○	○	○	○
CB Antenna	○	○	○	○

Driver's Compartment

STANDARD EQUIPMENT ON ALL MODELS:

- Entry Floor Light
- Step Switch & 12 V Disconnect Switch
- Non-power Cloth Driver & Passenger Seats
- Lighted Instrument Panel
- CD Player & AM/FM Stereo
- Passenger Slide Tray / Drawer
- 12 V Dash Receptacle
- Tilt Steering Wheel
- Dual Dash Fans
- Power Windshield Solar / Privacy Shade
- Fire Extinguisher
- Snack / Beverage Tray

AVAILABLE OPTIONS:	30 GA	32 CA	34 TGA	35 QBA
Power Cloth Driver & Passenger Seats	O	O	O	O
Power Halo Leather Driver & Passenger Seats	O	O	O	O
Driver's Door with Power Window	O	O	O	O
32" Front Overhead TV	S	O	O	O

Living Area/Dinette

STANDARD EQUIPMENT ON ALL MODELS:

- Booth Dinette with Large Pullout Storage Drawers
- Cloth DE Sofa Bed
- Decorative Wall Hanging

AVAILABLE OPTIONS:	30 GA	32 CA	34 TGA	35 QBA
Swivel Rocker	NA	S	S	S
Leather DE Sofa Bed	O	O	O	O
Cloth Air Coil Hide-A-Bed Sofa	NA	O	O	O
Halo Leather Air Coil Hide-A-Bed Sofa	NA	O	O	O
Freestanding Dinette with Cabinets	NA	O	O	O
37" Midsection TV in Entertainment Center	NA	S	S	S
Home Theater Surround Sound System (Includes DVD Player)	O	O	O	O
DVD Player	O	O	O	O

Kitchen

STANDARD EQUIPMENT ON ALL MODELS:

- Single Lever Bronze Sink Faucet
- Spray Rinser at Sink Faucet
- Under Counter Mount Double Bowl Stainless Steel Sink
- Solid Surface Countertops
- Solid Surface & Tile Backsplash
- 3-burner Cooktop with Gas Oven
- Microwave with Exterior Venting
- 8 Cubic Foot Refrigerator / Freezer

AVAILABLE OPTIONS:	30 GA	32 CA	34 TGA	35 QBA
Convection / Microwave	O	O	O	O
Icemaker in Freezer	O	O	O	O
Solid Wood Refrigerator Panels	O	O	O	O

Bath

STANDARD EQUIPMENT ON ALL MODELS:

- Medicine Cabinet
- Skylight in Shower
- Water Pump Switch
- Fantastic® Fan with Wall Switch (Water Closet Only)
- Tile Backsplash
- Fiberglass One-piece Molded Shower
- Bronze Vanity Faucet

Bedroom

STANDARD EQUIPMENT ON ALL MODELS:				
• Wardrobe with Automatic Light	• Innerspring Queen Mattress (60" x 80")	• Mirrored Wardrobe Doors	• Wall-to-wall Carpeting	
• Bed Comforter with Throw Pillows	• Lift Bed with Full Storage	• Solar / Privacy RollEase® Shades		

AVAILABLE OPTIONS:	30 GA	32 CA	34 TGA	35 QBA
32" TV	O	O	O	O
Bunk Beds (30" x 72") with Bunk Ladder	NA	NA	NA	S
DVD Monitors in Bunk	NA	NA	NA	O
Tile Flooring in Bedroom	O	O	O	O

General Interior

STANDARD EQUIPMENT ON ALL MODELS:				
• Soft Touch Vinyl Ceiling	• Ball Bearing Drawer Slides	• Smoke Detector		
• Raised Panel Hardwood Cabinet Doors	• Scotchgard® Treated Carpet & Fabrics	• LPG Leak Detector		
• Medium Alderwood Solid Cabinet Doors & Drawer Fronts	• Solar / Privacy RollEase® Shades	• Tank Level Monitor System		
• Solid Wood Cabinet Fascias	• Power Fantastic® Fans	• 6-gallon DSI Gas / Electric Water Heater		
• Wall-to-wall Vinyl Tile Flooring in Living Room, Kitchen & Bath	• Carbon Monoxide Detector			

AVAILABLE OPTIONS:	30 GA	32 CA	34 TGA	35 QBA
Central Vacuum Cleaner	O	O	O	O
One 30,000 BTU Ducted Furnace	S	NA	NA	NA
Two 30,000 BTU Ducted Furnaces	NA	NA	S	S
One 35,000 BTU Ducted Furnace	NA	S	NA	NA
Cherry Bark Solid Cabinet Doors & Drawer Fronts	O	O	O	O
English Chestnut Solid Cabinet Doors & Drawer Fronts	O	O	O	O

All options may not be available in all models. Because of progressive improvements, specifications, standard & optional equipment are subject to change without notice or obligation.

INTERIOR SPECIFICATIONS



Medium Alderwood



English Chestnut



Cherry Bark

	BEDROOM MAIN & ACCENT	LIVING AREA SOFA & ACCENT	DINETTE	CARPET	TILE	COUNTERTOP
Flint						
Marble						
Pecan						

Allegro cabinet doors are made of solid wood. Cabinet finishes are available in combination with any fabric scheme. Options may not be available for every model. Specifications and standard or optional equipment subject to change without notice or obligation.

BEDROOM SUITE FABRIC



Flint



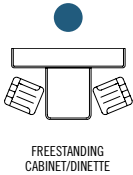
Marble



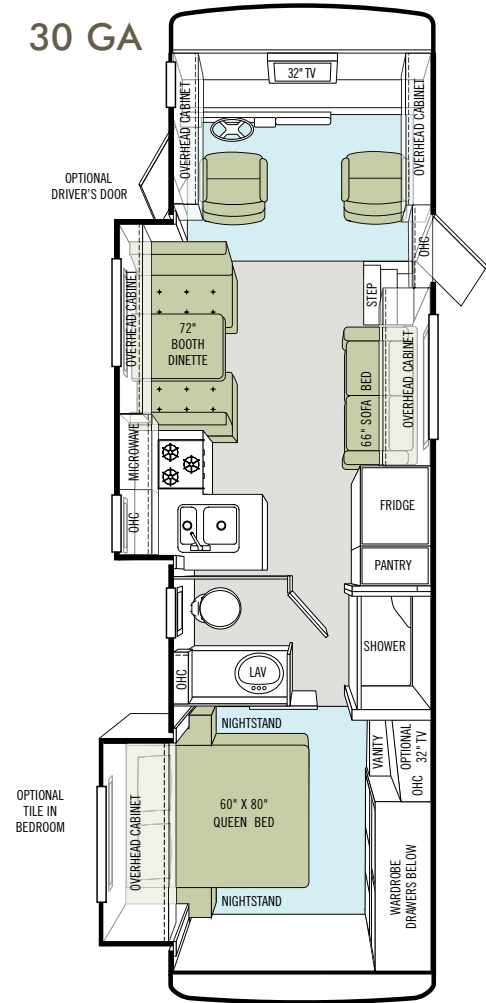
Pecan

FLOOR PLANS

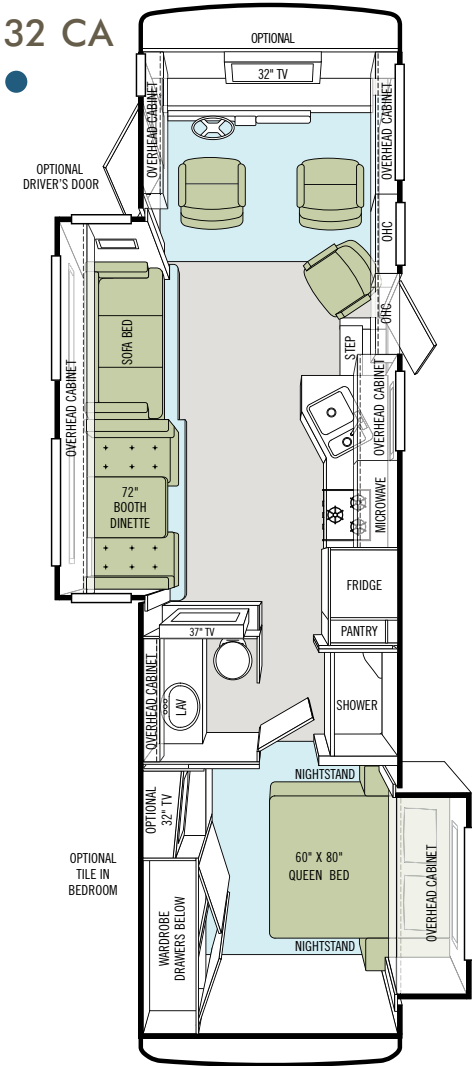
Option Key



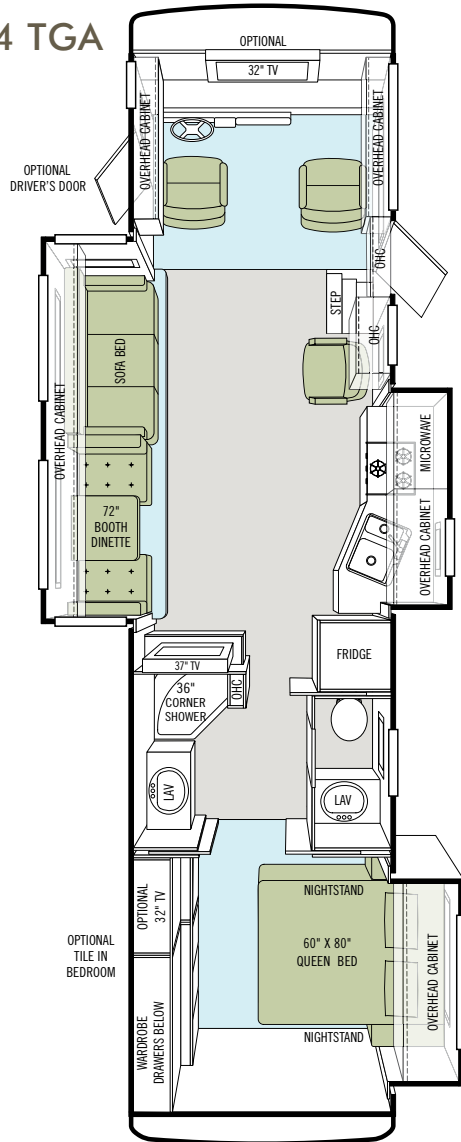
30 GA



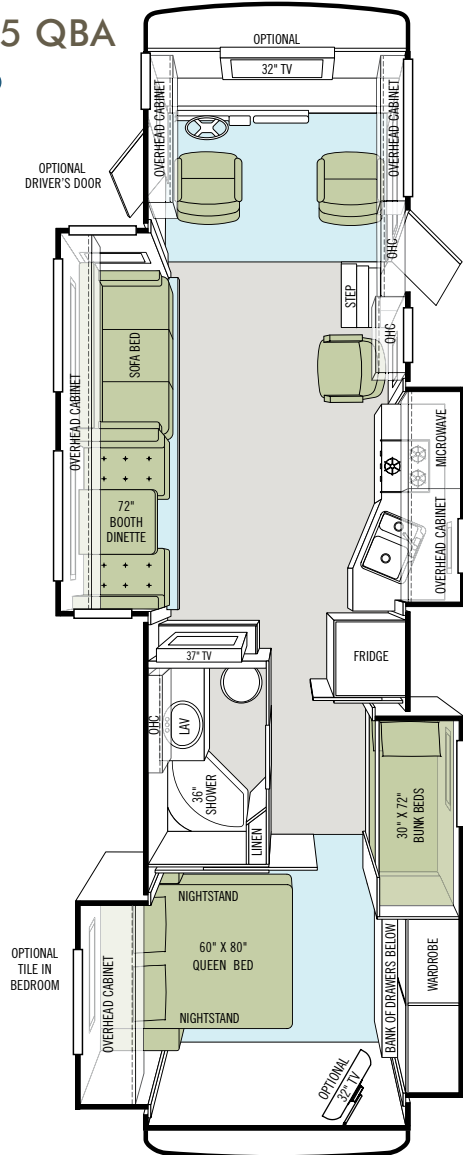
32 CA



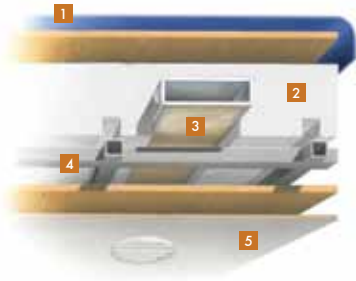
34 TGA



35 QBA

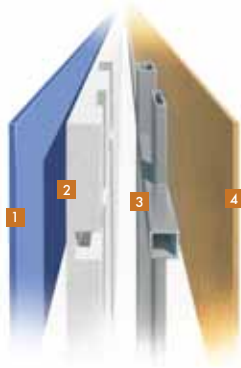


CONSTRUCTION SPECIFICATIONS



Roof

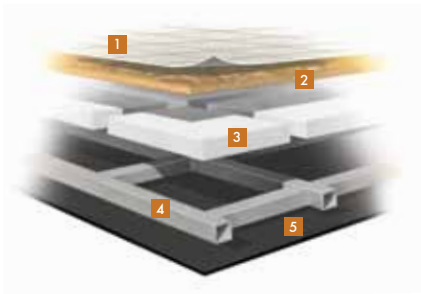
1. One-piece, moisture resistant molded fiberglass roof cap provides insulation and strength and prevents water intrusion
2. 5 1/2" formed insulation
3. Quiet Air Cooling System with return air and foil-wrapped cooling exhaust ducts
4. Durable, tubular aluminum roof skeleton
5. Easy-to-clean soft touch vinyl ceiling panel



Sidewall

1. Gel-coat fiberglass outside wall panel
2. High-performance thermal insulation
3. Durable, yet lightweight, tubular aluminum wall skeleton
4. Decorative inside wall panel

All sidewalls are approximately 2" thick



Floor

1. Vinyl tile floor bonded to high-impact oriented strand board
2. High-level engineered oriented strand board
3. High-performance thermal insulation
4. Durable, tubular floor skeleton
5. Woven moisture barrier material

10-YEAR LIMITED UNITIZED CONSTRUCTION WARRANTY The structural integrity of the entire coach is guaranteed for the next 10 years. Warranty includes wall separation and inner frame weakness.

5-YEAR LIMITED LAMINATION WARRANTY We guarantee against all exterior fiberglass delamination or wall separation.



TIFFIN MOTORHOMES

WHEREVER YOU GO, WE GO.

105 2ND STREET NW RED BAY, AL 35582 CALL 256.356.8661 FAX 256.356.8219
FOR PARTS AND SERVICE CALL 256.356.0261

Phaeton®, Allegro®, Allegro Breeze®, Allegro RED®, Allegro Bus®, Zephyr®, Roughing It Smoothly®, Open Road® and Pusher® are registered trademarks of Tiffin Motorhomes. For more specifics on what makes a Tiffin Motorhome, go to tiffinmotorhomes.com