

# SUNSET TRAIL

RESERVE / SUPER LITE

## SUNSET TRAIL >>>



**RESERVE FIFTH WHEEL**  
THE MOST INNOVATIVE AND LIGHT WEIGHT FIFTH WHEEL ON THE MARKET



**RESERVE TRAVEL TRAILER**  
CONTEMPORARY STYLING AND PACKED WITH USER-FRIENDLY FEATURES



**SUPER LITE FIFTH WHEEL**  
SPACIOUS INTERIORS AND LOTS OF STORAGE IN A LIGHTER TRAILER



**SUPER LITE TRAVEL TRAILER**  
YOU DON'T NEED LARGE TOW VEHICLES TO TAKE IT ALL WITH YOU



### MADE IN THE USA

PROUD TO BE MADE IN THE UNITED STATES OF AMERICA! ALL CROSSROADS PRODUCTS, INCLUDING SUNSET TRAIL MODELS, ARE HAND-CRAFTED BY A SEASONED MIDWEST WORKFORCE DEDICATED TO QUALITY AND INTEGRITY. THE BEST ONLY GETS BETTER WHEN YOU CONSIDER THE METICULOUS ATTENTION TO DETAIL, QUALITY OF COMPONENTS AND VALUE AN AMERICAN MADE PRODUCT BRINGS. YOU CAN CHECK OUT OUR FULL LINE OF PRODUCTS BY VISITING [CROSSROADSRV.COM](http://CROSSROADSRV.COM) TODAY.

**MORE >>>** Go see more details on construction, features & benefits at: [crossroadsrv.com](http://crossroadsrv.com)

**CROSSROADS**<sup>®</sup>  
RECREATIONAL VEHICLES

YOUR LOCAL CROSSROADS DEALER:

**CROSSROADS**<sup>®</sup>  
RECREATIONAL VEHICLES

1140 W. LAKE STREET ☘ TOPEKA, IN 46571 ☘ PH 260 593-3850 ☘ FX 260 593-2088



# SUNSET TRAIL

The purest form of “simple” is enjoyment of family, camping and the great outdoors! Every Sunset Trail camping trailer is built with your satisfaction in mind. The features and amenities you want all come together in a Sunset Trail.



## UNIQUE FRONT NOSE SLIDE ROOM



This innovative slide room feature is standard on select fifth wheel floor plans. It adds generous amounts of space in the bedroom area. The front nose slide room has been tested in the field and seals tight. See your local Sunset Trail dealer for a tour.



Exterior captions:  
Lorem ipsum dolor sit.  
Ipsum dolor sit. Lorem  
Lorem ipsum dolor sit.  
Ipsum dolor sit. Lorem  
Lorem ipsum dolor sit.  
Ipsum dolor sit. Lorem  
ipsum sit. Lorem Lorem  
ipsum dolor sit. Ipsum dolor  
sit. Lorem ipsum dolor dolor  
sit. Lorem Lorem ipsum  
dolor sit. Ipsum dolor sit.

# RESERVE

Reserve models provide a high-end feel at an affordable price. They are highly styled and come loaded with upscale equipment and appointments. Solid surface countertops, wood cabinetry, plush furniture and barrelled ceilings are all standard features!



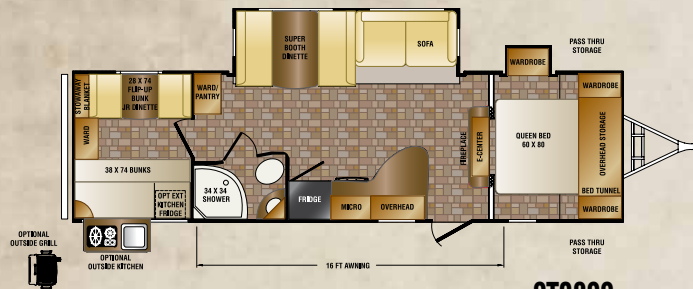
## MORE LIVING SPACE

You'll discover simple, yet obvious deep convictions in the way each Sunset Trail is thoughtfully designed. Contemporary styling and packed with features. Features like LCD TV's, outside entertainment centers on certain models, solid surface counter tops, spacious rooms and all of the amenities of home. Reserve models provide a high-end feel at an affordable price. Slide rooms are well thought out for a spacious, luxurious, yet practical environment.



# RESERVE

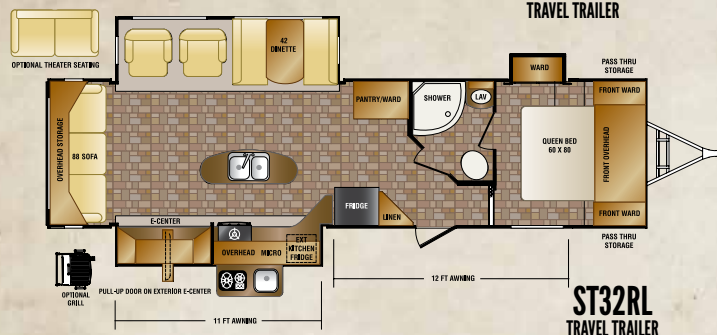
Leave the complexity of life behind when you set out for your next adventure in a Sunset Trail Reserve. Choose from one of our many luxury floor plans designed to fit your lifestyle and your family needs.



**ST29SS**  
TRAVEL TRAILER



**ST30RE**  
TRAVEL TRAILER



**ST32RL**  
TRAVEL TRAILER



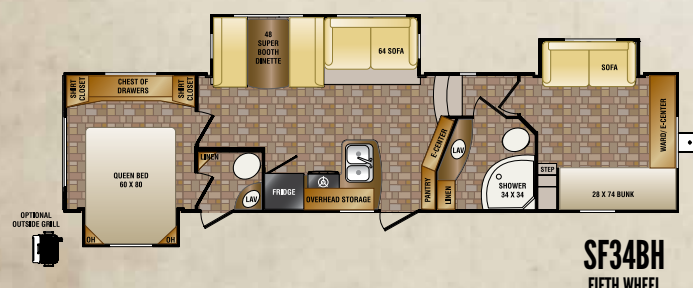
**ST33BD**  
TRAVEL TRAILER



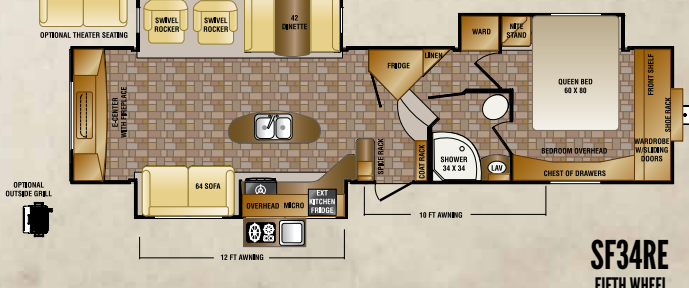
**SF26RB**  
FIFTH WHEEL



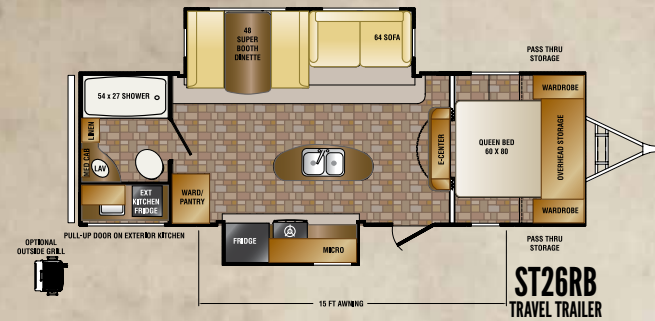
**SF28BH**  
FIFTH WHEEL



**SF34BH**  
FIFTH WHEEL



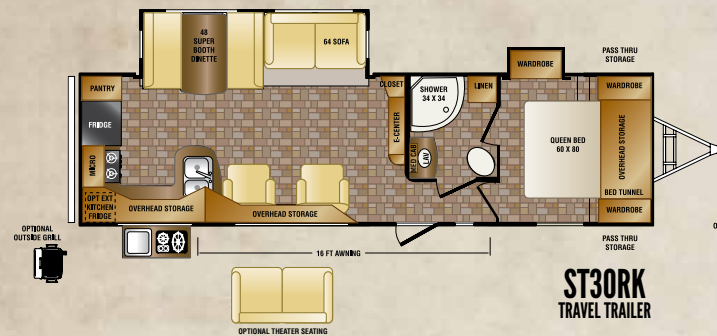
**SF34RE**  
FIFTH WHEEL



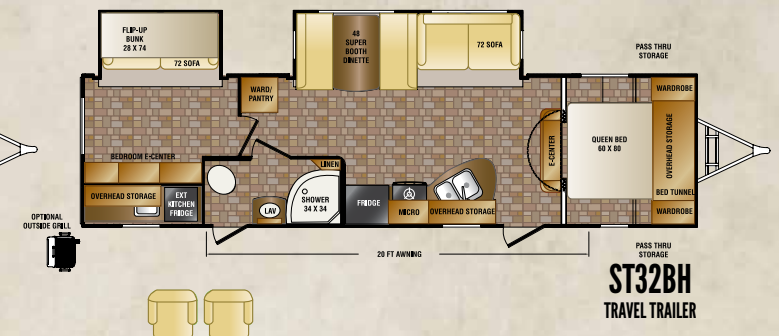
**ST26RB**  
TRAVEL TRAILER



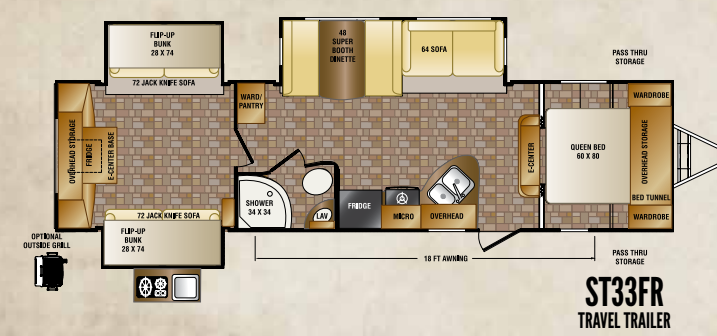
**ST28BH**  
TRAVEL TRAILER



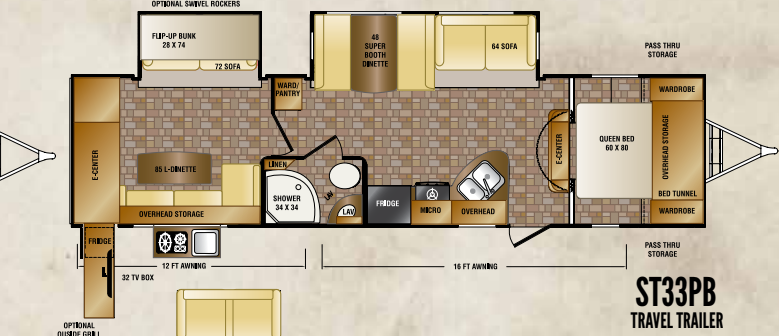
**ST30RK**  
TRAVEL TRAILER



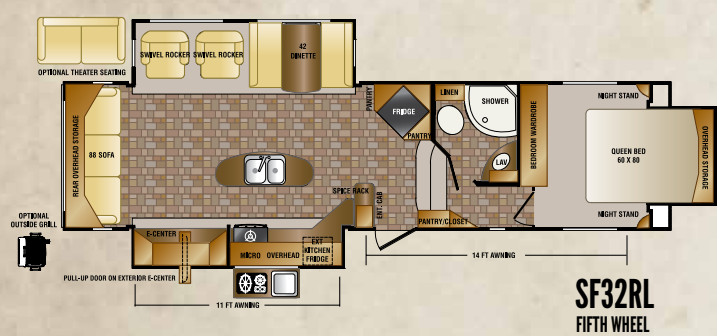
**ST32BH**  
TRAVEL TRAILER



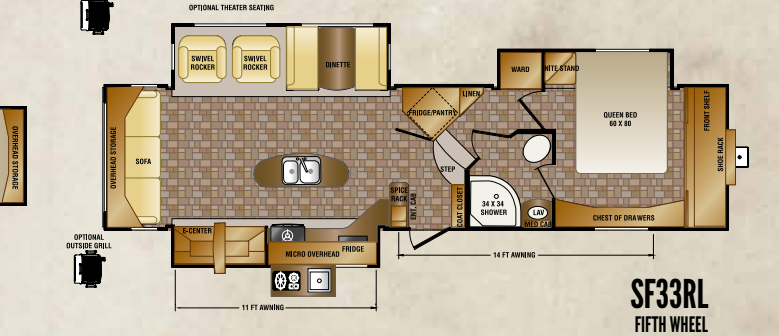
**ST33FR**  
TRAVEL TRAILER



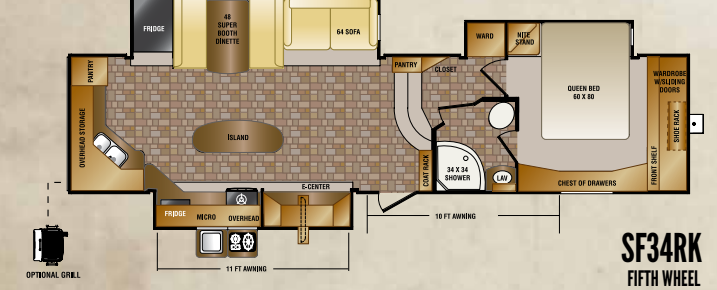
**ST33PB**  
TRAVEL TRAILER



**SF32RL**  
FIFTH WHEEL



**SF33RL**  
FIFTH WHEEL



**SF34RK**  
FIFTH WHEEL

SUNSET TRAIL	ST26RB	ST28BH	ST29SS	ST30RE	ST30RK	ST32BH	ST33FR	ST32RL
SHIPPING WEIGHT	6401	6609	6284	6288	6346	7204	7338	7573
GVWR	9542	9592	9538	9500	9462	9714	9748	9798
CARRYING CAP	3141	2983	3254	3212	3116	2510	2410	2225
HITCH WEIGHT	742	792	738	700	662	914	948	998
AXLE WEIGHT	5659	5817	5546	5588	5684	6290	6390	6575
EXT LENGTH	30' 1"	32' 2"	33' 5"	34' 5"	34' 5"	35' 11"	35' 11"	35' 11"
EXT. HEIGHT W/AC	11' 2"	11' 2"	11' 2"	11' 2"	11' 2"	11' 2"	11' 4"	11' 4"
FRESH WATER	40	40	40	40	40	40	40	40
BLACK WATER	40	40	40	40	40	40	40	40
GRAY	80	80	40	40	80	40	40	80
TIRE SIZE	225/75R15D	225/75R15D	225/75R15D	225/75R15D	225/75R15D	225/75R15D	225/75R15D	225/75R15D

# FLOOR PLANS

# SUPER LITE

Super Lites are not light on amenities. Stay comfortably and safely out of the elements when you take all of the accommodations of home along in your Sunset Trail. Plenty of quality living, sleeping and family room. There's a high-end feel to these entry-level priced travel trailers. That's by design!



## ALL OF THE AMENITIES OF HOME



A standard large screen LED TV and bluetooth CD/DVD stereo entertainment center will make you feel at home. So will our large 8 cu/ft refrigerator, microwave, range with oven, beautiful interior decors and wood cabinetry. All designed with your comfort in mind.





# CONSTRUCTION

## NEED REAL INFO

### FLOOR -R42 TOTAL INSULATION VALUE

- Shaw Residential Stain Guard Carpet
- Residential Carpet Pad
- 18" Tarket Tile Flooring
- 5/8" Tongue & Groove Plywood Floor
- 5. 3" Welded Aluminum Frame, 11" on Center
- 6. 1 Layer Flex Foil -R14 Insulation
- 7. 2 Layers Batten Insulation -R14
- 8. Darco Moisture Barrier
- 9. F.I.T. Frame
- 10. 1 Layer Flex Foil -R14 Insulation
- 11. 1 Piece Corrugated Underbelly

### BATH DECK -R21 TOTAL INSULATION VALUE

- 12. 5/8" Tongue & Groove Plywood
- 13. 3" Aluminum Frame
- 14. Flex Foil & R7 Batten Insulation
- 15. Finished and Insulated Pass-Thru Ceiling

### ROOF -R28 TOTAL INSULATION VALUE

- 16. Alpha Ply Roofing
- 17. 3/8" Plywood Decking
- 18. 1 Layer Flex Foil -R14 Insulation
- 19. Stamped Steel Roof Trusses
- 20. 2 Layers Batten Insulation -R14
- 21. Interior Ceiling Board
- 22. Main 15,000 BTU A/C Located in Rear
- 23. Optional 2nd 15,000 BTU

A/C Located Mid Ship  
Optional Heat Pumps on One or Both A/Cs

### SIDEWALLS -R9 TOTAL INSULATION VALUE

- 24. High Gloss Gel Coat Exterior
- 25. 2" Welded Aluminum Frame
- 26. Sanded Block Foam Insulation -R9
- 27. EGS Steel Backers for Cabinets
- 28. Interior Wall Board
- 29. Frameless Windows, Optional Dual Pane

### FRONT CAP -R21 TOTAL INSULATION VALUE

- 30. 2 Layers Batten Insulation -R14
- 31. 1 Vertical Layer of Flex Foil -R7 Insulation
- 32. Aerodynamic Fiberglass Front Cap

### REAR CAP -R21 TOTAL INSULATION VALUE

- 33. 2 Layers Batten Insulation -R14
- 34. 1 Vertical Layer of Flex Foil -R7 Insulation
- 35. Fiberglass Rear Cap

### SLIDE-OUT

- 36. Laminated Outside Wall -R9
- 37. Sidewalls - 1 Layer Batten, 1 Layer Flex Foil -R14 Insulation
- 38. Roof - 1 Layer Batten, 1 Layer Flex Foil -R21 Insulation
- 39. Floor - 1 Layer Flex Foil -R14 Insulation

Could work in TT cutaway too but .psd was not sent to us yesterday? Only 5th see below. Now that we're so close to rvia show, i'd suggest developing construction stories for this and others in more detail after the show printing.



# STANDARDS & OPTIONS

## RESERVE

### INTERIOR FEATURES

- Microwave
- Range with oven
- 32" or 40" LED TV
- 8 cu ft. double door refrigerator
- Jensen® Bluetooth CD/DVD/ stereo
- Designer privacy shades
- Skylight in shower
- Foot flush porcelain toilet
- Detector for smoke, carbon monoxide, and LP gas
- Fire extinguisher
- Non-cracking stain resistant vinyl flooring
- Magnetized fridge door
- Drawers under dinette
- Barreled / Interior Ceiling
- Tri-fold hide-a-bed sofa
- Solid surface countertops
- Fireplace
- 60" x 80" queen bed w/ gelcore memory foam mattress

### EXTERIOR FEATURES

- Aluminum wheels
- 6 gallon DSI gas/electric water heater

### Black tank flush

- Tinted windows
- Outside speakers
- 15,000 BTU air conditioner
- Electric lighted awning
- Power stab jacks
- Power tongue jack
- Swing-out grab handle
- Secure stance EZ Lube axles
- Nitrogen filled radial tires
- Continu.us TV antenna
- Satellite prep
- Enclosed underbelly
- Strutted entry doors
- Bumper mount grill
- Spare tire
- Blue LED front cap light
- Detachable power cord
- Pass-through storage area w/ power stabilizer jack switch panel
- Outside shower

### AVAILABLE UPGRADES

- Free standing dinette table w/ 4 chairs
- End table (ST30RK)
- Fantastic fan with rain sensor

### Upgraded insulation

- 50 amp service with 2nd air conditioner prep
- Additional 13,500 BTU air conditioner
- 30# tanks
- Sink covers
- 29" LED TV (exterior)
- 32" LED TV (bedroom)
- Theater seating (ST30RE, ST30RK, SF32RL, ST32RL, SF33RL, SF34RE)
- Sofa lounger (ST26RB)
- Ceiling fan (5W only)
- Skylight in kitchen (SF26RB, SF28BH, SF32RL, SF34RK, SF34RE, ST26RB, ST28BH, ST31SS, ST32RL)
- ABS hitch cover (5W only)
- 10 gallon water heater (5W only - SF32RL, SF33RL, SF34RK, SF34RE, SF34BH)
- Outside cook center (replaces under bunk storage, ST28BH, ST29SS)
- Solid enclosure for radius shower

## SUPER LITE

### INTERIOR FEATURES

- Microwave
- Range with oven
- 29" or 32" LED TV
- 8 cu ft. double door refrigerator
- Jensen® Bluetooth CD/DVD/ stereo
- Designer privacy shades
- Skylight in shower
- Foot flush porcelain toilet
- Detector for smoke, carbon monoxide, and LP gas
- Fire extinguisher
- Non-cracking stain resistant vinyl flooring
- Magnetized fridge door
- Drawers under dinette
- 60" x 80" queen bed w/ gelcore memory foam mattress

### EXTERIOR FEATURES

- Aluminum wheels
- Black tank flush
- 6 gallon DSI gas/electric water heater

### Tinted windows

- Outside speakers
- 15,000 BTU air conditioner
- Electric lighted awning
- Manual stab jacks
- Swing-out grab handle
- Secure stance EZ Lube axles
- Nitrogen filled radial tires
- Continu.us TV antenna
- Satellite prep
- Enclosed underbelly
- Strutted entry doors
- Bumper mount grill
- Spare tire
- Blue LED front light
- Detachable power cord
- Pass-through storage area
- Outside shower
- Front diamond plating

### AVAILABLE UPGRADES

- Free standing dinette table w/ 4 chairs (replaces dinette booth, ST25ORB, ST270BH, ST290RL, ST290QB, ST300BH, SF270BH, SF280RL)

### Fantastic fan with rain sensor

- Upgraded insulation
- 50 amp service with 2nd air conditioner prep (ST25ORB, ST270BH, ST290RL, ST290QB, ST300BH, SF270BH, SF270RL, SF280RL)
- Additional 13,500 BTU air conditioner
- 30# tanks
- Sink covers
- 29" LED TV (exterior)
- Ceiling fan (5W only)
- ABS hitch cover (5W only)
- Outside cook center (replaces under bunk storage, ST270BH, ST290QB, ST240BH, SF270BH)
- Power stab jacks
- Power tongue jack
- Tri-fold hide-a-bed sofa
- Skylight in kitchen (SF270BH)
- Theater seating (ST290RL SF280RL)
- Solid enclosure for radius shower

DISCLAIMER: Product information is as accurate as possible at the date of publication of this brochure. All features, floorplans, and specifications in this brochure are subject to change without notice. Please also consult CrossRoads RV's website at [www.crossroadsv.com](http://www.crossroadsv.com) for more current product information and specifications. Tow Vehicle Disclaimer. CAUTION: Owners of CrossRoads recreational vehicles are solely responsible for the selection and proper use of tow vehicles. All customers should consult with a motor vehicle manufacturer or their dealer concerning the purchase and use of suitable tow vehicles for CrossRoads RV products. CrossRoads RV disclaims any liability or damages suffered as a result of the selection, operation, use or misuse of tow vehicle. CROSSROADS RV'S LIMITED WARRANTY DOES NOT COVER DAMAGE TO THE RECREATIONAL VEHICLE OR TOW VEHICLE AS A RESULT OF THE SELECTION, OPERATION, USE OR MISUSE OF THE TOW VEHICLE.

