



**RECREATIONAL  
VEHICLES**

# SPORTSMEN SE

## TRAVEL TRAILERS

### STANDARDS

- KZ Exclusive Tough Shield Exterior Metal
- 1-Piece, Seamless, Walk-on, Tufflex Roofing Material w/15-Year Warranty
- 3/8" Fully Walk-On Roof Decking
- Radius Truss Roof Rafter
- Awning w/Drip Rail & Spouts
- R-7 Insulation
- Radius Entry Door
- Extra-Large Radius Baggage Doors
- Tinted Windows
- Diamond Plate Rock Guard
- Rear Bumper w/Sewer Hose Storage
- (2) 20# LP Bottles
- 30 AMP Service
- Cable Hookup
- Digital TV Antenna w/Booster
- 13,500 BTU A/C
- Water Heater Bypass Kit
- 3-Burner Cooktop
- Range Hood w/12V Light & Exhaust Fan
- Microwave w/Turntable
- Large Overhead Cabinets
- Roller Ball Bearing Drawer Guides
- LED Interior Lighting
- Linoleum Throughout
- Mini Blinds
- Monitor Panel
- Power Vent in Bath
- Reversible Quilted Comforter
- Shower Surround

### OPTIONS

- 15,000 BTU A/C IPO 13,500 BTU A/C
- Low Pro 13,500 A/C IPO 13,500 (271BHSE & smaller)

- Low Pro 15,000 A/C IPO 13,500 (271BHSE & smaller)
- 7 CU FT Gas/Electric Refrigerator IPO 10 CU FT 12V Refrigerator
- Outside Kitchen (271BHSE, 301BHSE, 312BHSE)
- 50 Amp Service w/2nd A/C Prep (301/312)
- Ottoman w/Storage (N/A 230BHSE, 240FBSE, 260BHSE)
- Sink Cover
- Aluminum Wheels

### KZ ADVANTAGE PACKAGE

#### (MANDATORY OPTION) EXTERIOR

- New Aerodynamic Front Profile w/Smooth Metal Front
- Three-Toned Exterior Metal
- Friction-Hinged Entry Door
- Key-Alike Program for Entry & Baggage Doors
- Exterior Speakers
- Spare Tire & Carrier
- Nitrogen-Filled Tires
- (4) Stabilizer Jacks
- LP Bottle Cover
- Backup Camera Prep
- Solar Prep
- Battery Disconnect
- Leash Latch w/Bonus Beverage Opener

#### INTERIOR

- Jackknife Sofa w/Center Console
- Drop-In Cooktop w/Glass Cover & Oven
- (2) 12V USB Ports in bedroom
- Plywood Bed Base
- Upper Bunk Windows (select floorplans)

- Seamless Countertops w/Deep Undermount Stainless Steel Kitchen Sink
- Foot-Flush Toilet
- (2) 6.5" Interior Speakers
- Multi-Media Sound Bar Stereo w/Bluetooth, HDMI and USB Charge
- Wider Pocket/Passage Interior Doors
- Color Accented Shower Walls
- Bathroom Shelf w/Towel Hooks

### KZ CONVENIENCE PACKAGE

#### (MANDATORY OPTION) EXTERIOR

- Power Awning w/LED Light Strip
- Magnetic Catches for Baggage Doors
- Battery Disconnect Switch
- Omnidirectional HDTV Antenna w/Wi-Fi Prep
- LED Lights in Exterior Speakers

#### INTERIOR

- Residential-Grade Linoleum
- 10 CU FT Refrigerator 12V w/Dual Temperature Control
- Stainless Steel Residential Kitchen Faucet
- Interior Control Switches on Overhead End Cabinet w/Convenience Center for Switches
- Dark Accent Trim on Corners/Entry Doors
- Electric Outlet in Bunk Area
- Stainless Steel Microwave

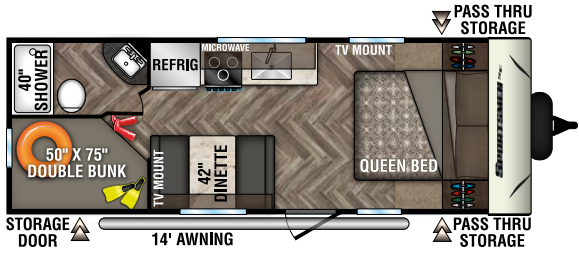
### 2020 DÉCOR

HAZELNUT

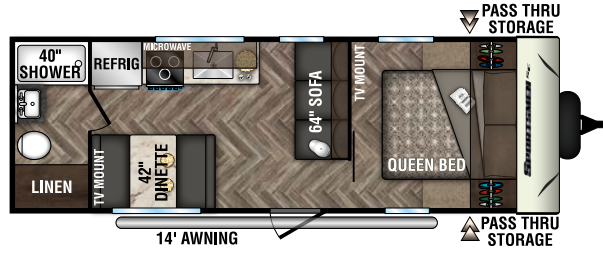
Sportsmen SE Travel Trailers	230BHSE	240FBSE	241RLSE	260BHSE	271BHSE	301BHSE	301DBSE	312BHSE
UVW (Unloaded Vehicle Weight)*	4,340	4,470	5,270	4,800	5,720	6,100	6,010	7,110
Dry Hitch Weight*	540	520	590	590	590	880	890	910
Dry Axle Weight*	3,800	3,950	4,680	4,210	5,130	5,220	5,120	6,200
NCC (Net Carrying Capacity)	2,660	2,530	1,730	2,200	1,280	1,900	1,990	1,690
GVWR	7,000	7,000	7,000	7,000	7,000	8,000	8,000	8,800
Interior Height	78"	78"	78"	78"	78"	78"	78"	78"
Exterior Height w/ A/C	10' 4"	10' 4"	10' 8"	10' 8"	10' 7"	10' 8"	10' 8"	10' 8"
Exterior Width	96"	96"	96"	96"	96"	96"	96"	96"
Exterior Length	25' 6"	26' 6"	28' 6"	28' 11"	31' 3"	33' 1"	33' 1"	36' 1"
Refrigerator (cu. feet)	10	10	10	10	10	10	10	10
Water Heater Cap. (gal. G/E w/DSI)	6	6	6	6	6	6	6	6
Fresh Water Cap. (gal.)	40	40	40	40	40	40	40	40
Waste Water Cap. (gal.)	32	32	32	32	32	32	32	32
Gray Water Cap. (gal.)	32	32	32	32	32	32	32	32
LP Gas Cap. (lbs.)	40	40	40	40	40	40	40	40
Furnace BTUs (1,000s)	20	30	30	30	30	30	30	30
Tire Size	14"	14"	14"	14"	14"	15"	15"	15"
Awning	14'	14'	17'	15'	20'	16'	16'	19'

\*This weight reflects the rolling average unit weight for each model. Your trailer weight will vary according to optional equipment.

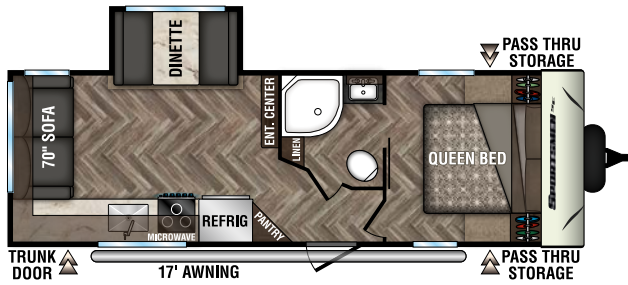
# 2020 SPORTSMEN SE TRAVEL TRAILERS



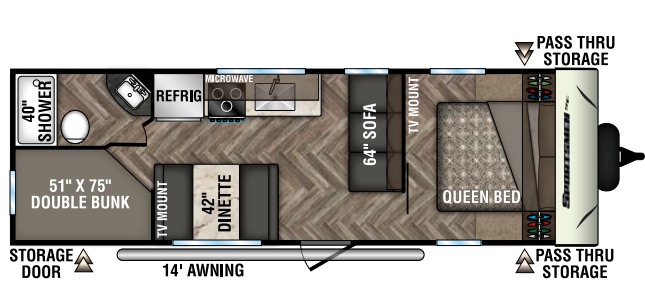
230BHSE



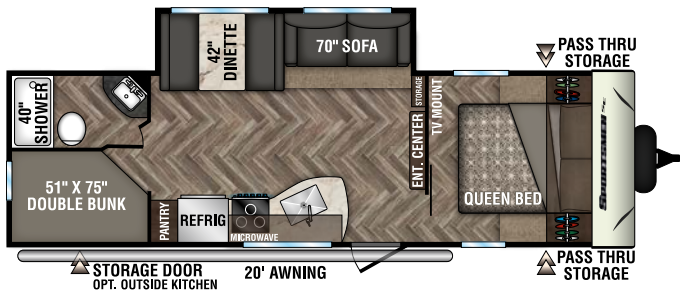
240FBSE



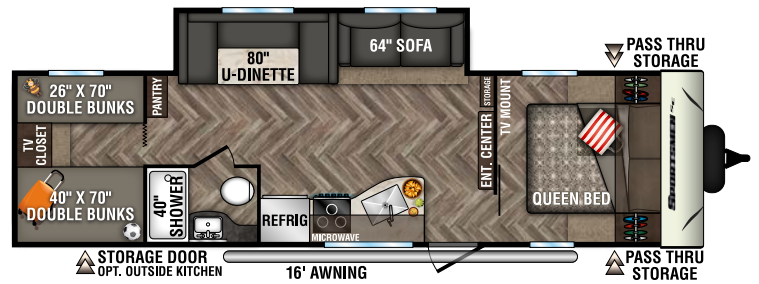
241RLSE **NEW**



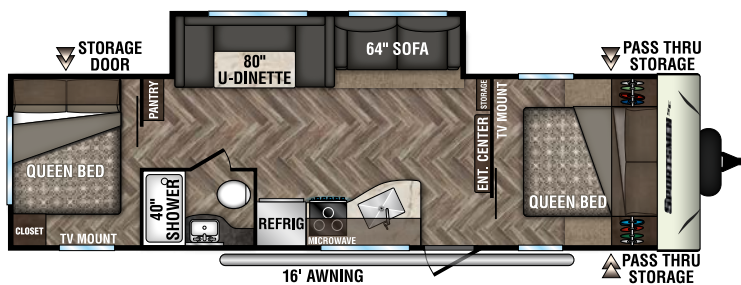
260BHSE



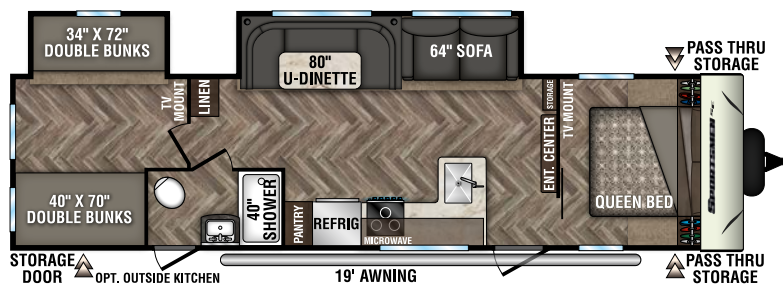
271BHSE



301BHSE **NEW**



301DBSE **NEW**



312BHSE